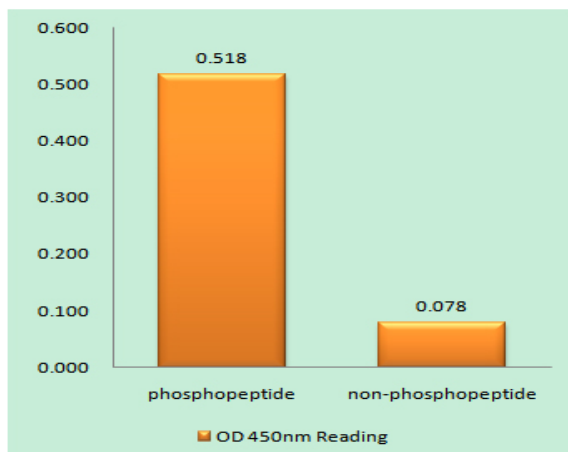


PDE4B/C/D (phospho Ser133/119/190) Polyclonal Antibody

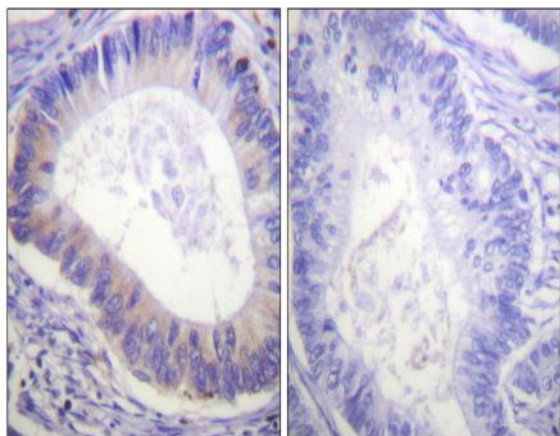
Catalog No :	YP0668
Reactivity :	Human;Mouse;Rat
Applications :	WB;IHC;IF;ELISA
Target :	PDE4B/C/D
Fields :	>>Purine metabolism;>>Metabolic pathways;>>cAMP signaling pathway;>>Parathyroid hormone synthesis, secretion and action;>>Morphine addiction
Gene Name :	PDE4B/PDE4C/PDE4D
Protein Name :	cAMP-specific 3',5'-cyclic phosphodiesterase 4D
Human Gene Id :	5144
Human Swiss Prot No :	Q07343/Q08493/Q08499
Mouse Gene Id :	110385/238871
Rat Gene Id :	24626/24627
Rat Swiss Prot No :	P14646/P14644/P14270
Immunogen :	The antiserum was produced against synthesized peptide derived from human PDE4D around the phosphorylation site of Ser190/53. AA range:156-205
Specificity :	Phospho-PDE4B/C/D (S133/119/190) Polyclonal Antibody detects endogenous levels of PDE4B/C/D protein only when phosphorylated at S133/119/190.
Formulation :	Liquid in PBS containing 50% glycerol, 0.5% BSA and 0.02% sodium azide.
Source :	Polyclonal, Rabbit,IgG
Dilution :	WB 1:500 - 1:2000. IHC 1:100 - 1:300. ELISA: 1:20000.. IF 1:50-200

Purification :	The antibody was affinity-purified from rabbit antiserum by affinity-chromatography using epitope-specific immunogen.
Concentration :	1 mg/ml
Storage Stability :	-15°C to -25°C/1 year(Do not lower than -25°C)
Observed Band :	76kD
Cell Pathway :	Purine metabolism;
Background :	This gene is a member of the type IV, cyclic AMP (cAMP)-specific, cyclic nucleotide phosphodiesterase (PDE) family. The encoded protein regulates the cellular concentrations of cyclic nucleotides and thereby play a role in signal transduction. Altered activity of this protein has been associated with schizophrenia and bipolar affective disorder. Alternative splicing and the use of alternative promoters results in multiple transcript variants encoding different isoforms. [provided by RefSeq, Jul 2014],
Function :	alternative products:Additional isoforms seem to exist,catalytic activity:Adenosine 3',5'-cyclic phosphate + H(2)O = adenosine 5'-phosphate.,enzyme regulation:Inhibited by rolipram.,function:May be involved in mediating central nervous system effects of therapeutic agents ranging from antidepressants to antiasthmatic and anti-inflammatory agents.,pathway:Purine metabolism; cAMP degradation; AMP from cAMP: step 1/1.,similarity:Belongs to the cyclic nucleotide phosphodiesterase family.,tissue specificity:Expressed in brain, heart, lung and skeletal muscle.,
Subcellular Location :	[Isoform PDE4B5]: Cytoplasm . Cell membrane .
Expression :	Expressed in brain, heart, lung and skeletal muscle (PubMed:17519386). Expressed in white blood cells (PubMed:8392015). ; [Isoform PDE4B5]: Brain-specific isoform.
Tag :	orthogonal
Sort :	1
No4 :	1
Host :	Rabbit
Modifications :	Phospho

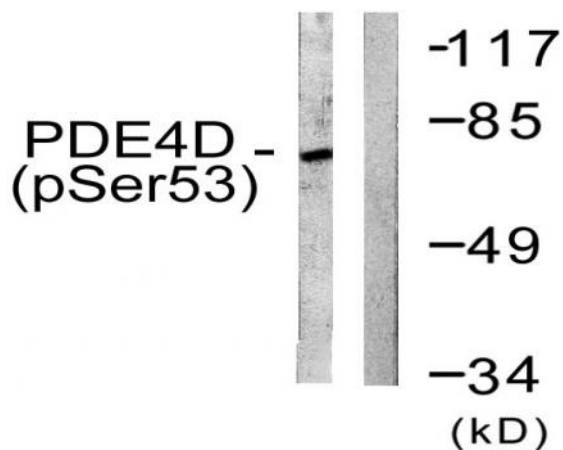
Products Images



Enzyme-Linked Immunosorbent Assay (Phospho-ELISA) for Immunogen Phosphopeptide (Phospho-left) and Non-Phosphopeptide (Phospho-right), using PDE4D (Phospho-Ser190/53) Antibody



Immunohistochemistry analysis of paraffin-embedded human colon carcinoma, using PDE4D (Phospho-Ser190/53) Antibody. The picture on the right is blocked with the phospho peptide.



Western blot analysis of lysates from K562 cells treated with H₂O₂ 100uM 30', using PDE4D (Phospho-Ser190/53) Antibody. The lane on the right is blocked with the phospho peptide.