

PAK α (phospho Thr212) Polyclonal Antibody

Catalog No :	YP0666
Reactivity :	Human;Mouse;Rat
Applications :	WB;IHC;IF;ELISA
Target :	PAK1
Fields :	>>MAPK signaling pathway;>>ErbB signaling pathway;>>Ras signaling pathway;>>cAMP signaling pathway;>>Chemokine signaling pathway;>>Axon guidance;>>Hippo signaling pathway - multiple species;>>Focal adhesion;>>C-type lectin receptor signaling pathway;>>Natural killer cell mediated cytotoxicity;>>T cell receptor signaling pathway;>>Fc gamma R-mediated phagocytosis;>>Regulation of actin cytoskeleton;>>Epithelial cell signaling in Helicobacter pylori infection;>>Pathogenic Escherichia coli infection;>>Salmonella infection;>>Human immunodeficiency virus 1 infection;>>Proteoglycans in cancer;>>Renal cell carcinoma
Gene Name :	PAK1
Protein Name :	Serine/threonine-protein kinase PAK 1
Human Gene Id :	5058
Human Swiss Prot No :	Q13153
Mouse Swiss Prot No :	O88643
Rat Gene Id :	29431
Rat Swiss Prot No :	P35465
Immunogen :	The antiserum was produced against synthesized peptide derived from human PAK1 around the phosphorylation site of Thr212. AA range:178-227
Specificity :	Phospho-PAK α (T212) Polyclonal Antibody detects endogenous levels of PAK α protein only when phosphorylated at T212.
Formulation :	Liquid in PBS containing 50% glycerol, 0.5% BSA and 0.02% sodium azide.

Source :	Polyclonal, Rabbit,IgG
Dilution :	WB 1:500 - 1:2000. IHC 1:100 - 1:300. ELISA: 1:10000.. IF 1:50-200
Purification :	The antibody was affinity-purified from rabbit antiserum by affinity-chromatography using epitope-specific immunogen.
Concentration :	1 mg/ml
Storage Stability :	-15°C to -25°C/1 year(Do not lower than -25°C)
Observed Band :	65kD
Cell Pathway :	MAPK_ERK_Growth;MAPK_G_Protein;ErbB_HER;Chemokine;Axon guidance;Focal adhesion;Natural killer cell mediated cytotoxicity;T_Cell_Receptor;Fc gamma R-mediated phagocytosis;Regulates Actin and Cytoskelet
Background :	This gene encodes a family member of serine/threonine p21-activating kinases, known as PAK proteins. These proteins are critical effectors that link RhoGTPases to cytoskeleton reorganization and nuclear signaling, and they serve as targets for the small GTP binding proteins Cdc42 and Rac. This specific family member regulates cell motility and morphology. Alternatively spliced transcript variants encoding different isoforms have been found for this gene. [provided by RefSeq, Apr 2010],
Function :	catalytic activity:ATP + a protein = ADP + a phosphoprotein.,cofactor:Magnesium.,enzyme regulation:Activated by binding small G proteins. Binding of GTP-bound CDC42 or RAC1 to the autoregulatory region releases monomers from the autoinhibited dimer, enables phosphorylation of Thr-423 and allows the kinase domain to adopt an active structure. Also activated by binding to GTP-bound CDC42, independent of the phosphorylation state of Thr-423. Phosphorylation of Thr-84 by OXSR1 inhibits this activation.,function:The activated kinase acts on a variety of targets. Likely to be the GTPase effector that links the Rho-related GTPases to the JNK MAP kinase pathway. Activated by CDC42 and RAC1. Involved in dissolution of stress fibers and reorganization of focal complexes. Involved in regulation of microtubule biogenesis through phosphorylation of TBCB. Activity is inhibited in cells undergoing apop
Subcellular Location :	Cytoplasm . Cell junction, focal adhesion . Cell projection, lamellipodium . Cell membrane . Cell projection, ruffle membrane . Cell projection, invadopodium . Nucleus, nucleoplasm . Chromosome . Cytoplasm, cytoskeleton, microtubule organizing center, centrosome . Colocalizes with RUFY3, F-actin and other core migration components in invadopodia at the cell periphery (PubMed:25766321). Recruited to the cell membrane by interaction with CDC42 and RAC1. Recruited to focal adhesions upon activation. Colocalized with CIB1 within membrane ruffles

during cell spreading upon readhesion to fibronectin. Upon DNA damage, translocates to the nucleoplasm when phosphorylated at Thr-212 where is co-recruited with MORC2 on damaged chromatin (PubMed:23260667). Localization to the centrosome does not depen

Expression : Overexpressed in gastric cancer cells and tissues (at protein level) (PubMed:25766321).

Tag : orthogonal,hot

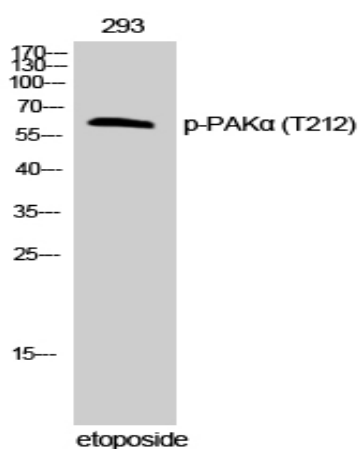
Sort : 11586

No4 : 1

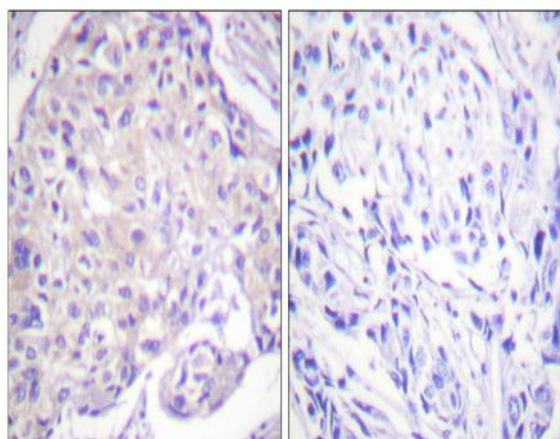
Host : Rabbit

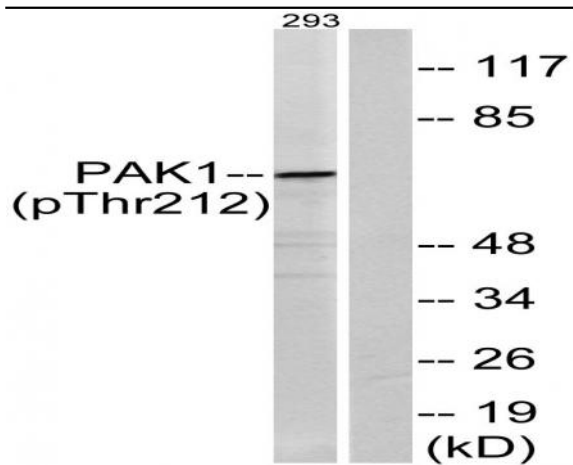
Modifications : Phospho

Products Images



Western Blot analysis of 293 cells using Phospho-PAK α (T212) Polyclonal Antibody





Western blot analysis of lysates from 293 cells treated with etoposide 25uM 1h, using PAK1 (Phospho-Thr212) Antibody. The lane on the right is blocked with the phospho peptide.