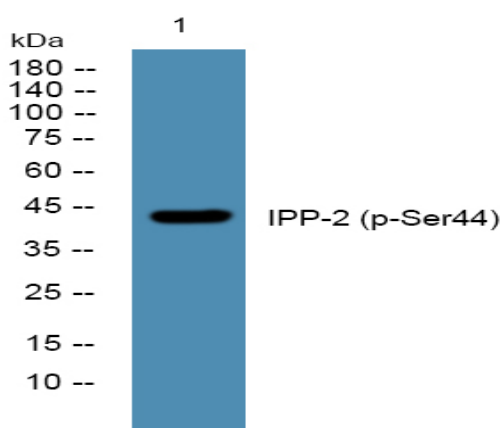


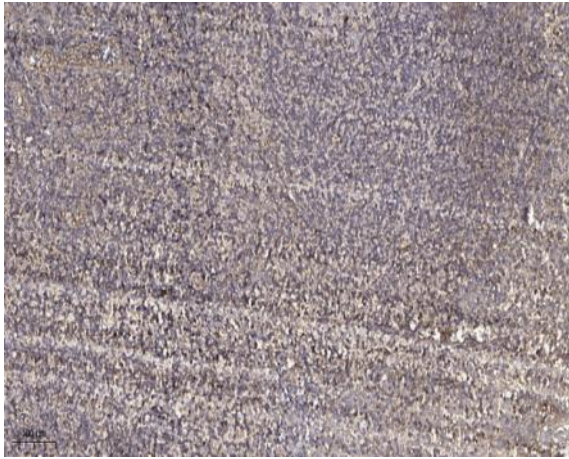
**IPP-2 (phospho Ser44) Polyclonal Antibody**

<b>Catalog No :</b>	YP0830
<b>Reactivity :</b>	Human;Mouse;Rat
<b>Applications :</b>	WB;IHC;IF;ELISA
<b>Target :</b>	IPP-2
<b>Gene Name :</b>	PPP1R2
<b>Protein Name :</b>	Protein phosphatase inhibitor 2
<b>Human Gene Id :</b>	5504
<b>Human Swiss Prot No :</b>	P41236
<b>Mouse Gene Id :</b>	66849
<b>Mouse Swiss Prot No :</b>	Q9DCL8
<b>Rat Gene Id :</b>	192361
<b>Rat Swiss Prot No :</b>	P50411
<b>Immunogen :</b>	Synthesized phospho-peptide around the phosphorylation site of human IPP-2 (phospho Ser44)
<b>Specificity :</b>	Phospho-IPP-2 (S44) Polyclonal Antibody detects endogenous levels of IPP-2 protein only when phosphorylated at S44.
<b>Formulation :</b>	Liquid in PBS containing 50% glycerol, 0.5% BSA and 0.02% sodium azide.
<b>Source :</b>	Polyclonal, Rabbit,IgG
<b>Dilution :</b>	WB 1:500 - 1:2000. IHC 1:100 - 1:300. ELISA: 1:40000.. IF 1:50-200
<b>Purification :</b>	The antibody was affinity-purified from rabbit antiserum by affinity-chromatography using epitope-specific immunogen.

<b>Concentration :</b>	1 mg/ml
<b>Storage Stability :</b>	-15°C to -25°C/1 year(Do not lower than -25°C)
<b>Observed Band :</b>	44kD
<b>Background :</b>	Protein phosphatase-1 (PP1) is one of the main eukaryotic serine/threonine phosphatases. The protein encoded by this gene binds to the catalytic subunit of PP1, strongly inhibiting its activity. Ten related pseudogenes have been found throughout the human genome. Several splice variants encoding different isoforms have been found for this gene. [provided by RefSeq, Oct 2015],
<b>Function :</b>	function:Inhibitor of protein-phosphatase 1.,PTM:Phosphorylation on Thr-73 by GSK3 activates PP1 by dissociating the PP1-PPP1R2 complex (By similarity). Phosphorylation on Ser-44 by ATM activates PP1 by dissociating the PP1-PPP1R2 complex.,similarity:Belongs to the protein phosphatase inhibitor 2 family.,subunit:Heterodimer with PP1.,
<b>Subcellular Location :</b>	protein phosphatase type 1 complex,
<b>Expression :</b>	Epithelium,Heart,Platelet,Skin,Testis,
<b>Sort :</b>	8646
<b>No4 :</b>	1
<b>Host :</b>	Rabbit
<b>Modifications :</b>	Phospho

## Products Images





Immunohistochemical analysis of paraffin-embedded human tonsil. 1, Antibody was diluted at 1:200(4° overnight). 2, Tris-EDTA,pH9.0 was used for antigen retrieval. 3,Secondary antibody was diluted at 1:200(room temperature, 30min).