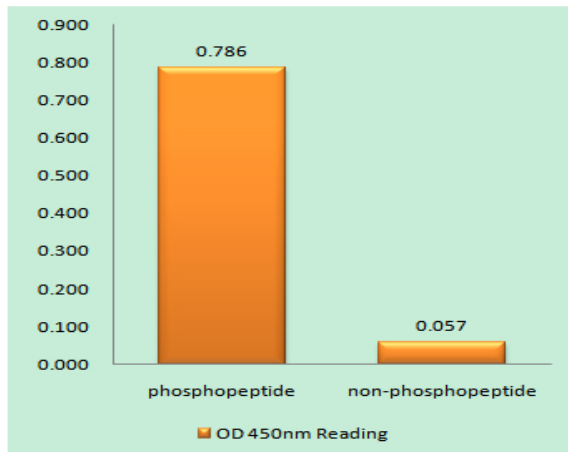


**14-3-3  $\zeta/\delta$  (phospho Thr232) Polyclonal Antibody**

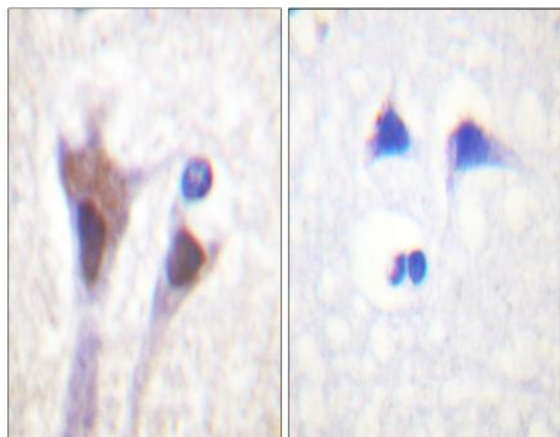
<b>Catalog No :</b>	YP0709
<b>Reactivity :</b>	Human;Mouse;Rat
<b>Applications :</b>	WB;IHC;IF;ELISA
<b>Target :</b>	14-3-3 $\zeta/\delta$
<b>Fields :</b>	>>Cell cycle;>>Oocyte meiosis;>>PI3K-Akt signaling pathway;>>Hippo signaling pathway;>>Hepatitis C;>>Hepatitis B;>>Viral carcinogenesis
<b>Gene Name :</b>	YWHAZ
<b>Protein Name :</b>	14-3-3 protein zeta/delta
<b>Human Gene Id :</b>	7534
<b>Human Swiss Prot No :</b>	P63104
<b>Mouse Gene Id :</b>	22631
<b>Mouse Swiss Prot No :</b>	P63101
<b>Rat Gene Id :</b>	25578
<b>Rat Swiss Prot No :</b>	P63102
<b>Immunogen :</b>	The antiserum was produced against synthesized peptide derived from human 14-3-3 zeta/delta around the phosphorylation site of Thr232. AA range:196-245
<b>Specificity :</b>	Phospho-14-3-3 $\zeta/\delta$ (T232) Polyclonal Antibody detects endogenous levels of 14-3-3 $\zeta/\delta$ protein only when phosphorylated at T232.
<b>Formulation :</b>	Liquid in PBS containing 50% glycerol, 0.5% BSA and 0.02% sodium azide.
<b>Source :</b>	Polyclonal, Rabbit,IgG
<b>Dilution :</b>	WB 1:500 - 1:2000. IHC 1:100 - 1:300. ELISA: 1:20000.. IF 1:50-200

<b>Purification :</b>	The antibody was affinity-purified from rabbit antiserum by affinity-chromatography using epitope-specific immunogen.
<b>Concentration :</b>	1 mg/ml
<b>Storage Stability :</b>	-15°C to -25°C/1 year(Do not lower than -25°C)
<b>Observed Band :</b>	28kD
<b>Cell Pathway :</b>	Akt_PKB;Cell_Cycle_G1S;Cell_Cycle_G2M_DNA;Oocyte meiosis;Neurotrophin;Pathogenic Escherichia coli infection;
<b>Background :</b>	This gene product belongs to the 14-3-3 family of proteins which mediate signal transduction by binding to phosphoserine-containing proteins. This highly conserved protein family is found in both plants and mammals, and this protein is 99% identical to the mouse, rat and sheep orthologs. The encoded protein interacts with IRS1 protein, suggesting a role in regulating insulin sensitivity. Several transcript variants that differ in the 5' UTR but that encode the same protein have been identified for this gene. [provided by RefSeq, Oct 2008],
<b>Function :</b>	caution:Was originally (PubMed:1577711) thought to have phospholipase A2 activity.,function:Adapter protein implicated in the regulation of a large spectrum of both general and specialized signaling pathway. Binds to a large number of partners, usually by recognition of a phosphoserine or phosphothreonine motif. Binding generally results in the modulation of the activity of the binding partner.,PTM:The delta, brain-specific form differs from the zeta form in being phosphorylated (By similarity). Phosphorylation on Ser-184 by MAPK8; promotes dissociation of BAX and translocation of BAX to mitochondria. Phosphorylation on Ser-58 by PKA; disrupts homodimerization and heterodimerization with YHAE and TP53. This phosphorylation appears to be activated by sphingosine. Phosphorylation on Thr-232; inhibits binding of RAF1.,similarity:Belongs to the 14-3-3 family.,subcellular location:Located to
<b>Subcellular Location :</b>	Cytoplasm . Melanosome . Located to stage I to stage IV melanosomes.
<b>Expression :</b>	B-cell lymphoma,Bone marrow
<b>Tag :</b>	orthogonal
<b>Sort :</b>	1483
<b>No4 :</b>	1
<b>Host :</b>	Rabbit

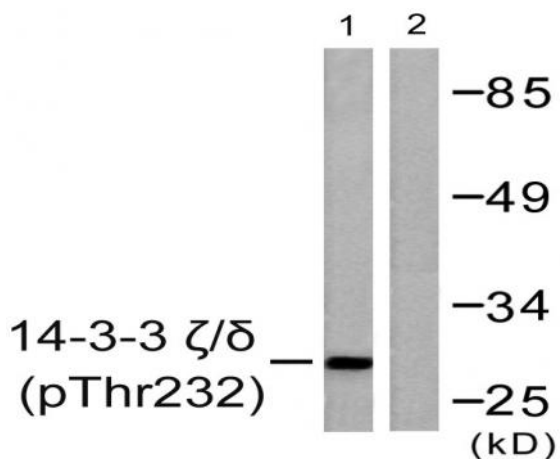
## Products Images



Enzyme-Linked Immunosorbent Assay (Phospho-ELISA) for Immunogen Phosphopeptide (Phospho-left) and Non-Phosphopeptide (Phospho-right), using 14-3-3 zeta/delta (Phospho-Thr232) Antibody



Immunohistochemistry analysis of paraffin-embedded human brain, using 14-3-3 zeta/delta (Phospho-Thr232) Antibody. The picture on the right is blocked with the phospho peptide.



Western blot analysis of lysates from Jurkat cells treated with UV 15', using 14-3-3 zeta/delta (Phospho-Thr232) Antibody. The lane on the right is blocked with the phospho peptide.