

WAVE1 (phospho Tyr125) Polyclonal Antibody

Catalog No :	YP0680
Reactivity :	Human;Mouse;Rat
Applications :	WB;IHC;IF;ELISA
Target :	WAVE1
Fields :	>>Adherens junction;>>Fc gamma R-mediated phagocytosis;>>Regulation of actin cytoskeleton;>>Bacterial invasion of epithelial cells;>>Pathogenic Escherichia coli infection;>>Shigellosis;>>Choline metabolism in cancer
Gene Name :	WASF1
Protein Name :	Wiskott-Aldrich syndrome protein family member 1
Human Gene Id :	8936
Human Swiss Prot No :	Q92558
Mouse Gene Id :	83767
Mouse Swiss Prot No :	Q8R5H6
Rat Gene Id :	294568
Rat Swiss Prot No :	Q5BJU7
Immunogen :	The antiserum was produced against synthesized peptide derived from human WAVE1 around the phosphorylation site of Tyr125. AA range:91-140
Specificity :	Phospho-WAVE1 (Y125) Polyclonal Antibody detects endogenous levels of WAVE1 protein only when phosphorylated at Y125.
Formulation :	Liquid in PBS containing 50% glycerol, 0.5% BSA and 0.02% sodium azide.
Source :	Polyclonal, Rabbit,IgG

Dilution : WB 1:500 - 1:2000. IHC 1:100 - 1:300. IF 1:200 - 1:1000. ELISA: 1:5000. Not yet tested in other applications.

Purification : The antibody was affinity-purified from rabbit antiserum by affinity-chromatography using epitope-specific immunogen.

Concentration : 1 mg/ml

Storage Stability : -15°C to -25°C/1 year(Do not lower than -25°C)

Observed Band : 70kD

Cell Pathway : Adherens_Junction;Fc gamma R-mediated phagocytosis;Regulates Actin and Cytoskeleton;

Background : The protein encoded by this gene, a member of the Wiskott-Aldrich syndrome protein (WASP)-family, plays a critical role downstream of Rac, a Rho-family small GTPase, in regulating the actin cytoskeleton required for membrane ruffling. It has been shown to associate with an actin nucleation core Arp2/3 complex while enhancing actin polymerization in vitro. Wiskott-Aldrich syndrome is a disease of the immune system, likely due to defects in regulation of actin cytoskeleton. Multiple alternatively spliced transcript variants encoding the same protein have been found for this gene. [provided by RefSeq, Jul 2008],

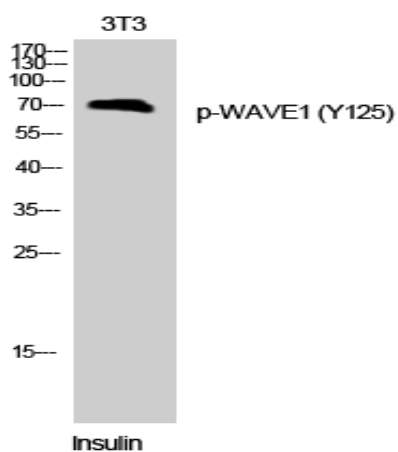
Function : domain: Binds the Arp2/3 complex through the C-terminal region and actin through verprolin homology (VPH) domain.,function: Downstream effector molecules involved in the transmission of signals from tyrosine kinase receptors and small GTPases to the actin cytoskeleton.,similarity: Belongs to the SCAR/WAVE family.,similarity: Contains 1 WH2 domain.,subcellular location: Dot-like pattern in the cytoplasm. Concentrated in Rac-regulated membrane-ruffling areas.,subunit: Component of the WAVE1 complex composed of ABI2, CYFIP2, C3orf10/HSPC300, NCKAP1 and WASF1/WAVE1. CYFIP2 binds to activated RAC1 which causes the complex to dissociate, releasing activated WASF1. The complex can also be activated by NCK1 (By similarity). Binds actin and the Arp2/3 complex. Interacts with BAIAP2.,tissue specificity: Highly expressed in brain. Lowly expressed in testis, ovary, colon, kidney, pancreas, thymus, small in

Subcellular Location : Cytoplasm, cytoskeleton . Cell junction, synapse . Cell junction, focal adhesion . Dot-like pattern in the cytoplasm. Concentrated in Rac-regulated membrane-ruffling areas (PubMed:9889097). Partial translocation to focal adhesion sites might be mediated by interaction with SORBS2 (PubMed:18559503). In neurons, colocalizes with activated NTRK2 after BDNF addition in endocytic sites through the association with TMEM108 (By similarity) .

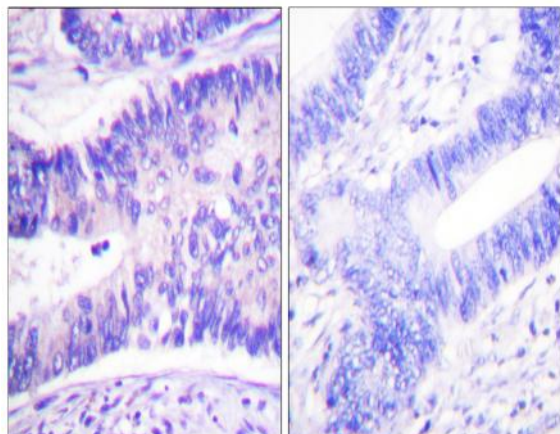
Expression : Highly expressed in brain. Lowly expressed in testis, ovary, colon, kidney, pancreas, thymus, small intestine and peripheral blood.

Tag :	<u>orthogonal</u>
Sort :	<u>24245</u>
No4 :	<u>1</u>
Host :	<u>Rabbit</u>
Modifications :	<u>Phospho</u>

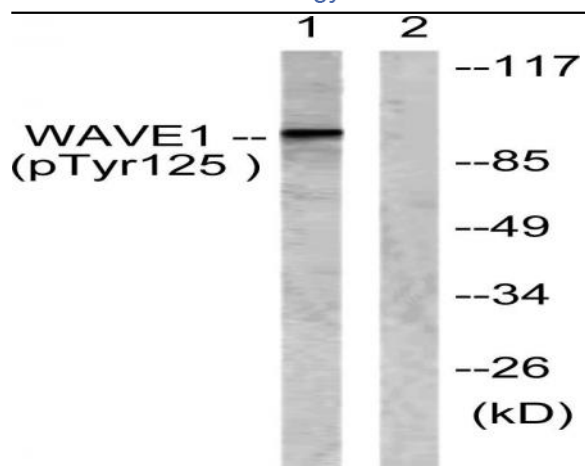
Products Images



Western Blot analysis of 3T3 cells using Phospho-WAVE1 (Y125) Polyclonal Antibody



Immunohistochemistry analysis of paraffin-embedded human colon carcinoma, using WAVE1 (Phospho-Tyr125) Antibody. The picture on the right is blocked with the phospho peptide.



Western blot analysis of lysates from NIH/3T3 cells treated with Insulin 0.01U/ml 15', using WAVE1 (Phospho-Tyr125) Antibody. The lane on the right is blocked with the phospho peptide.