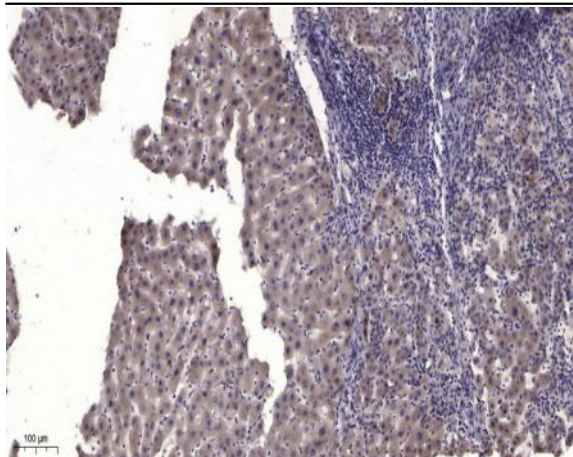


MuSK (phospho Tyr755) Polyclonal Antibody

Catalog No :	YP0510
Reactivity :	Human;Mouse;Rat
Applications :	WB;ELISA;IHC
Target :	MuSK
Gene Name :	MUSK
Protein Name :	Muscle, skeletal receptor tyrosine-protein kinase
Human Gene Id :	4593
Human Swiss Prot No :	O15146
Mouse Gene Id :	18198
Mouse Swiss Prot No :	Q61006
Rat Gene Id :	81725
Rat Swiss Prot No :	Q62838
Immunogen :	Synthesized phospho-peptide around the phosphorylation site of human MuSK (phospho Tyr755)
Specificity :	Phospho-MuSK (Y755) Polyclonal Antibody detects endogenous levels of MuSK protein only when phosphorylated at Y755.
Formulation :	Liquid in PBS containing 50% glycerol, 0.5% BSA and 0.02% sodium azide.
Source :	Polyclonal, Rabbit,IgG
Dilution :	WB 1:500-2000;IHC 1:50-300; ELISA 2000-20000
Purification :	The antibody was affinity-purified from rabbit antiserum by affinity-chromatography using epitope-specific immunogen.

Concentration :	1 mg/ml
Storage Stability :	-15°C to -25°C/1 year(Do not lower than -25°C)
Observed Band :	97kD
Background :	This gene encodes a muscle-specific tyrosine kinase receptor. The encoded protein may play a role in clustering of the acetylcholine receptor in the postsynaptic neuromuscular junction. Mutations in this gene have been associated with congenital myasthenic syndrome. Alternatively spliced transcript variants have been described.[provided by RefSeq, Oct 2009],
Function :	catalytic activity:ATP + a [protein]-L-tyrosine = ADP + a [protein]-L-tyrosine phosphate.,disease:Defects in MUSK is a cause of autosomal recessive congenital myasthenic syndrome (CMS) [MIM:608931]. Congenital myasthenic syndromes are inherited disorders of neuromuscular transmission that stem from mutations in presynaptic, synaptic, or postsynaptic proteins. MUSK mutations lead to decreased agrin-dependent AChR aggregation, a critical step in the formation of the neuromuscular junction.,function:Receptor tyrosine kinase that is a key mediator of agrin's action and is involved in neuromuscular junction (NMJ) organization.,online information:MuSK entry,similarity:Belongs to the protein kinase superfamily. Tyr protein kinase family.,similarity:Contains 1 FZ (frizzled) domain.,similarity:Contains 1 protein kinase domain.,similarity:Contains 3 Ig-like C2-type (immunoglobulin-like) domains.,s
Subcellular Location :	Cell junction, synapse, postsynaptic cell membrane ; Single-pass type I membrane protein . Colocalizes with acetylcholine receptors (AChR) to the postsynaptic cell membrane of the neuromuscular junction. .
Sort :	10404
No4 :	1
Host :	Rabbit
Modifications :	Phospho

Products Images



Immunohistochemical analysis of paraffin-embedded human liver cancer. 1, Antibody was diluted at 1:200(4° overnight). 2, Tris-EDTA,pH9.0 was used for antigen retrieval. 3,Secondary antibody was diluted at 1:200(room temperature, 45min).