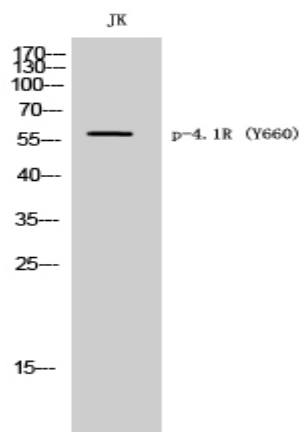


4.1R (phospho Tyr660) Polyclonal Antibody

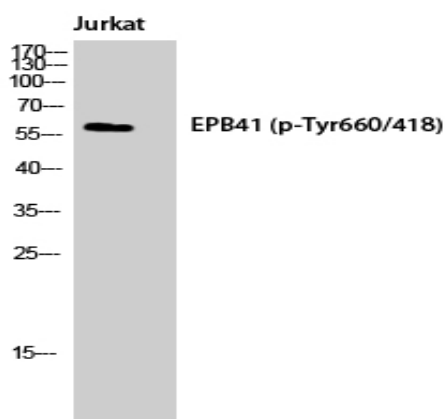
Catalog No :	YP0468
Reactivity :	Human;Mouse
Applications :	WB;IHC;IF;ELISA
Target :	4.1R
Gene Name :	EPB41
Protein Name :	Protein 4.1
Human Gene Id :	2035
Human Swiss Prot No :	P11171
Mouse Gene Id :	269587
Mouse Swiss Prot No :	P48193
Immunogen :	The antiserum was produced against synthesized peptide derived from human EPB41 around the phosphorylation site of Tyr660/418. AA range:626-675
Specificity :	Phospho-4.1R (Y660) Polyclonal Antibody detects endogenous levels of 4.1R protein only when phosphorylated at Y660.
Formulation :	Liquid in PBS containing 50% glycerol, 0.5% BSA and 0.02% sodium azide.
Source :	Polyclonal, Rabbit,IgG
Dilution :	WB 1:500 - 1:2000. IHC 1:100 - 1:300. ELISA: 1:5000.. IF 1:50-200
Purification :	The antibody was affinity-purified from rabbit antiserum by affinity-chromatography using epitope-specific immunogen.
Concentration :	1 mg/ml
Storage Stability :	-15°C to -25°C/1 year(Do not lower than -25°C)

Observed Band :	60kD
Cell Pathway :	Tight junction;
Background :	<p>The protein encoded by this gene, together with spectrin and actin, constitute the red cell membrane cytoskeletal network. This complex plays a critical role in erythrocyte shape and deformability. Mutations in this gene are associated with type 1 elliptocytosis (EL1). Alternatively spliced transcript variants encoding different isoforms have been described for this gene.[provided by RefSeq, Oct 2009],</p>
Function :	<p>disease:Defects in EPB41 are a cause of hereditary pyropoikilocytosis (HPP) [MIM:266140]. HPP is an autosomal recessive hematologic disorder characterized by hemolytic anemia, microspherocytosis, poikilocytosis, and an unusual thermal sensitivity of red cells.,disease:Defects in EPB41 are the cause of elliptocytosis type 1 (EL1) [MIM:611804]. EL1 is a Rhesus-linked form of hereditary elliptocytosis, a genetically heterogeneous, autosomal dominant, hematologic disorder. It is characterized by variable hemolytic anemia and elliptical or oval red cell shape.,function:Protein 4.1 is a major structural element of the erythrocyte membrane skeleton. It plays a key role in regulating membrane physical properties of mechanical stability and deformability by stabilizing spectrin-actin interaction. Recruits DLG1 to membranes.,PTM:O-glycosylated; contains N-acetylglucosamine side chains in the C-ter</p>
Subcellular Location :	Cytoplasm, cytoskeleton . Cytoplasm, cell cortex . Nucleus .
Expression :	Brain,PCR rescued clones,Reticulocyte,Spleen,
Tag :	orthogonal
Sort :	1511
No4 :	1
Host :	Rabbit
Modifications :	Phospho

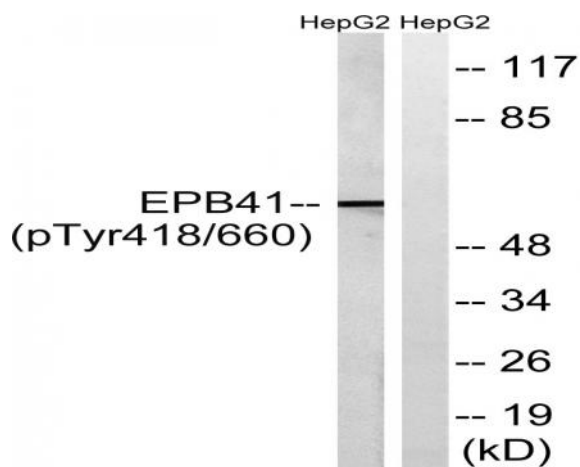
Products Images



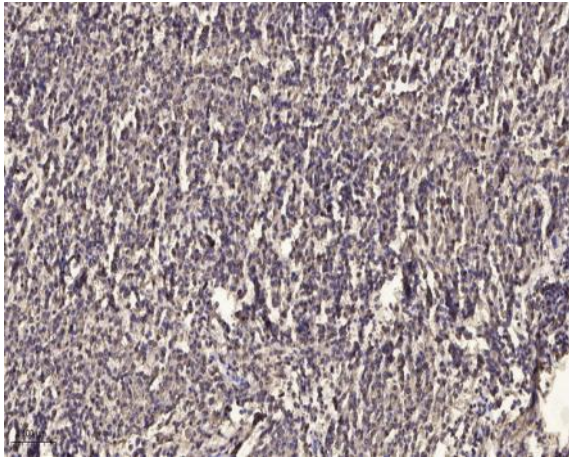
Western Blot analysis of JK cells using Phospho-4.1R (Y660) Polyclonal Antibody



Western Blot analysis of Jurkat cells using Phospho-4.1R (Y660) Polyclonal Antibody



Western blot analysis of lysates from HepG2 cells treated with PMA 125ng/ml 30', using EPB41 (Phospho-Tyr660/418) Antibody. The lane on the right is blocked with the phospho peptide.



Immunohistochemical analysis of paraffin-embedded human meningioma. 1, Antibody was diluted at 1:200(4 ° overnight). 2, Tris-EDTA,pH9.0 was used for antigen retrieval. 3,Secondary antibody was diluted at 1:200(room temperature, 45min).