

**Cdk2/Cdc2 (phospho Thr160) Polyclonal Antibody**

<b>Catalog No :</b>	YP0592
<b>Reactivity :</b>	Human;Mouse;Rat
<b>Applications :</b>	WB;IHC;IF;ELISA
<b>Target :</b>	Cdk2/Cdc2
<b>Fields :</b>	>>FoxO signaling pathway;>>Cell cycle;>>Oocyte meiosis;>>p53 signaling pathway;>>PI3K-Akt signaling pathway;>>Cellular senescence;>>Progesterone-mediated oocyte maturation;>>Cushing syndrome;>>Hepatitis C;>>Hepatitis B;>>Measles;>>Human papillomavirus infection;>>Human T-cell leukemia virus 1 infection;>>Epstein-Barr virus infection;>>Pathways in cancer;>>Viral carcinogenesis;>>Prostate cancer;>>Small cell lung cancer;>>Gastric cancer
<b>Gene Name :</b>	CDK2
<b>Protein Name :</b>	Cyclin-dependent kinase 2
<b>Human Gene Id :</b>	1017
<b>Human Swiss Prot No :</b>	P24941
<b>Mouse Gene Id :</b>	12566
<b>Mouse Swiss Prot No :</b>	P97377
<b>Rat Swiss Prot No :</b>	Q63699
<b>Immunogen :</b>	Synthesized phospho-peptide around the phosphorylation site of human Cdk2/Cdc2 (phospho Thr160)
<b>Specificity :</b>	Phospho-Cdk2/Cdc2 (T160) Polyclonal Antibody detects endogenous levels of Cdk2/Cdc2 protein only when phosphorylated at T160.
<b>Formulation :</b>	Liquid in PBS containing 50% glycerol, 0.5% BSA and 0.02% sodium azide.
<b>Source :</b>	Polyclonal, Rabbit,IgG

**Dilution :** WB 1:500 - 1:2000. IHC 1:100 - 1:300. ELISA: 1:20000.. IF 1:50-200

**Purification :** The antibody was affinity-purified from rabbit antiserum by affinity-chromatography using epitope-specific immunogen.

**Concentration :** 1 mg/ml

**Storage Stability :** -15°C to -25°C/1 year(Do not lower than -25°C)

**Observed Band :** 34kD

**Cell Pathway :** Cell\_Cycle\_G1S;Cell\_Cycle\_G2M\_DNA;Oocyte meiosis;p53;Progesterone-mediated oocyte maturation;Pathways in cancer;Prostate cancer;Small cell lung cancer;

**Background :** cyclin dependent kinase 2(CDK2) Homo sapiens This gene encodes a member of a family of serine/threonine protein kinases that participate in cell cycle regulation. The encoded protein is the catalytic subunit of the cyclin-dependent protein kinase complex, which regulates progression through the cell cycle. Activity of this protein is especially critical during the G1 to S phase transition. This protein associates with and regulated by other subunits of the complex including cyclin A or E, CDK inhibitor p21Cip1 (CDKN1A), and p27Kip1 (CDKN1B). Alternative splicing results in multiple transcript variants. [provided by RefSeq, Mar 2014],

**Function :** catalytic activity:ATP + a protein = ADP + a phosphoprotein.,enzyme regulation:Phosphorylation at Thr-14 or Tyr-15 inactivates the enzyme, while phosphorylation at Thr-160 activates it.,function:Involved in the control of the cell cycle. Interacts with cyclins A, B1, B3, D, or E. Activity of CDK2 is maximal during S phase and G2.,similarity:Belongs to the protein kinase superfamily.,similarity:Belongs to the protein kinase superfamily. CMGC Ser/Thr protein kinase family. CDC2/CDKX subfamily.,similarity:Contains 1 protein kinase domain.,subunit:Found in a complex with CABLES1, CCNA1 and CCNE1. Interacts with CABLES1 (By similarity). Interacts with UHRF2. Part of a complex consisting of UHRF2, CDK2 and CCNE1. Interacts with the Speedy/Ringo proteins SPDYA and SPDYC. Found in a complex with both SPDYA and CDKN1B/KIP1.,

**Subcellular Location :** Cytoplasm, cytoskeleton, microtubule organizing center, centrosome. Nucleus, Cajal body. Cytoplasm. Endosome. Localized at the centrosomes in late G2 phase after separation of the centrosomes but before the start of prophase. Nuclear-cytoplasmic trafficking is mediated during the inhibition by 1,25-(OH)(2)D(3).

**Expression :** Epithelium,Lung,Placenta,

orthogonal

---

**Sagt::** 3787

---

**No4 :** 1

---

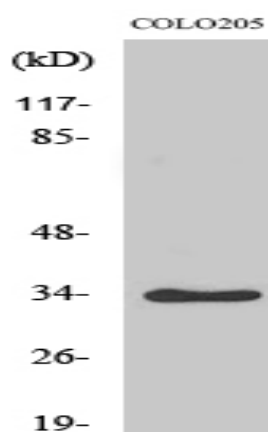
**Host :** Rabbit

---

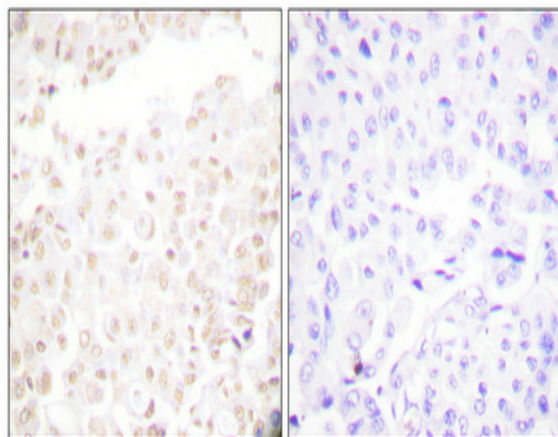
**Modifications :** Phospho

---

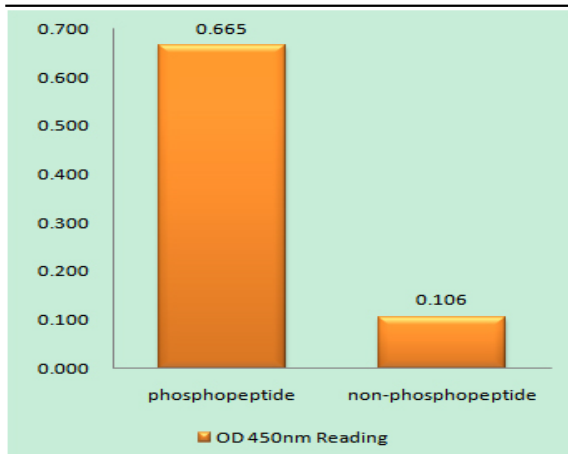
## Products Images



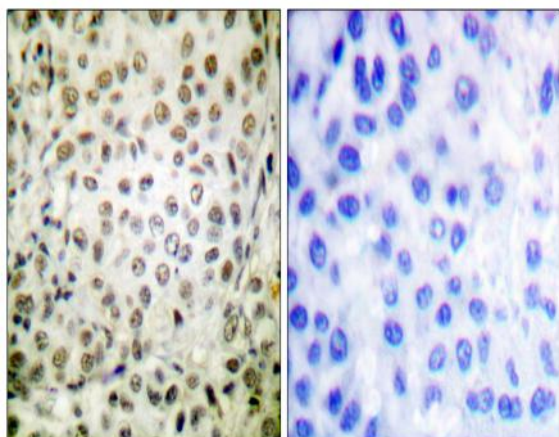
Western Blot analysis of various cells using Phospho-Cdk2/Cdc2 (T160) Polyclonal Antibody diluted at 1:500



Immunohistochemical analysis of paraffin-embedded Human brain. Antibody was diluted at 1:100(4° overnight). High-pressure and temperature Tris-EDTA,pH8.0 was used for antigen retrieval. Negative contrl (right) obtaned from antibody was pre-absorbed by immunogen peptide.



Enzyme-Linked Immunosorbent Assay (Phospho-ELISA) for Immunogen Phosphopeptide (Phospho-left) and Non-Phosphopeptide (Phospho-right), using CDK2/CDC2 (Phospho-Thr160) Antibody



Immunohistochemistry analysis of paraffin-embedded human breast cancer, using CDK2/CDC2 (Phospho-Thr160) Antibody. The picture on the right is blocked with the CDK2/CDC2 (Phospho-Thr160) peptide.