

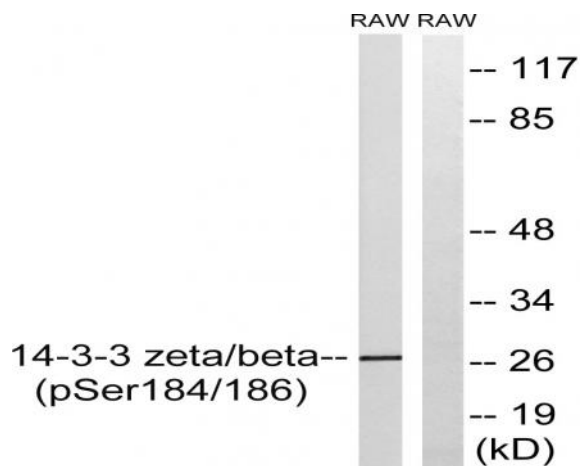
14-3-3 β/ζ (phospho Ser184/186) Polyclonal Antibody

| | |
|------------------------------|---|
| Catalog No : | YP0402 |
| Reactivity : | Human;Mouse;Rat |
| Applications : | WB;ELISA |
| Target : | 14-3-3 β/ζ |
| Fields : | >>Cell cycle;>>Oocyte meiosis;>>PI3K-Akt signaling pathway;>>Hippo signaling pathway;>>Hepatitis C;>>Hepatitis B;>>Viral carcinogenesis |
| Gene Name : | YWHAB/YWHAZ |
| Protein Name : | 14-3-3 protein beta/alpha/14-3-3 protein zeta/delta |
| Human Gene Id : | 7534/7529 |
| Human Swiss Prot No : | P63104/P31946 |
| Mouse Gene Id : | 22631/54401 |
| Rat Gene Id : | 25578/56011 |
| Rat Swiss Prot No : | P63102/P35213 |
| Immunogen : | The antiserum was produced against synthesized peptide derived from human 14-3-3 beta/zeta around the phosphorylation site of Ser184/186. AA range:151-200 |
| Specificity : | Phospho-14-3-3 β/ζ (S184/186) Polyclonal Antibody detects endogenous levels of 14-3-3 β/ζ protein only when phosphorylated at S184/186. |
| Formulation : | Liquid in PBS containing 50% glycerol, 0.5% BSA and 0.02% sodium azide. |
| Source : | Polyclonal, Rabbit,IgG |
| Dilution : | WB 1:500 - 1:2000. ELISA: 1:5000. Not yet tested in other applications. |

| | |
|-------------------------------|---|
| Purification : | The antibody was affinity-purified from rabbit antiserum by affinity-chromatography using epitope-specific immunogen. |
| Concentration : | 1 mg/ml |
| Storage Stability : | -15°C to -25°C/1 year(Do not lower than -25°C) |
| Observed Band : | 28kD |
| Cell Pathway : | Cell_Cycle_G1S;Cell_Cycle_G2M_DNA;Oocyte meiosis;Neurotrophin;Pathogenic Escherichia coli infection; |
| Background : | This gene product belongs to the 14-3-3 family of proteins which mediate signal transduction by binding to phosphoserine-containing proteins. This highly conserved protein family is found in both plants and mammals, and this protein is 99% identical to the mouse, rat and sheep orthologs. The encoded protein interacts with IRS1 protein, suggesting a role in regulating insulin sensitivity. Several transcript variants that differ in the 5' UTR but that encode the same protein have been identified for this gene. [provided by RefSeq, Oct 2008], |
| Function : | caution:Was originally (PubMed:1577711) thought to have phospholipase A2 activity.,function:Adapter protein implicated in the regulation of a large spectrum of both general and specialized signaling pathway. Binds to a large number of partners, usually by recognition of a phosphoserine or phosphothreonine motif. Binding generally results in the modulation of the activity of the binding partner.,PTM:The delta, brain-specific form differs from the zeta form in being phosphorylated (By similarity). Phosphorylation on Ser-184 by MAPK8; promotes dissociation of BAX and translocation of BAX to mitochondria. Phosphorylation on Ser-58 by PKA; disrupts homodimerization and heterodimerization with YHAE and TP53. This phosphorylation appears to be activated by sphingosine. Phosphorylation on Thr-232; inhibits binding of RAF1.,similarity:Belongs to the 14-3-3 family.,subcellular location:Located to |
| Subcellular Location : | Cytoplasm . Melanosome . Located to stage I to stage IV melanosomes. |
| Expression : | B-cell lymphoma,Bone marrow |
| Tag : | orthogonal |
| Sort : | 1475 |
| No4 : | 1 |
| Host : | Rabbit |

Modifications : Phospho

Products Images



Western blot analysis of lysates from RAW264.7 cells treated with UV 15', using 14-3-3 beta/zeta (Phospho-Ser184/186) Antibody. The lane on the right is blocked with the phospho peptide.