

**RGS16 (phospho Tyr168) Polyclonal Antibody**

<b>Catalog No :</b>	YP0397
<b>Reactivity :</b>	Human;Mouse;Rat;Monkey
<b>Applications :</b>	WB;ELISA;IHC
<b>Target :</b>	RGS16
<b>Gene Name :</b>	RGS16
<b>Protein Name :</b>	Regulator of G-protein signaling 16
<b>Human Gene Id :</b>	6004
<b>Human Swiss Prot No :</b>	O15492
<b>Mouse Gene Id :</b>	19734
<b>Mouse Swiss Prot No :</b>	P97428
<b>Rat Swiss Prot No :</b>	P56700
<b>Immunogen :</b>	The antiserum was produced against synthesized peptide derived from human RGS16 around the phosphorylation site of Tyr168. AA range:141-190
<b>Specificity :</b>	Phospho-RGS16 (Y168) Polyclonal Antibody detects endogenous levels of RGS16 protein only when phosphorylated at Y168.
<b>Formulation :</b>	Liquid in PBS containing 50% glycerol, 0.5% BSA and 0.02% sodium azide.
<b>Source :</b>	Polyclonal, Rabbit,IgG
<b>Dilution :</b>	WB 1:500-2000;IHC 1:50-300; ELISA 2000-20000
<b>Purification :</b>	The antibody was affinity-purified from rabbit antiserum by affinity-chromatography using epitope-specific immunogen.
<b>Concentration :</b>	1 mg/ml

**Storage Stability :** -15°C to -25°C/1 year (Do not lower than -25°C)

**Observed Band :** 30kD

**Background :** The protein encoded by this gene belongs to the 'regulator of G protein signaling' family. It inhibits signal transduction by increasing the GTPase activity of G protein alpha subunits. It also may play a role in regulating the kinetics of signaling in the phototransduction cascade. [provided by RefSeq, Jul 2008],

**Function :** function: Inhibits signal transduction by increasing the GTPase activity of G protein alpha subunits thereby driving them into their inactive GDP-bound form. Binds to G(i)-alpha and G(o)-alpha, but not to G(s)-alpha. May play a role in regulating the kinetics of signaling in the phototransduction cascade., PTM: Palmitoylated on Cys-2 and/or Cys-12., PTM: Phosphorylation on Tyr-168 upon EGFR stimulation. Enhanced GTPase accelerating (GAP) activity on G(i)-alpha., similarity: Contains 1 RGS domain., tissue specificity: Abundantly expressed in retina with lower levels of expression in most other tissues.,

**Subcellular Location :** Membrane ; Lipid-anchor .

**Expression :**

Abundantly expressed in retina with lower levels of expression in most other tissues.

**Tag :** orthogonal

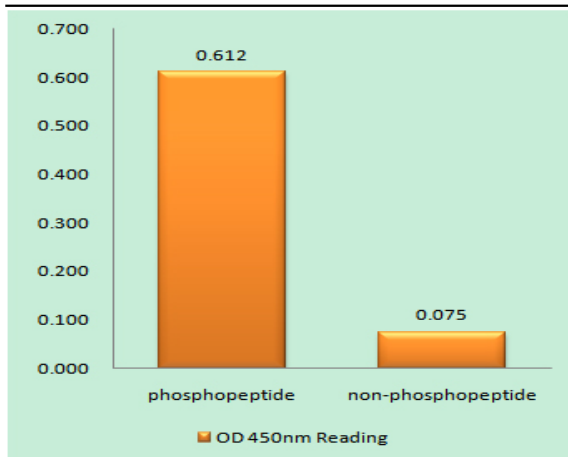
**Sort :** 14433

**No4 :** 1

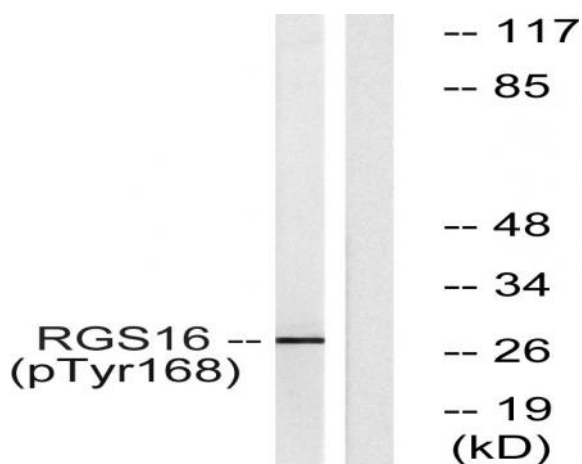
**Host :** Rabbit

**Modifications :** Phospho

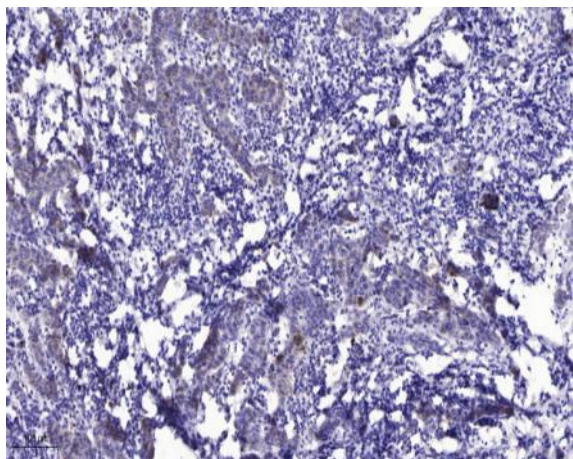
## Products Images



Enzyme-Linked Immunosorbent Assay (Phospho-ELISA) for Immunogen Phosphopeptide (Phospho-left) and Non-Phosphopeptide (Phospho-right), using RGS16 (Phospho-Tyr168) Antibody



Western blot analysis of lysates from COS7 cells treated with heat shock, using RGS16 (Phospho-Tyr168) Antibody. The lane on the right is blocked with the phospho peptide.



Immunohistochemical analysis of paraffin-embedded human Breast cancer. 1, Antibody was diluted at 1:200(4° overnight). 2, Tris-EDTA,pH9.0 was used for antigen retrieval. 3,Secondary antibody was diluted at 1:200(room temperature, 45min).