

**Myf-5 (phospho Ser49) Polyclonal Antibody**

<b>Catalog No :</b>	YP0395
<b>Reactivity :</b>	Human;Mouse
<b>Applications :</b>	WB;IHC;IF;ELISA
<b>Target :</b>	Myf-5
<b>Fields :</b>	>>Signaling pathways regulating pluripotency of stem cells
<b>Gene Name :</b>	MYF5
<b>Protein Name :</b>	Myogenic factor 5
<b>Human Gene Id :</b>	4617
<b>Human Swiss Prot No :</b>	P13349
<b>Mouse Gene Id :</b>	17877
<b>Mouse Swiss Prot No :</b>	P24699
<b>Immunogen :</b>	The antiserum was produced against synthesized peptide derived from human Myogenic Factor 5 around the phosphorylation site of Ser49. AA range:21-70
<b>Specificity :</b>	Phospho-Myf-5 (S49) Polyclonal Antibody detects endogenous levels of Myf-5 protein only when phosphorylated at S49.
<b>Formulation :</b>	Liquid in PBS containing 50% glycerol, 0.5% BSA and 0.02% sodium azide.
<b>Source :</b>	Polyclonal, Rabbit,IgG
<b>Dilution :</b>	WB 1:500 - 1:2000. IHC 1:100 - 1:300. ELISA: 1:10000.. IF 1:50-200
<b>Purification :</b>	The antibody was affinity-purified from rabbit antiserum by affinity-chromatography using epitope-specific immunogen.
<b>Concentration :</b>	1 mg/ml

**Storage Stability :** -15°C to -25°C/1 year(Do not lower than -25°C)

**Observed Band :** 38kD

**Background :** function:Involved in muscle differentiation (myogenic factor). Induces fibroblasts to differentiate into myoblasts. Probable sequence specific DNA-binding protein.,similarity:Contains 1 basic helix-loop-helix (bHLH) domain.,subunit:Efficient DNA binding requires dimerization with another bHLH protein.,

**Function :** function:Involved in muscle differentiation (myogenic factor). Induces fibroblasts to differentiate into myoblasts. Probable sequence specific DNA-binding protein.,similarity:Contains 1 basic helix-loop-helix (bHLH) domain.,subunit:Efficient DNA binding requires dimerization with another bHLH protein.,

**Subcellular Location :** Nucleus .

**Expression :** Skeletal muscle,

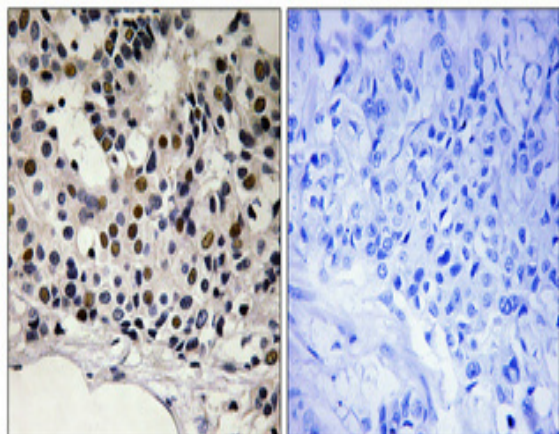
**Sort :** 10454

**No4 :** 1

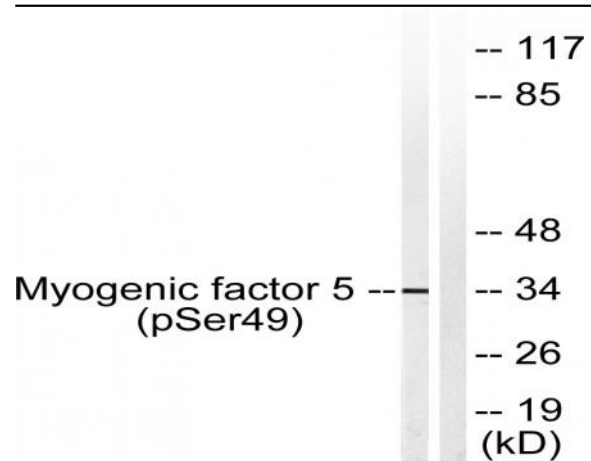
**Host :** Rabbit

**Modifications :** Phospho

## Products Images



Immunohistochemical analysis of paraffin-embedded Human breast cancer. Antibody was diluted at 1:100(4° overnight). High-pressure and temperature Tris-EDTA,pH8.0 was used for antigen retrieval. Negative contrl (right) obtained from antibody was pre-absorbed by immunogen peptide.



Western blot analysis of lysates from HeLa cells, using Myogenic Factor 5 (Phospho-Ser49) Antibody. The lane on the right is blocked with the phospho peptide.