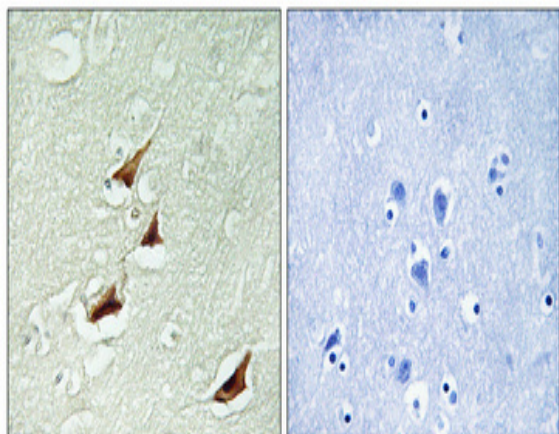


Pdcd-4 (phospho Ser67) Polyclonal Antibody

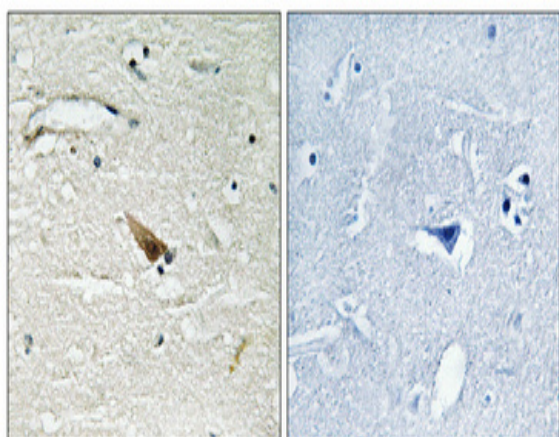
Catalog No :	YP0387
Reactivity :	Human;Mouse;Rat;Monkey
Applications :	WB;IHC;IF;ELISA
Target :	PDCD4
Fields :	>>Proteoglycans in cancer;>>MicroRNAs in cancer
Gene Name :	PDCD4
Protein Name :	Programmed cell death protein 4
Human Gene Id :	27250
Human Swiss Prot No :	Q53EL6
Mouse Gene Id :	18569
Mouse Swiss Prot No :	Q61823
Rat Gene Id :	64031
Rat Swiss Prot No :	Q9JID1
Immunogen :	The antiserum was produced against synthesized peptide derived from human PDCD4 around the phosphorylation site of Ser67. AA range:33-82
Specificity :	Phospho-Pdcd-4 (S67) Polyclonal Antibody detects endogenous levels of Pdcd-4 protein only when phosphorylated at S67.
Formulation :	Liquid in PBS containing 50% glycerol, 0.5% BSA and 0.02% sodium azide.
Source :	Polyclonal, Rabbit,IgG
Dilution :	WB 1:500 - 1:2000. IHC 1:100 - 1:300. ELISA: 1:10000.. IF 1:50-200

Purification :	The antibody was affinity-purified from rabbit antiserum by affinity-chromatography using epitope-specific immunogen.
Concentration :	1 mg/ml
Storage Stability :	-15°C to -25°C/1 year(Do not lower than -25°C)
Observed Band :	56kD
Background :	This gene is a tumor suppressor and encodes a protein that binds to the eukaryotic translation initiation factor 4A1 and inhibits its function by preventing RNA binding. Alternative splicing results in multiple transcript variants. [provided by RefSeq, Dec 2010],
Function :	caution:The sequence shown here is derived from an Ensembl automatic analysis pipeline and should be considered as preliminary data.,disease:Loss of expression correlated with tumor progression of lung and colon carcinoma.,domain:Binds EIF4A1 via the MA3 domains.,function:Tumor suppressor. Inhibits tumor promoter-induced neoplastic transformation. Down-regulates the expression of MAP4K1, thus inhibiting events important in driving invasion, namely, MAPK85 activation and consequent JUN-dependent transcription. May play a role in apoptosis. Inhibits the helicase activity of EIF4A and cap-dependent translation. Binds RNA.,induction:IL2 stimulation inhibits expression, while IL12 increases expression.,sequence caution:Contaminating sequence. Potential poly-A sequence.,similarity:Belongs to the PDCD4 family.,similarity:Contains 2 MI domains.,subcellular location:Shuttles between the nucleus a
Subcellular Location :	Nucleus . Cytoplasm . Shuttles between the nucleus and cytoplasm (By similarity). Predominantly nuclear under normal growth conditions, and when phosphorylated at Ser-457 (PubMed:16357133). .
Expression :	Up-regulated in proliferative cells. Highly expressed in epithelial cells of the mammary gland. Reduced expression in lung cancer and colon carcinoma.
Sort :	11735
No4 :	1
Host :	Rabbit
Modifications :	Phospho

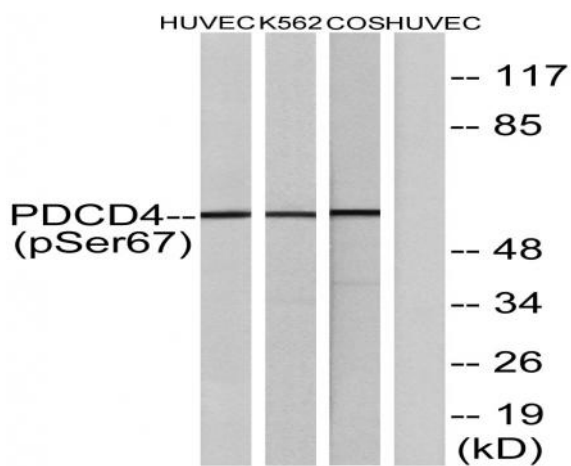
Products Images



Immunohistochemical analysis of paraffin-embedded Human brain. Antibody was diluted at 1:100(4° overnight). High-pressure and temperature Tris-EDTA,pH8.0 was used for antigen retrieval. Negative contrl (right) obtaned from antibody was pre-absorbed by immunogen peptide.



Immunohistochemical analysis of paraffin-embedded Human brain. Antibody was diluted at 1:100(4° overnight). High-pressure and temperature Tris-EDTA,pH8.0 was used for antigen retrieval. Negative contrl (right) obtaned from antibody was pre-absorbed by immunogen peptide.



Western blot analysis of lysates from HUVEC cells, K562 cells and COS-7 cells, using PDCD4 (Phospho-Ser67) Antibody. The lane on the right is blocked with the phospho peptide.