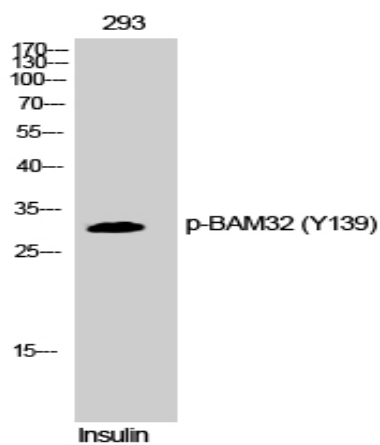


BAM32 (phospho Tyr139) Polyclonal Antibody

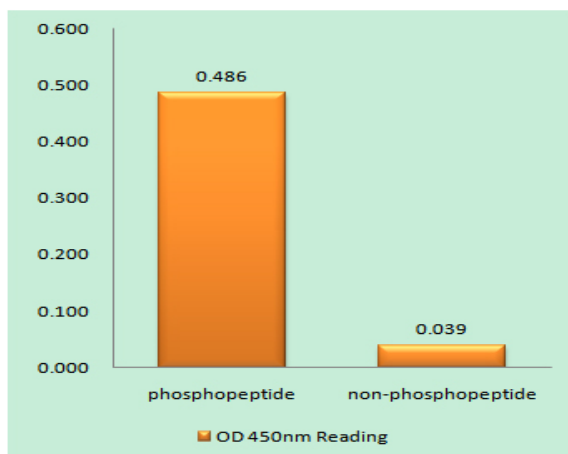
Catalog No :	YP0549
Reactivity :	Human;Mouse
Applications :	WB;IHC;IF;ELISA
Target :	DAPP1
Fields :	>>B cell receptor signaling pathway
Gene Name :	DAPP1
Protein Name :	Dual adapter for phosphotyrosine and 3-phosphotyrosine and 3-phosphoinositide
Human Gene Id :	27071
Human Swiss Prot No :	Q9UN19
Mouse Gene Id :	26377
Mouse Swiss Prot No :	Q9QXT1
Immunogen :	The antiserum was produced against synthesized peptide derived from human DAPP1 around the phosphorylation site of Tyr139. AA range:105-154
Specificity :	Phospho-BAM32 (Y139) Polyclonal Antibody detects endogenous levels of BAM32 protein only when phosphorylated at Y139.
Formulation :	Liquid in PBS containing 50% glycerol, 0.5% BSA and 0.02% sodium azide.
Source :	Polyclonal, Rabbit,IgG
Dilution :	WB 1:500 - 1:2000. IHC 1:100 - 1:300. IF 1:200 - 1:1000. ELISA: 1:5000. Not yet tested in other applications.
Purification :	The antibody was affinity-purified from rabbit antiserum by affinity-chromatography using epitope-specific immunogen.

Concentration :	1 mg/ml
Storage Stability :	-15°C to -25°C/1 year(Do not lower than -25°C)
Observed Band :	32kD
Cell Pathway :	B_Cell_Antigen;
Background :	function:May act as a B-cell-associated adapter that regulates B-cell antigen receptor (BCR)-signaling downstream of PI3K.,induction:Upon B-cell activation.,PTM:Phosphorylated on tyrosine residues.,similarity:Contains 1 PH domain.,similarity:Contains 1 SH2 domain.,subcellular location:Membrane-associated after cell stimulation leading to its translocation.,subunit:Interacts with PtdIns(3,4,5)P3 and PLCG2. In vitro, interacts with PtdIns(3,4)P2.,tissue specificity:Highly expressed in placenta and lung, followed by brain, heart, kidney, liver, pancreas and skeletal muscle. Expressed by B-lymphocytes, but not T-lymphocytes or nonhematopoietic cells.,
Function :	function:May act as a B-cell-associated adapter that regulates B-cell antigen receptor (BCR)-signaling downstream of PI3K.,induction:Upon B-cell activation.,PTM:Phosphorylated on tyrosine residues.,similarity:Contains 1 PH domain.,similarity:Contains 1 SH2 domain.,subcellular location:Membrane-associated after cell stimulation leading to its translocation.,subunit:Interacts with PtdIns(3,4,5)P3 and PLCG2. In vitro, interacts with PtdIns(3,4)P2.,tissue specificity:Highly expressed in placenta and lung, followed by brain, heart, kidney, liver, pancreas and skeletal muscle. Expressed by B-lymphocytes, but not T-lymphocytes or nonhematopoietic cells.,
Subcellular Location :	Cytoplasm . Membrane ; Peripheral membrane protein . Membrane-associated after cell stimulation leading to its translocation.
Expression :	Highly expressed in placenta and lung, followed by brain, heart, kidney, liver, pancreas and skeletal muscle. Expressed by B-lymphocytes, but not T-lymphocytes or nonhematopoietic cells.
Tag :	orthogonal
Sort :	2583
No4 :	1
Host :	Rabbit
Modifications :	Phospho

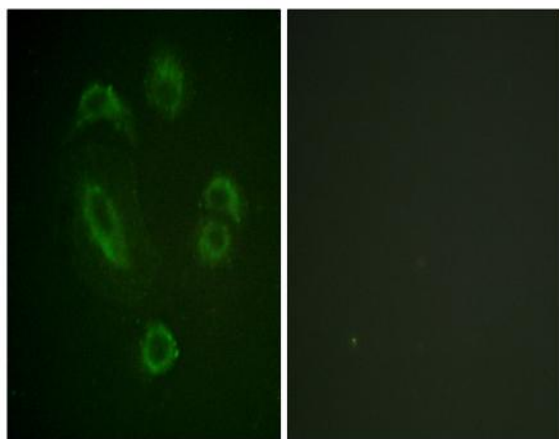
Products Images



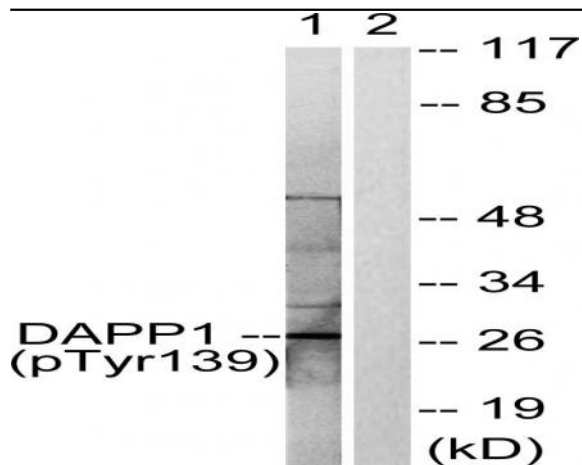
Western Blot analysis of 293 cells using Phospho-BAM32 (Y139) Polyclonal Antibody



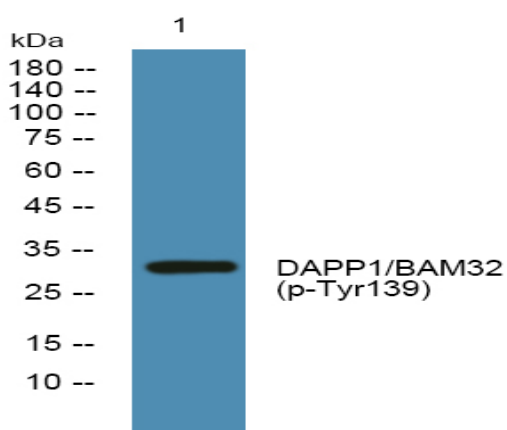
Enzyme-Linked Immunosorbent Assay (Phospho-ELISA) for Immunogen Phosphopeptide (Phospho-left) and Non-Phosphopeptide (Phospho-right), using DAPP1 (Phospho-Tyr139) Antibody



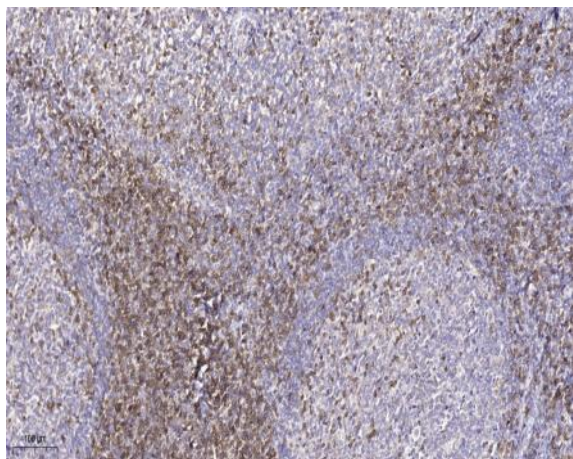
Immunofluorescence analysis of A549 cells, using DAPP1 (Phospho-Tyr139) Antibody. The picture on the right is blocked with the phospho peptide.



Western blot analysis of lysates from 293 cells treated with Insulin 0.01U/ml 2', using DAPP1 (Phospho-Tyr139) Antibody. The lane on the right is blocked with the phospho peptide.



Western blot analysis of lysates from U2OS cells, primary antibody was diluted at 1:1000, 4° over night



Immunohistochemical analysis of paraffin-embedded human tonsil. 1, Tris-EDTA, pH9.0 was used for antigen retrieval. 2 Antibody was diluted at 1:200 (4° overnight). 3, Secondary antibody was diluted at 1:200 (room temperature, 45min).