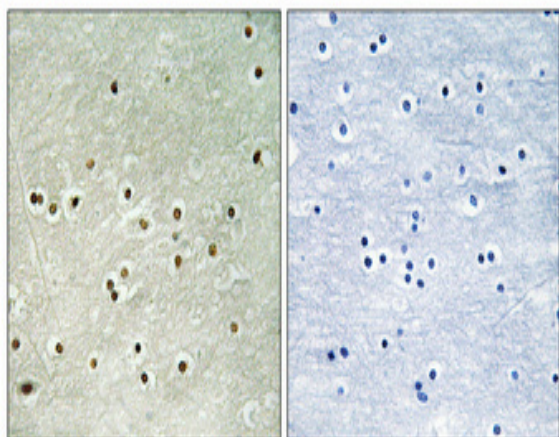


MCM4 (phospho Ser54) Polyclonal Antibody

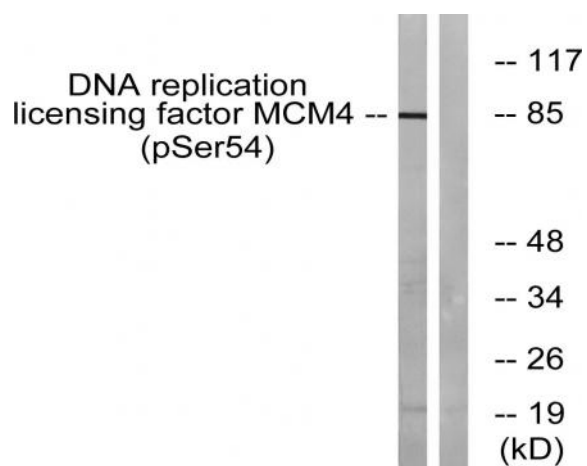
| | |
|------------------------------|---|
| Catalog No : | YP0354 |
| Reactivity : | Human;Mouse;Monkey |
| Applications : | WB;IHC;IF;ELISA |
| Target : | MCM4 |
| Fields : | >>DNA replication;>>Cell cycle |
| Gene Name : | MCM4 |
| Protein Name : | DNA replication licensing factor MCM4 |
| Human Gene Id : | 4173 |
| Human Swiss Prot No : | P33991 |
| Mouse Gene Id : | 17217 |
| Mouse Swiss Prot No : | P49717 |
| Immunogen : | The antiserum was produced against synthesized peptide derived from human MCM4 around the phosphorylation site of Ser54. AA range:20-69 |
| Specificity : | Phospho-MCM4 (S54) Polyclonal Antibody detects endogenous levels of MCM4 protein only when phosphorylated at S54. |
| Formulation : | Liquid in PBS containing 50% glycerol, 0.5% BSA and 0.02% sodium azide. |
| Source : | Polyclonal, Rabbit,IgG |
| Dilution : | WB 1:500 - 1:2000. IHC 1:100 - 1:300. ELISA: 1:20000.. IF 1:50-200 |
| Purification : | The antibody was affinity-purified from rabbit antiserum by affinity-chromatography using epitope-specific immunogen. |
| Concentration : | 1 mg/ml |

| | |
|-------------------------------|---|
| Storage Stability : | -15°C to -25°C/1 year(Do not lower than -25°C) |
| Observed Band : | 85kD |
| Cell Pathway : | DNA replication;Cell_Cycle_G1S;Cell_Cycle_G2M_DNA; |
| Background : | <p>The protein encoded by this gene is one of the highly conserved mini-chromosome maintenance proteins (MCM) that are essential for the initiation of eukaryotic genome replication. The hexameric protein complex formed by MCM proteins is a key component of the pre-replication complex (pre_RC) and may be involved in the formation of replication forks and in the recruitment of other DNA replication related proteins. The MCM complex consisting of this protein and MCM2, 6 and 7 proteins possesses DNA helicase activity, and may act as a DNA unwinding enzyme. The phosphorylation of this protein by CDC2 kinase reduces the DNA helicase activity and chromatin binding of the MCM complex. This gene is mapped to a region on the chromosome 8 head-to-head next to the PRKDC/DNA-PK, a DNA-activated protein kinase involved in the repair of DNA double-strand breaks. Alternatively spliced transcri</p> |
| Function : | function:Involved in the control of DNA replication.,similarity:Belongs to the MCM family.,similarity:Contains 1 MCM domain., |
| Subcellular Location : | Nucleus . Chromosome . Associated with chromatin before the formation of nuclei and detaches from it as DNA replication progresses. . |
| Expression : | Cervix,Epithelium,Testis, |
| Tag : | orthogonal |
| Sort : | 9466 |
| No4 : | 1 |
| Host : | Rabbit |
| Modifications : | Phospho |

Products Images



Immunohistochemical analysis of paraffin-embedded Human brain. Antibody was diluted at 1:100(4° overnight). High-pressure and temperature Tris-EDTA,pH8.0 was used for antigen retrieval. Negative contrl (right) obtained from antibody was pre-absorbed by immunogen peptide.



Western blot analysis of lysates from COS7 cells treated with nocodazole 1ug/ml 16h, using MCM4 (Phospho-Ser54) Antibody. The lane on the right is blocked with the phospho peptide.