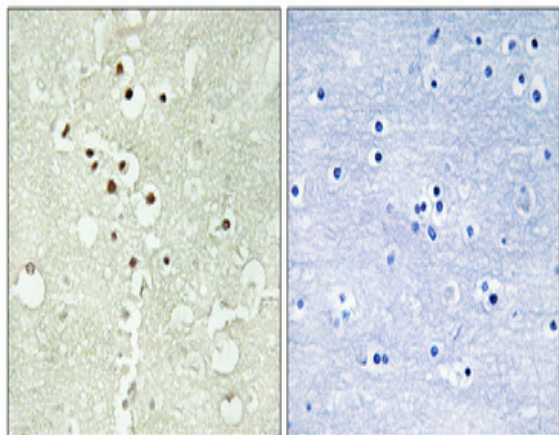


Cyclin H (phospho Thr315) Polyclonal Antibody

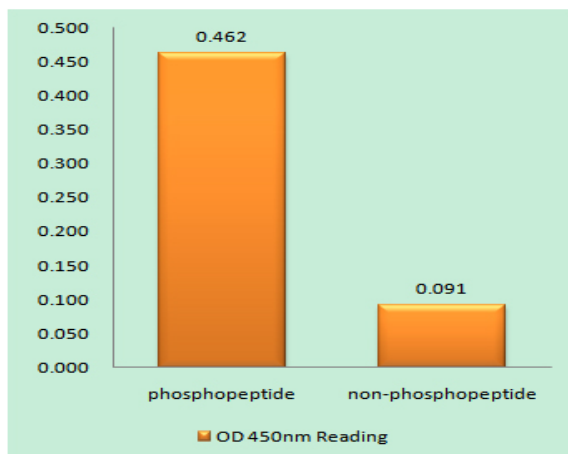
Catalog No :	YP0352
Reactivity :	Human;Mouse;Rat
Applications :	WB;IHC;IF;ELISA
Target :	Cyclin H
Fields :	>>Basal transcription factors;>>Nucleotide excision repair;>>Cell cycle
Gene Name :	CCNH
Protein Name :	Cyclin-H
Human Gene Id :	902
Human Swiss Prot No :	P51946
Mouse Gene Id :	66671
Mouse Swiss Prot No :	Q61458
Rat Gene Id :	84389
Rat Swiss Prot No :	Q9R1A0
Immunogen :	The antiserum was produced against synthesized peptide derived from human Cyclin H around the phosphorylation site of Thr315. AA range:274-323
Specificity :	Phospho-Cyclin H (T315) Polyclonal Antibody detects endogenous levels of Cyclin H protein only when phosphorylated at T315.
Formulation :	Liquid in PBS containing 50% glycerol, 0.5% BSA and 0.02% sodium azide.
Source :	Polyclonal, Rabbit,IgG
Dilution :	WB 1:500 - 1:2000. IHC 1:100 - 1:300. ELISA: 1:10000.. IF 1:50-200

Purification :	The antibody was affinity-purified from rabbit antiserum by affinity-chromatography using epitope-specific immunogen.
Concentration :	1 mg/ml
Storage Stability :	-15°C to -25°C/1 year(Do not lower than -25°C)
Observed Band :	34 36kD
Cell Pathway :	Nucleotide excision repair;Cell_Cycle_G1S;Cell_Cycle_G2M_DNA;
Background :	<p>The protein encoded by this gene belongs to the highly conserved cyclin family, whose members are characterized by a dramatic periodicity in protein abundance through the cell cycle. Cyclins function as regulators of CDK kinases. Different cyclins exhibit distinct expression and degradation patterns which contribute to the temporal coordination of each mitotic event. This cyclin forms a complex with CDK7 kinase and ring finger protein MAT1. The kinase complex is able to phosphorylate CDK2 and CDC2 kinases, thus functions as a CDK-activating kinase (CAK). This cyclin and its kinase partner are components of TFIIH, as well as RNA polymerase II protein complexes. They participate in two different transcriptional regulation processes, suggesting an important link between basal transcription control and the cell cycle machinery. A pseudogene of this gene is found on chromosome 4. Alternate splicing results in multiple t</p>
Function :	<p>function:Regulates CDK7, the catalytic subunit of the CDK-activating kinase (CAK) enzymatic complex. CAK activates the cyclin-associated kinases CDC2/CDK1, CDK2, CDK4 and CDK6 by threonine phosphorylation. CAK complexed to the core-TFIIH basal transcription factor activates RNA polymerase II by serine phosphorylation of the repetitive C-terminus domain (CTD) of its large subunit (POLR2A), allowing its escape from the promoter and elongation of the transcripts. Involved in cell cycle control and in RNA transcription by RNA polymerase II. Its expression and activity are constant throughout the cell cycle.,similarity:Belongs to the cyclin family.,similarity:Belongs to the cyclin family. Cyclin C subfamily.,subunit:Associates primarily with CDK7 and MAT1 to form the CAK complex. CAK can further associate with the core-TFIIH to form the TFIIH basal transcription factor.,</p>
Subcellular Location :	Nucleus.
Expression :	Bone marrow,Brain,Embryonic brain,Epithelium,Liver,Urinary bladder,
Sort :	4738
No4 :	1
Host :	Rabbit

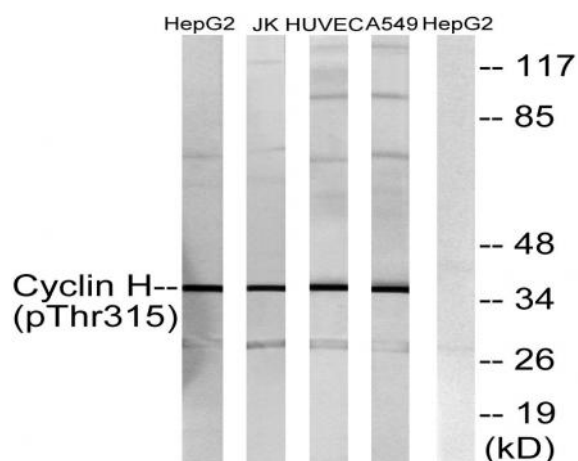
Products Images



Immunohistochemical analysis of paraffin-embedded Human brain. Antibody was diluted at 1:100(4° overnight). High-pressure and temperature Tris-EDTA,pH8.0 was used for antigen retrieval. Negative control (right) obtained from antibody was pre-absorbed by immunogen peptide.



Enzyme-Linked Immunosorbent Assay (Phospho-ELISA) for Immunogen Phosphopeptide (Phospho-left) and Non-Phosphopeptide (Phospho-right), using Cyclin H (Phospho-Thr315) Antibody



Western blot analysis of lysates from HepG2 cells, Jurkat cells, HUVEC cells and A549 cells, using Cyclin H (Phospho-Thr315) Antibody. The lane on the right is blocked with the phospho peptide.