

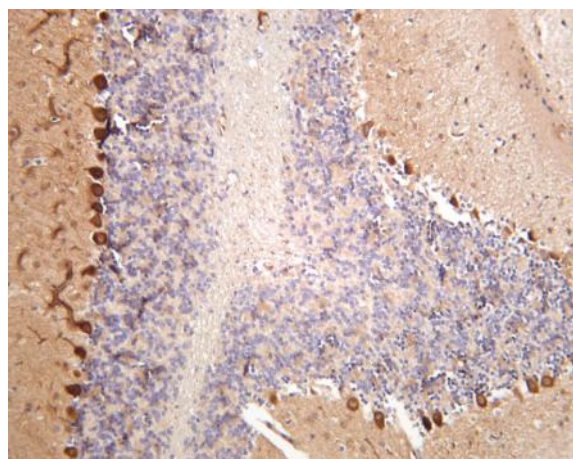
S6K1 (PT0095R) PT® Rabbit mAb

Catalog No :	YM8055
Reactivity :	Human; Mouse; Rat;
Applications :	WB;IHC;IF;IP;ELISA
Gene Name :	>>EGFR tyrosine kinase inhibitor resistance;>>Endocrine resistance;>>ErbB signaling pathway;>>HIF-1 signaling pathway;>>Autophagy - animal;>>mTOR signaling pathway;>>PI3K-Akt signaling pathway;>>AMPK signaling pathway;>>Longevity regulating pathway;>>Longevity regulating pathway - multiple species;>>TGF-beta signaling pathway;>>Apelin signaling pathway;>>Fc gamma R-mediated phagocytosis;>>Thermogenesis;>>Insulin signaling pathway;>>Insulin resistance;>>Shigellosis;>>Human cytomegalovirus infection;>>Human papillomavirus infection;>>Human immunodeficiency virus 1 infection;>>Pathways in cancer;>>Proteoglycans in cancer;>>Chemical carcinogenesis - receptor activation;>>Colorectal cancer;>>Pancreatic cancer;>>Acute myeloid leukemia;>>Breast cancer;>>Hepatocellular carcinoma;>>Gastric cancer;>>Choline metabolism in cancer;>>PD-L1 expression and PD-1 checkpoint pathway in cancer
Protein Name :	RPS6KB1
Sequence :	Ribosomal protein S6 kinase beta-1
Human Gene Id :	6198
Human Swiss Prot No :	P23443
Mouse Gene Id :	72508
Mouse Swiss Prot No :	Q8BSK8
Rat Gene Id :	83840
Rat Swiss Prot No :	P67999
Specificity :	endogenous
Formulation :	PBS, 50% glycerol, 0.05% Proclin 300, 0.05%BSA

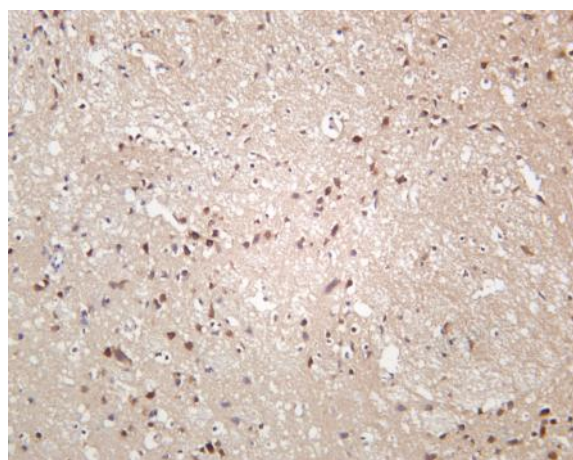
Source :	Monoclonal, rabbit, IgG, Kappa
Dilution :	IHC 1:200-1:1000, WB 1:1000-1:5000, IF 1:200-1:1000, ELISA 1:5000-1:20000, IP 1:50-1:200,
Purification :	Protein A
Storage Stability :	-15°C to -25°C/1 year (Do not lower than -25°C)
Molecularweight :	75kD
Observed Band :	70kD
Cell Pathway :	Regulates Angiogenesis; Insulin Receptor; ErbB/HER; mTOR; B Cell Receptor; PI3K/Akt; PI3K/Akt; AMPK
Background :	ribosomal protein S6 kinase B1 (RPS6KB1) Homo sapiens This gene encodes a member of the ribosomal S6 kinase family of serine/threonine kinases. The encoded protein responds to mTOR (mammalian target of rapamycin) signaling to promote protein synthesis, cell growth, and cell proliferation. Activity of this gene has been associated with human cancer. Alternatively spliced transcript variants have been observed. The use of alternative translation start sites results in isoforms with longer or shorter N-termini which may differ in their subcellular localizations. There are two pseudogenes for this gene on chromosome 17. [provided by RefSeq, Jan 2013],
Function :	catalytic activity: ATP + a protein = ADP + a phosphoprotein., enzyme regulation: Activation by serine/threonine phosphorylation and protein kinase C, inactivated by type 2A phosphatase., function: Phosphorylates specifically ribosomal protein S6 in response to insulin or several classes of mitogens., similarity: Belongs to the protein kinase superfamily., similarity: Belongs to the protein kinase superfamily. AGC Ser/Thr protein kinase family. S6 kinase subfamily., similarity: Contains 1 AGC-kinase C-terminal domain., similarity: Contains 1 protein kinase domain., subunit: Interacts with PPP1R9A/neurabin-1., tissue specificity: Widely expressed.,
Subcellular Location :	Cytoplasm
Expression :	Widely expressed.
Tag :	hot, recombinant
Sort :	1
No3 :	ab32529

No4 :	1
Host :	Rabbit
Modifications :	Unmodified

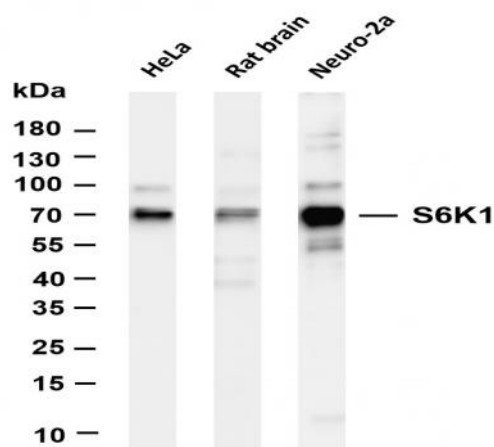
Products Images



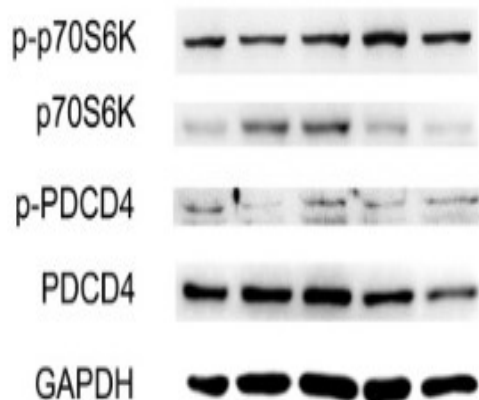
Mouse brain was stained with anti-S6K1 (PT0095R) rabbit antibody



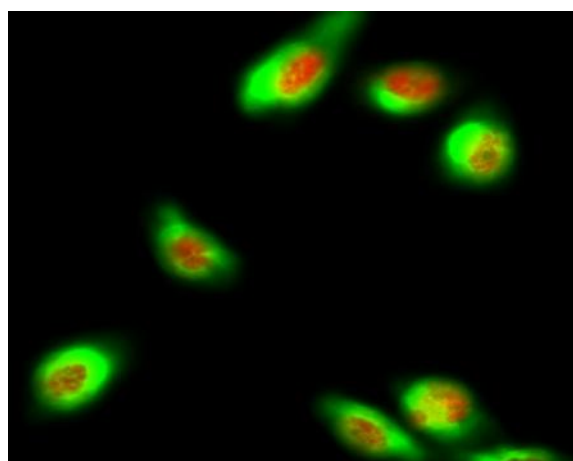
Rat brain was stained with anti-S6K1 (PT0095R) rabbit antibody



Various whole cell lysates were separated by 4-20% SDS-PAGE, and the membrane was blotted with anti-S6K1 (PT0095R) antibody. The HRP-conjugated Goat anti-Rabbit IgG(H + L) antibody was used to detect the antibody. Lane 1: HeLa Lane 2: Rat brain Lane 3: Neuro-2a Predicted band size: 75kDa Observed band size: 70kDa



Ge, Cheng, et al. "Atheroprotective Pulsatile Flow Induces Ubiquitin-Proteasome-Mediated Degradation of Programmed Cell Death 4 in Endothelial Cells." PloS one 9.3 (2014): e91564.



Immunofluorescence analysis of HeLa cell. 1, p70 S6 kinase α Antibody (red) was diluted at 1:200 (4° overnight). CK7 Monoclonal Antibody (12D7) (green) was diluted at 1:200 (4° overnight). 2, Goat Anti Rabbit Alexa Fluor 594 Catalog:RS3611 was diluted at 1:1000 (room temperature, 50min). Goat Anti Mouse Alexa Fluor 488 Catalog:RS3208 was diluted at 1:1000 (room temperature, 50min).