

PKC α (phospho Tyr658) Polyclonal Antibody

Catalog No :	YP0339
Reactivity :	Human;Mouse;Rat
Applications :	WB;IHC
Target :	PKC α
Fields :	>>EGFR tyrosine kinase inhibitor resistance;>>MAPK signaling pathway;>>ErbB signaling pathway;>>Ras signaling pathway;>>Rap1 signaling pathway;>>Calcium signaling pathway;>>HIF-1 signaling pathway;>>Phosphatidylinositol signaling system;>>Sphingolipid signaling pathway;>>Phospholipase D signaling pathway;>>mTOR signaling pathway;>>PI3K-Akt signaling pathway;>>Adrenergic signaling in cardiomyocytes;>>Vascular smooth muscle contraction;>>Wnt signaling pathway;>>Axon guidance;>>VEGF signaling pathway;>>Focal adhesion;>>Gap junction;>>Neutrophil extracellular trap formation;>>Natural killer cell mediated cytotoxicity;>>Fc epsilon RI signaling pathway;>>Fc gamma R-mediated phagocytosis;>>Leukocyte transendothelial migration;>>Circadian entrainment;>>Long-term potentiation;>>Retrograde endocannabinoid signaling;>>Glutamatergic synapse;>>Cholinergic synapse;>>Serotonergic synapse;>>GABAergic synapse;>>Dopaminergic synapse;>>Long-term depression;>>Inflammatory mediator regulation of TRP channe
Gene Name :	PRKCA
Protein Name :	Protein kinase C alpha type
Human Gene Id :	5578
Human Swiss Prot No :	P17252
Mouse Gene Id :	18750
Mouse Swiss Prot No :	P20444
Rat Swiss Prot No :	P05696
Immunogen :	The antiserum was produced against synthesized peptide derived from human PKC alpha around the phosphorylation site of Tyr657. AA range:623-672

Specificity :	Phospho-PKC α (Y657) Polyclonal Antibody detects endogenous levels of PKC α protein only when phosphorylated at Y657.
Formulation :	Liquid in PBS containing 50% glycerol, 0.5% BSA and 0.02% sodium azide.
Source :	Polyclonal, Rabbit,IgG
Dilution :	WB 1:500-2000;IHC 1:50-300
Purification :	The antibody was affinity-purified from rabbit antiserum by affinity-chromatography using epitope-specific immunogen.
Concentration :	1 mg/ml
Storage Stability :	-15°C to -25°C/1 year(Do not lower than -25°C)
Observed Band :	80kD
Cell Pathway :	Regulation_Microtubule; Regulation of Actin Dynamics; Stem cell pathway; Insulin Receptor; ErbB/HER; MAPK_ERK_Growth;MAPK_G_Protein; WNT;WNT-T CELL; β -Catenin; B Cell Receptor; PI3K/Akt; mTOR; AMPK
Background :	Protein kinase C (PKC) is a family of serine- and threonine-specific protein kinases that can be activated by calcium and the second messenger diacylglycerol. PKC family members phosphorylate a wide variety of protein targets and are known to be involved in diverse cellular signaling pathways. PKC family members also serve as major receptors for phorbol esters, a class of tumor promoters. Each member of the PKC family has a specific expression profile and is believed to play a distinct role in cells. The protein encoded by this gene is one of the PKC family members. This kinase has been reported to play roles in many different cellular processes, such as cell adhesion, cell transformation, cell cycle checkpoint, and cell volume control. Knockout studies in mice suggest that this kinase may be a fundamental regulator of cardiac contractility and Ca(2+) handling in myocytes. [provided by RefSeq, Jul 2
Function :	catalytic activity:ATP + a protein = ADP + a phosphoprotein.,cofactor:Binds 3 calcium ions per subunit. The ions are bound to the C2 domain.,function:PKC is activated by diacylglycerol which in turn phosphorylates a range of cellular proteins. PKC also serves as the receptor for phorbol esters, a class of tumor promoters.,function:This is a calcium-activated, phospholipid-dependent, serine- and threonine-specific enzyme. May play a role in cell motility by phosphorylating CSPG4.,similarity:Belongs to the protein kinase superfamily.,similarity:Belongs to the protein kinase superfamily. AGC Ser/Thr protein kinase family. PKC subfamily.,similarity:Contains 1 AGC-kinase C-terminal domain.,similarity:Contains 1 C2 domain.,similarity:Contains 1 protein kinase domain.,similarity:Contains 2 phorbol-ester/DAG-type zinc fingers.,subunit:Interacts with ADAP1/CENTA1, CSPG4 and PRKCABP. Binds to

SDPR

Subcellular Location :

Cytoplasm . Cell membrane ; Peripheral membrane protein . Mitochondrion membrane ; Peripheral membrane protein . Nucleus .

Expression :

Blood,Brain,Epithelium,Lung,Platelet,

Sort :

12739

No4 :

1

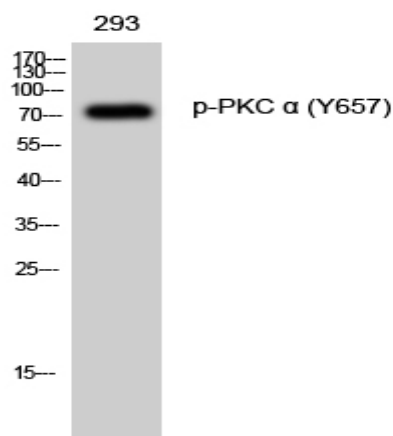
Host :

Rabbit

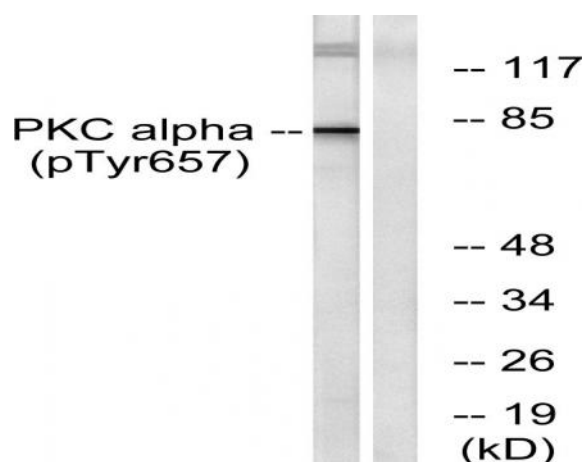
Modifications :

Phospho

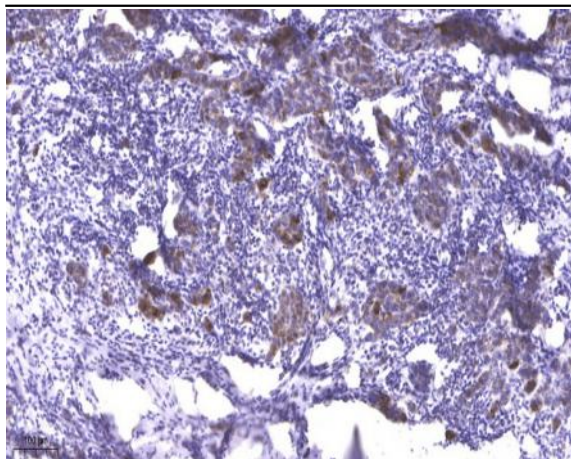
Products Images



Western Blot analysis of 293 cells using Phospho-PKC α (Y657) Polyclonal Antibody diluted at 1:1000



Western blot analysis of lysates from COLO205 cells, using PKC alpha (Phospho-Tyr657) Antibody. The lane on the right is blocked with the phospho peptide.



Immunohistochemical analysis of paraffin-embedded human Breast cancer. 1, Antibody was diluted at 1:200(4° overnight). 2, Tris-EDTA,pH9.0 was used for antigen retrieval. 3,Secondary antibody was diluted at 1:200(room temperature, 45min).