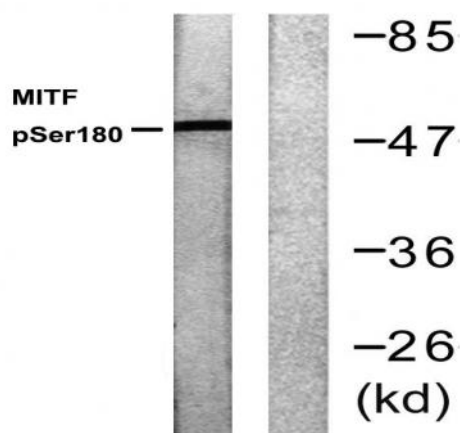


MITF (phospho Ser180) Polyclonal Antibody

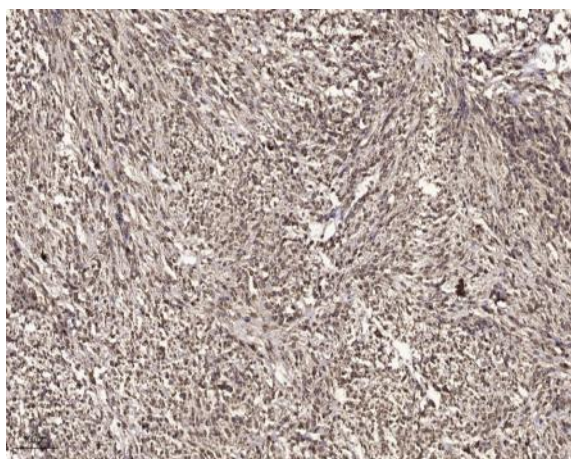
Catalog No :	YP0310
Reactivity :	Human;Mouse;Monkey
Applications :	WB;IHC;IF;ELISA
Target :	MITF
Fields :	>>Mitophagy - animal;>>Osteoclast differentiation;>>Melanogenesis;>>Pathways in cancer;>>Transcriptional misregulation in cancer;>>Melanoma
Gene Name :	MITF
Protein Name :	Microphthalmia-associated transcription factor
Human Gene Id :	4286
Human Swiss Prot No :	O75030
Mouse Gene Id :	17342
Mouse Swiss Prot No :	Q08874
Immunogen :	The antiserum was produced against synthesized peptide derived from human MITF around the phosphorylation site of Ser180/73. AA range:151-200
Specificity :	Phospho-MITF (S180) Polyclonal Antibody detects endogenous levels of MITF protein only when phosphorylated at S180.
Formulation :	Liquid in PBS containing 50% glycerol, 0.5% BSA and 0.02% sodium azide.
Source :	Polyclonal, Rabbit,IgG
Dilution :	WB 1:500 - 1:2000. IHC 1:100 - 1:300. ELISA: 1:10000.. IF 1:50-200
Purification :	The antibody was affinity-purified from rabbit antiserum by affinity-chromatography using epitope-specific immunogen.

Concentration :	1 mg/ml
Storage Stability :	-15°C to -25°C/1 year(Do not lower than -25°C)
Observed Band :	52kD
Cell Pathway :	Melanogenesis;Pathways in cancer;Melanoma;
Background :	<p>This gene encodes a transcription factor that contains both basic helix-loop-helix and leucine zipper structural features. It regulates the differentiation and development of melanocytes retinal pigment epithelium and is also responsible for pigment cell-specific transcription of the melanogenesis enzyme genes. Heterozygous mutations in the this gene cause auditory-pigmentary syndromes, such as Waardenburg syndrome type 2 and Tietz syndrome. Alternatively spliced transcript variants encoding different isoforms have been identified. [provided by RefSeq, Jul 2008],</p>
Function :	<p>alternative products:The X2-type isoforms differ from the X1-type isoforms by the absence of a 6 residue insert,disease:Defects in MITF are a cause of Waardenburg syndrome type 2 with ocular albinism (WS2-OA) [MIM:103470]. It is an ocular albinism with sensorineural deafness.,disease:Defects in MITF are the cause of Tietz syndrome [MIM:103500]. It is an autosomal dominant disorder characterized by generalized hypopigmentation and profound, congenital, bilateral deafness. Penetrance is complete.,disease:Defects in MITF are the cause of Waardenburg syndrome type 2A (WS2A) [MIM:193510]. It is a dominant inherited disorder characterized by sensorineural hearing loss and patches of depigmentation. The features show variable expression and penetrance.,function:Transcription factor for tyrosinase and tyrosinase-related protein 1. Binds to a symmetrical DNA sequence (E-boxes) (5'-CACGTG-3') four</p>
Subcellular Location :	Nucleus . Cytoplasm . Found exclusively in the nucleus upon phosphorylation. .
Expression :	<p>Expressed in melanocytes (at protein level). ; [Isoform A2]: Expressed in the retinal pigment epithelium, brain, and placenta (PubMed:9647758). Expressed in the kidney (PubMed:9647758, PubMed:10578055). ; [Isoform C2]: Expressed in the kidney and retinal pigment epithelium. ; [Isoform H1]: Expressed in the kidney. ; [Isoform H2]: Expressed in the kidney. ; [Isoform M1]: Expressed in melanocytes. ; [Isoform Mdel]: Expressed in melanocytes.</p>
Sort :	9655
No4 :	1
Host :	Rabbit
Modifications :	Phospho

Products Images



Western blot analysis of lysates from COS7 cells, using MITF (Phospho-Ser180/73) Antibody. The lane on the right is blocked with the phospho peptide.



Immunohistochemical analysis of paraffin-embedded human small intestinal carcinoma tissue. 1, primary Antibody was diluted at 1:200 (4° overnight). 2, Sodium citrate pH 6.0 was used for antigen retrieval (>98° C, 20min). 3, Secondary antibody was diluted at 1:200