

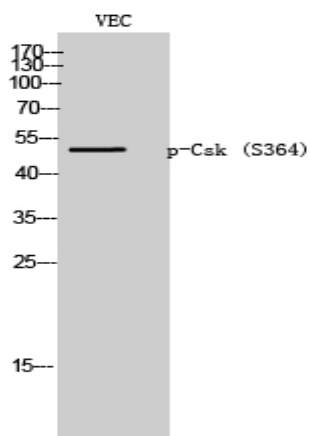
Csk (phospho Ser364) Polyclonal Antibody

Catalog No :	YP0296
Reactivity :	Human;Mouse;Rat
Applications :	WB;IHC;IF;ELISA
Target :	Csk
Fields :	>>Epithelial cell signaling in Helicobacter pylori infection
Gene Name :	CSK
Protein Name :	Tyrosine-protein kinase CSK
Human Gene Id :	1445
Human Swiss Prot No :	P41240
Mouse Gene Id :	12988
Mouse Swiss Prot No :	P41241
Rat Gene Id :	315707
Rat Swiss Prot No :	P32577
Immunogen :	The antiserum was produced against synthesized peptide derived from human Csk around the phosphorylation site of Ser364. AA range:330-379
Specificity :	Phospho-Csk (S364) Polyclonal Antibody detects endogenous levels of Csk protein only when phosphorylated at S364.
Formulation :	Liquid in PBS containing 50% glycerol, 0.5% BSA and 0.02% sodium azide.
Source :	Polyclonal, Rabbit,IgG
Dilution :	WB 1:500 - 1:2000. IHC 1:100 - 1:300. ELISA: 1:10000.. IF 1:50-200

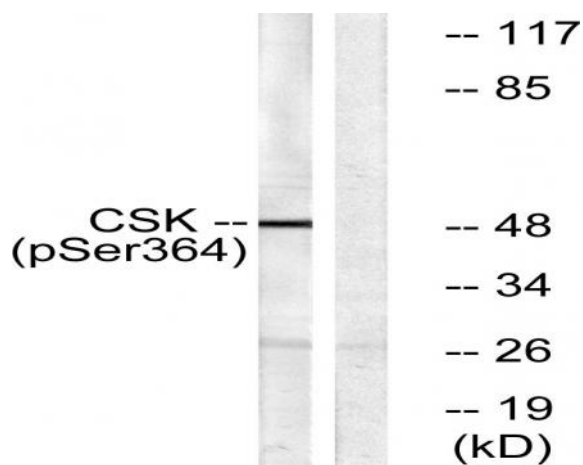
Purification :	The antibody was affinity-purified from rabbit antiserum by affinity-chromatography using epitope-specific immunogen.
Concentration :	1 mg/ml
Storage Stability :	-15°C to -25°C/1 year(Do not lower than -25°C)
Observed Band :	55kD
Cell Pathway :	Chemokine;Neurotrophin;Regulates Actin and Cytoskeleton;Epithelial cell signaling in Helicobacter pylori infection;
Background :	<p>catalytic activity:ATP + a [protein]-L-tyrosine = ADP + a [protein]-L-tyrosine phosphate.,function:Specifically phosphorylates 'Tyr-504' on LCK, which acts as a negative regulatory site. Can also act on the LYN and FYN kinases.,PTM:Autophosphorylation of Tyr-304 occurs only at abnormally high CSK concentrations in vitro.,similarity:Belongs to the protein kinase superfamily. Tyr protein kinase family.,similarity:Belongs to the protein kinase superfamily. Tyr protein kinase family. CSK subfamily.,similarity:Contains 1 protein kinase domain.,similarity:Contains 1 SH2 domain.,similarity:Contains 1 SH3 domain.,subcellular location:Mainly cytoplasmic, also present in lipid rafts.,subunit:Interacts with PTPN8 (By similarity). Interacts with phosphorylated SIT1, PAG1, LIME1 and TGFB111.,tissue specificity:Expressed in lung and macrophages.,</p>
Function :	<p>catalytic activity:ATP + a [protein]-L-tyrosine = ADP + a [protein]-L-tyrosine phosphate.,function:Specifically phosphorylates 'Tyr-504' on LCK, which acts as a negative regulatory site. Can also act on the LYN and FYN kinases.,PTM:Autophosphorylation of Tyr-304 occurs only at abnormally high CSK concentrations in vitro.,similarity:Belongs to the protein kinase superfamily. Tyr protein kinase family.,similarity:Belongs to the protein kinase superfamily. Tyr protein kinase family. CSK subfamily.,similarity:Contains 1 protein kinase domain.,similarity:Contains 1 SH2 domain.,similarity:Contains 1 SH3 domain.,subcellular location:Mainly cytoplasmic, also present in lipid rafts.,subunit:Interacts with PTPN8 (By similarity). Interacts with phosphorylated SIT1, PAG1, LIME1 and TGFB111.,tissue specificity:Expressed in lung and macrophages.,</p>
Subcellular Location :	Cytoplasm . Cell membrane . Mainly cytoplasmic, also present in lipid rafts. .
Expression :	Expressed in lung and macrophages.
Tag :	orthogonal
Sort :	4614

No4 :	1
Host :	Rabbit
Modifications :	Phospho

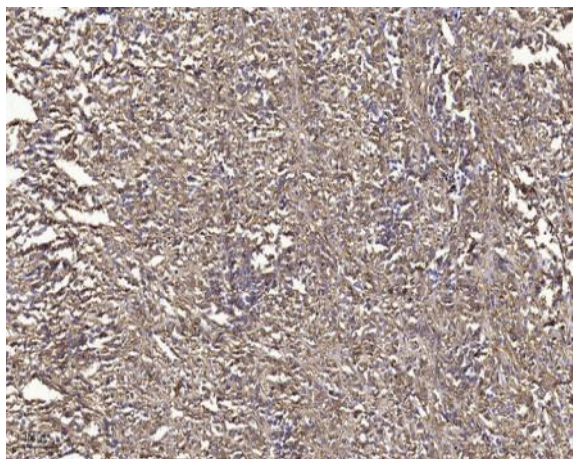
Products Images



Western Blot analysis of VEC cells using Phospho-Csk (S364) Polyclonal Antibody



Western blot analysis of lysates from HeLa cells treated with PMA 125ng/ml 30', using Csk (Phospho-Ser364) Antibody. The lane on the right is blocked with the phospho peptide.



Immunohistochemical analysis of paraffin-embedded human small intestinal carcinoma tissue. 1, primary Antibody was diluted at 1:200 (4° overnight). 2, Sodium citrate pH 6.0 was used for antigen retrieval (>98° C, 20min). 3, Secondary antibody was diluted at 1:200