

Tensin-2 (phospho Tyr483) Polyclonal Antibody

Catalog No :	YP0268
Reactivity :	Human;Mouse
Applications :	WB;ELISA
Target :	Tensin-2
Gene Name :	TENC1
Protein Name :	Tensin-like C1 domain-containing phosphatase
Human Gene Id :	23371
Human Swiss Prot No :	Q63HR2
Mouse Gene Id :	209039
Mouse Swiss Prot No :	Q8CGB6
Immunogen :	Synthesized phospho-peptide around the phosphorylation site of human Tensin-2 (phospho Tyr483)
Specificity :	Phospho-Tensin-2 (Y483) Polyclonal Antibody detects endogenous levels of Tensin-2 protein only when phosphorylated at Y483.
Formulation :	Liquid in PBS containing 50% glycerol, 0.5% BSA and 0.02% sodium azide.
Source :	Polyclonal, Rabbit,IgG
Dilution :	WB 1:500 - 1:2000. ELISA: 1:10000. Not yet tested in other applications.
Purification :	The antibody was affinity-purified from rabbit antiserum by affinity-chromatography using epitope-specific immunogen.
Concentration :	1 mg/ml
Storage Stability :	-15°C to -25°C/1 year(Do not lower than -25°C)

Observed Band : 152kD

Background : The protein encoded by this gene belongs to the tensin family. Tensin is a focal adhesion molecule that binds to actin filaments and participates in signaling pathways. This protein plays a role in regulating cell migration. Alternative splicing occurs at this locus and three transcript variants encoding three distinct isoforms have been identified. [provided by RefSeq, Jul 2008],

Function : function:Regulates cell motility and proliferation. May have phosphatase activity. Reduces AKT1 phosphorylation. Lowers AKT1 kinase activity and interferes with AKT1 signaling.,similarity:Contains 1 C2 tensin-type domain.,similarity:Contains 1 phorbol-ester/DAG-type zinc finger.,similarity:Contains 1 phosphatase tensin-type domain.,similarity:Contains 1 SH2 domain.,subcellular location:Detected at the end of actin stress fibers.,subunit:Interacts with AXL.,tissue specificity:Detected in heart, kidney, brain, thymus, spleen, liver, placenta, lung, skeletal muscle and small intestine.,

Subcellular Location : Cell junction, focal adhesion . Cell membrane ; Peripheral membrane protein ; Cytoplasmic side . Detected at the end of actin stress fibers. Detected in cytoplasmic punctate bodies (PubMed:22019427) .

Expression : Detected in heart, kidney, brain, thymus, spleen, liver, placenta, lung, skeletal muscle and small intestine.

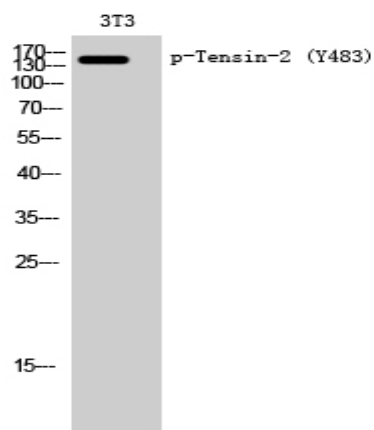
Sort : 17037

No4 : 1

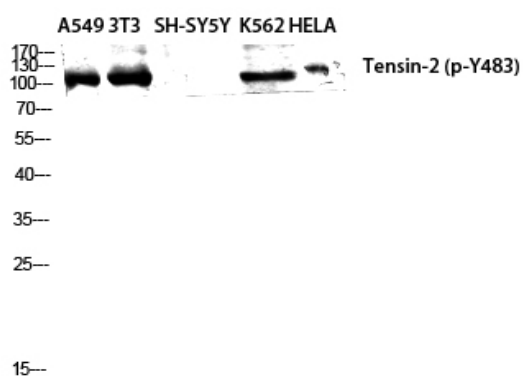
Host : Rabbit

Modifications : Phospho

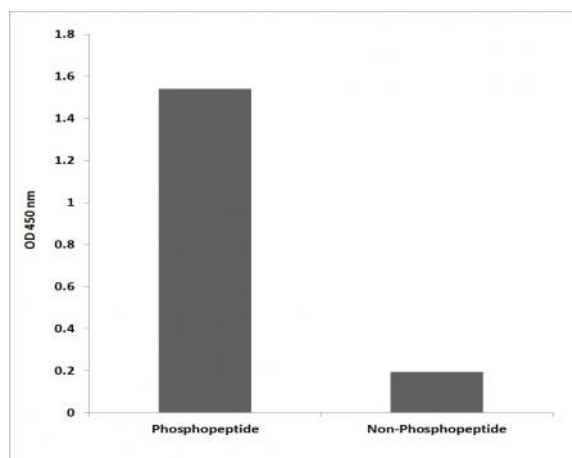
Products Images



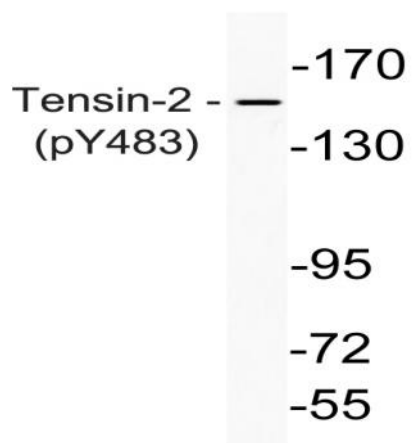
Western Blot analysis of 3T3 cells using Phospho-Tensin-2 (Y483) Polyclonal Antibody diluted at 1:2000



Western Blot analysis of A549 NIH-3T3 SH-SY5Y K562 HELA cells using Phospho-Tensin-2 (Y483) Polyclonal Antibody diluted at 1:2000



Enzyme-Linked Immunosorbent Assay (Phospho-ELISA) for Immunogen Phosphopeptide (Phospho-left) and Non-Phosphopeptide (Phospho-right), using Tensin-2 (Phospho-Tyr483) Antibody



Western blot analysis of lysate from K562 cells, using phospho-Tensin-2 (Phospho-Tyr483) antibody .