

PLC γ 1 (phospho Tyr783) Polyclonal Antibody

Catalog No :	YP0234
Reactivity :	Human;Mouse;Rat;Monkey
Applications :	WB;IHC;IF;ELISA
Target :	PLCG1
Fields :	>>Inositol phosphate metabolism;>>Metabolic pathways;>>EGFR tyrosine kinase inhibitor resistance;>>ErbB signaling pathway;>>Ras signaling pathway;>>Rap1 signaling pathway;>>Calcium signaling pathway;>>Chemokine signaling pathway;>>NF-kappa B signaling pathway;>>HIF-1 signaling pathway;>>Phosphatidylinositol signaling system;>>Phospholipase D signaling pathway;>>Axon guidance;>>VEGF signaling pathway;>>Neutrophil extracellular trap formation;>>Natural killer cell mediated cytotoxicity;>>Th1 and Th2 cell differentiation;>>Th17 cell differentiation;>>T cell receptor signaling pathway;>>Fc epsilon RI signaling pathway;>>Fc gamma R-mediated phagocytosis;>>Leukocyte transendothelial migration;>>Neurotrophin signaling pathway;>>Inflammatory mediator regulation of TRP channels;>>Thyroid hormone signaling pathway;>>AGE-RAGE signaling pathway in diabetic complications;>>Growth hormone synthesis, secretion and action;>>Parkinson disease;>>Pathways of neurodegeneration - multiple diseases;>>Vibrio
Gene Name :	PLCG1
Protein Name :	1-phosphatidylinositol 4,5-bisphosphate phosphodiesterase gamma-1
Human Gene Id :	5335
Human Swiss Prot No :	P19174
Mouse Gene Id :	18803
Mouse Swiss Prot No :	Q62077
Rat Gene Id :	25738
Rat Swiss Prot No :	P10686

Immunogen :	The antiserum was produced against synthesized peptide derived from human PLCG1 around the phosphorylation site of Tyr783. AA range:751-800
Specificity :	Phospho-PLC γ 1 (Y783) Polyclonal Antibody detects endogenous levels of PLC γ 1 protein only when phosphorylated at Y783.
Formulation :	Liquid in PBS containing 50% glycerol, 0.5% BSA and 0.02% sodium azide.
Source :	Polyclonal, Rabbit,IgG
Dilution :	WB 1:500 - 1:2000. IHC 1:100 - 1:300. ELISA: 1:10000.. IF 1:50-200
Purification :	The antibody was affinity-purified from rabbit antiserum by affinity-chromatography using epitope-specific immunogen.
Concentration :	1 mg/ml
Storage Stability :	-15°C to -25°C/1 year(Do not lower than -25°C)
Observed Band :	150kD
Cell Pathway :	Inositol phosphate metabolism;ErbB_HER;Calcium;Phosphatidylinositol signaling system;VEGF;Natural killer cell mediated cytotoxicity;T_Cell_Receptor;Fc epsilon RI;Fc gamma R-mediated phagocytosis;Leuko
Background :	The protein encoded by this gene catalyzes the formation of inositol 1,4,5-trisphosphate and diacylglycerol from phosphatidylinositol 4,5-bisphosphate. This reaction uses calcium as a cofactor and plays an important role in the intracellular transduction of receptor-mediated tyrosine kinase activators. For example, when activated by SRC, the encoded protein causes the Ras guanine nucleotide exchange factor RasGRP1 to translocate to the Golgi, where it activates Ras. Also, this protein has been shown to be a major substrate for heparin-binding growth factor 1 (acidic fibroblast growth factor)-activated tyrosine kinase. Two transcript variants encoding different isoforms have been found for this gene. [provided by RefSeq, Jul 2008],
Function :	catalytic activity:1-phosphatidyl-1D-myo-inositol 4,5-bisphosphate + H(2)O = 1D-myo-inositol 1,4,5-trisphosphate + diacylglycerol.,cofactor:Calcium.,domain:The SH3 domain mediates interaction with CLNK (By similarity). The SH3 domain also mediates interaction with RALGPS1.,function:PLC-gamma is a major substrate for heparin-binding growth factor 1 (acidic fibroblast growth factor)-activated tyrosine kinase.,PTM:The receptor-mediated activation of PLC-gamma-1 and PLC-gamma-2 involves their phosphorylation by tyrosine kinases in response to ligation of a variety of growth factor receptors and immune system receptors.,PTM:Ubiquitinated by CBLB in activated T-cells.,similarity:Contains 1

C2 domain.,similarity:Contains 1 EF-hand domain.,similarity:Contains 1 PH domain.,similarity:Contains 1 PI-PLC X-box domain.,similarity:Contains 1 PI-PLC Y-box domain.,similarity:Contains 1 SH3 domain.,simil

Subcellular Location :

Cell projection, lamellipodium . Cell projection, ruffle . Rapidly redistributed to ruffles and lamellipodia structures in response to epidermal growth factor (EGF) treatment. .

Expression :

Brain,Epithelium,Testis,Vein,

Tag :

orthogonal

Sort :

12827

No2 :

14008S

No4 :

1

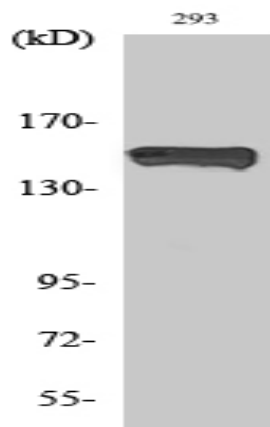
Host :

Rabbit

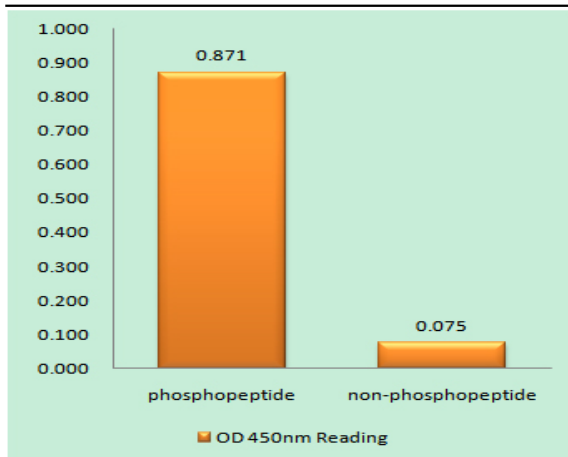
Modifications :

Phospho

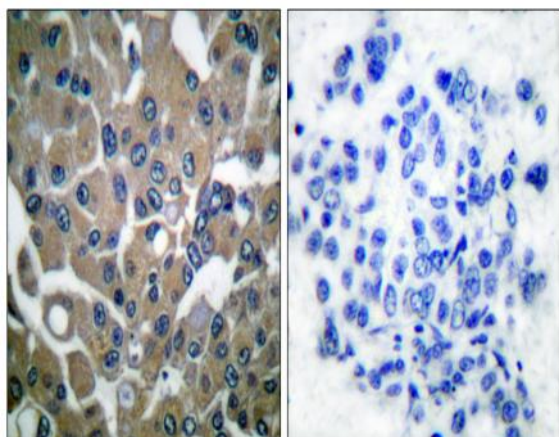
Products Images



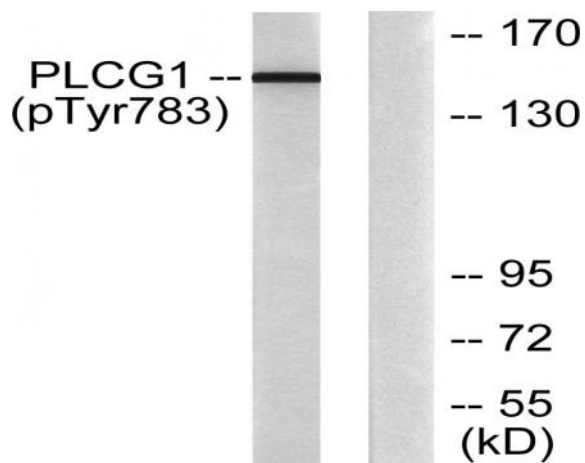
Western Blot analysis of various cells using Phospho-PLC γ 1 (Y783) Polyclonal Antibody



Enzyme-Linked Immunosorbent Assay (Phospho-ELISA) for Immunogen Phosphopeptide (Phospho-left) and Non-Phosphopeptide (Phospho-right), using PLCG1 (Phospho-Tyr783) Antibody



Immunohistochemistry analysis of paraffin-embedded human breast carcinoma, using PLCG1 (Phospho-Tyr783) Antibody. The picture on the right is blocked with the phospho peptide.



Western blot analysis of lysates from COS7 cells treated with EGF 200ng/ml 30', using PLCG1 (Phospho-Tyr783) Antibody. The lane on the right is blocked with the phospho peptide.