

Myf-5 (phospho Ser49) Polyclonal Antibody

Catalog No :	YP0395
Reactivity :	Human;Mouse
Applications :	WB;IHC;IF;ELISA
Target :	Myf-5
Fields :	>>Signaling pathways regulating pluripotency of stem cells
Gene Name :	MYF5
Protein Name :	Myogenic factor 5
Human Gene Id :	4617
Human Swiss Prot No :	P13349
Mouse Gene Id :	17877
Mouse Swiss Prot No :	P24699
Immunogen :	The antiserum was produced against synthesized peptide derived from human Myogenic Factor 5 around the phosphorylation site of Ser49. AA range:21-70
Specificity :	Phospho-Myf-5 (S49) Polyclonal Antibody detects endogenous levels of Myf-5 protein only when phosphorylated at S49.
Formulation :	Liquid in PBS containing 50% glycerol, 0.5% BSA and 0.02% sodium azide.
Source :	Polyclonal, Rabbit,IgG
Dilution :	WB 1:500 - 1:2000. IHC 1:100 - 1:300. ELISA: 1:10000.. IF 1:50-200
Purification :	The antibody was affinity-purified from rabbit antiserum by affinity-chromatography using epitope-specific immunogen.
Concentration :	1 mg/ml

Storage Stability : -15°C to -25°C/1 year(Do not lower than -25°C)

Observed Band : 38kD

Background : function:Involved in muscle differentiation (myogenic factor). Induces fibroblasts to differentiate into myoblasts. Probable sequence specific DNA-binding protein.,similarity:Contains 1 basic helix-loop-helix (bHLH) domain.,subunit:Efficient DNA binding requires dimerization with another bHLH protein.,

Function : function:Involved in muscle differentiation (myogenic factor). Induces fibroblasts to differentiate into myoblasts. Probable sequence specific DNA-binding protein.,similarity:Contains 1 basic helix-loop-helix (bHLH) domain.,subunit:Efficient DNA binding requires dimerization with another bHLH protein.,

Subcellular Location : Nucleus .

Expression : Skeletal muscle,

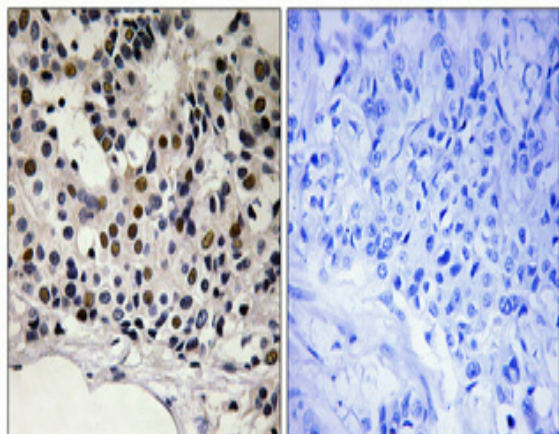
Sort : 10454

No4 : 1

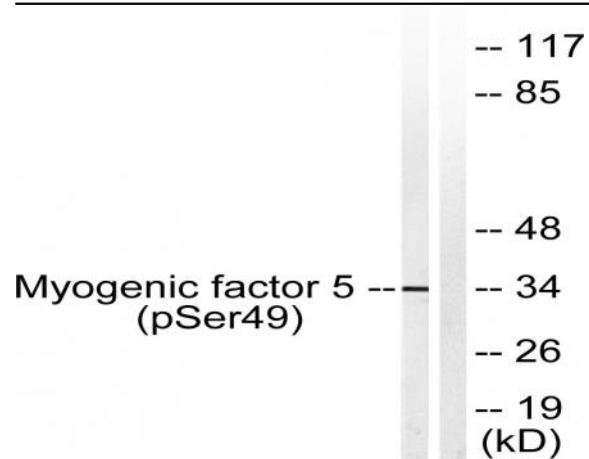
Host : Rabbit

Modifications : Phospho

Products Images



Immunohistochemical analysis of paraffin-embedded Human breast cancer. Antibody was diluted at 1:100(4° overnight). High-pressure and temperature Tris-EDTA,pH8.0 was used for antigen retrieval. Negative contrl (right) obtained from antibody was pre-absorbed by immunogen peptide.



Western blot analysis of lysates from HeLa cells, using Myogenic Factor 5 (Phospho-Ser49) Antibody. The lane on the right is blocked with the phospho peptide.