

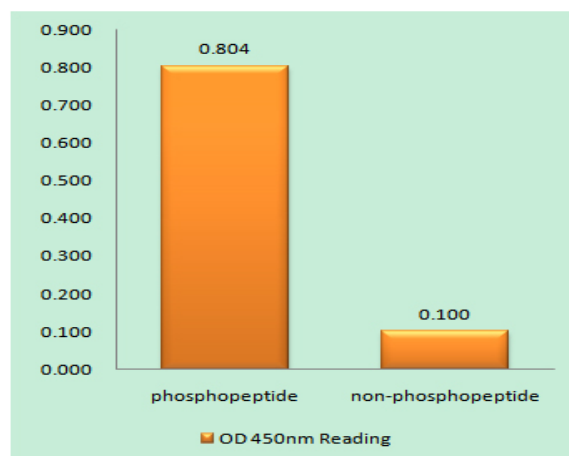
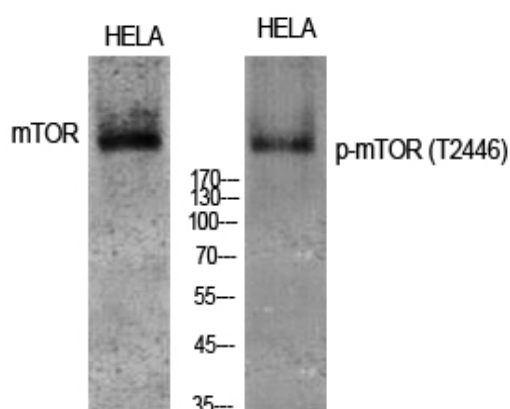
## mTOR (phospho Thr2446) Polyclonal Antibody

<b>Catalog No :</b>	YP0384
<b>Reactivity :</b>	Human;Mouse;Rat
<b>Applications :</b>	WB;ELISA;IHC
<b>Target :</b>	mTOR
<b>Fields :</b>	>>EGFR tyrosine kinase inhibitor resistance;>>Endocrine resistance;>>ErbB signaling pathway;>>HIF-1 signaling pathway;>>Phospholipase D signaling pathway;>>Autophagy - other;>>Autophagy - animal;>>mTOR signaling pathway;>>PI3K-Akt signaling pathway;>>AMPK signaling pathway;>>Longevity regulating pathway;>>Longevity regulating pathway - multiple species;>>Cellular senescence;>>Apelin signaling pathway;>>Neutrophil extracellular trap formation;>>JAK-STAT signaling pathway;>>Th17 cell differentiation;>>Thermogenesis;>>Insulin signaling pathway;>>Thyroid hormone signaling pathway;>>Adipocytokine signaling pathway;>>Type II diabetes mellitus;>>Insulin resistance;>>Growth hormone synthesis, secretion and action;>>Alzheimer disease;>>Amyotrophic lateral sclerosis;>>Huntington disease;>>Spinocerebellar ataxia;>>Pathways of neurodegeneration - multiple diseases;>>Shigellosis;>>Human cytomegalovirus infection;>>Human papillomavirus infection;>>Kaposi sarcoma-associated herpesvirus infection;>>He
<b>Gene Name :</b>	MTOR
<b>Protein Name :</b>	Serine/threonine-protein kinase mTOR
<b>Human Gene Id :</b>	2475
<b>Human Swiss Prot No :</b>	P42345
<b>Mouse Gene Id :</b>	56717
<b>Mouse Swiss Prot No :</b>	Q9JLN9
<b>Rat Gene Id :</b>	56718
<b>Rat Swiss Prot No :</b>	P42346

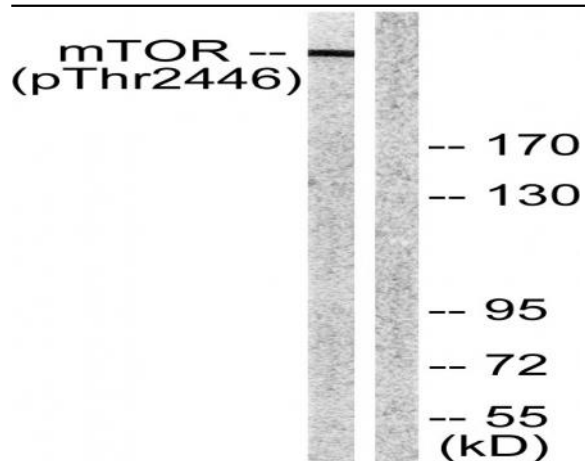
<b>Immunogen :</b>	The antiserum was produced against synthesized peptide derived from human mTOR around the phosphorylation site of Thr2446. AA range:2412-2461
<b>Specificity :</b>	Phospho-mTOR (T2446) Polyclonal Antibody detects endogenous levels of mTOR protein only when phosphorylated at T2446.
<b>Formulation :</b>	Liquid in PBS containing 50% glycerol, 0.5% BSA and 0.02% sodium azide.
<b>Source :</b>	Polyclonal, Rabbit,IgG
<b>Dilution :</b>	WB 1:500-2000;IHC 1:50-300; ELISA 2000-20000
<b>Purification :</b>	The antibody was affinity-purified from rabbit antiserum by affinity-chromatography using epitope-specific immunogen.
<b>Concentration :</b>	1 mg/ml
<b>Storage Stability :</b>	-15°C to -25°C/1 year(Do not lower than -25°C)
<b>Observed Band :</b>	220kD
<b>Cell Pathway :</b>	Regulates Angiogenesis; Insulin Receptor; ErbB/HER; mTOR; B Cell Receptor; PI3K/Akt; AMPK
<b>Background :</b>	The protein encoded by this gene belongs to a family of phosphatidylinositol kinase-related kinases. These kinases mediate cellular responses to stresses such as DNA damage and nutrient deprivation. This protein acts as the target for the cell-cycle arrest and immunosuppressive effects of the FKBP12-rapamycin complex. The ANGPTL7 gene is located in an intron of this gene. [provided by RefSeq, Sep 2008],
<b>Function :</b>	function:Acts as the target for the cell-cycle arrest and immunosuppressive effects of the FKBP12-rapamycin complex. Part of the TORC2 complex which plays a critical role in AKT1 Ser-473 phosphorylation, and may modulate the phosphorylation of PKCA and regulate actin cytoskeleton organization.,similarity:Belongs to the PI3/PI4-kinase family.,similarity:Contains 1 FAT domain.,similarity:Contains 1 FATC domain.,similarity:Contains 1 PI3K/PI4K domain.,similarity:Contains 7 HEAT repeats.,subunit:Interacts with the FKBP12-rapamycin complex. Binds UBQLN1. Forms part of the mammalian target of rapamycin 2 complex (TORC2) comprised of FRAP1, GBL, PRR5, RICTOR and SIN. TORC2 does not bind to and is not sensitive to FKBP12-rapamycin. Binds directly to PRR5 and RICTOR within the TORC2 complex.,tissue specificity:Expressed in numerous tissues, with highest levels in testis.,
<b>Subcellular</b>	Endoplasmic reticulum membrane ; Peripheral membrane protein ; Cytoplasmic

<b>Location :</b>	side . Golgi apparatus membrane ; Peripheral membrane protein ; Cytoplasmic side . Mitochondrion outer membrane ; Peripheral membrane protein ; Cytoplasmic side . Lysosome . Cytoplasm . Nucleus, PML body . Microsome membrane . Lysosome membrane . Cytoplasmic vesicle, phagosome . Shuttles between cytoplasm and nucleus. Accumulates in the nucleus in response to hypoxia (By similarity). Targeting to lysosomes depends on amino acid availability and RRAGA and RRAGB (PubMed:18497260, PubMed:20381137). Lysosome targeting also depends on interaction with MEAK7. Translocates to the lysosome membrane in the presence of TM4SF5 (PubMed:30956113). .
<b>Expression :</b>	Expressed in numerous tissues, with highest levels in testis.
<b>Tag :</b>	orthogonal
<b>Sort :</b>	10323
<b>No4 :</b>	1

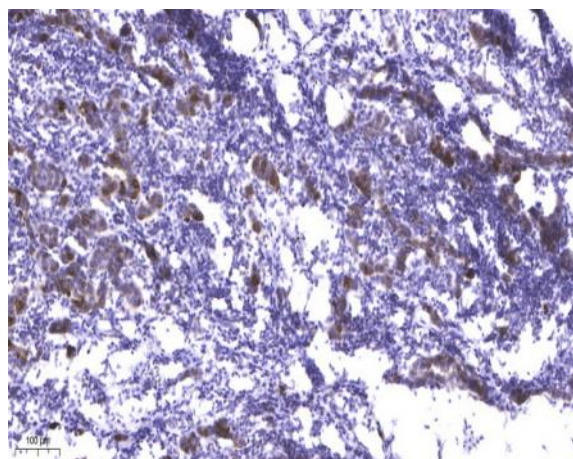
## Products Images



Enzyme-Linked Immunosorbent Assay (Phospho-ELISA) for Immunogen Phosphopeptide (Phospho-left) and Non-Phosphopeptide (Phospho-right), using mTOR (Phospho-Thr2446) Antibody



Western blot analysis of lysates from NIH/3T3 cells treated with Insulin 0.01U/ml 15', using mTOR (Phospho-Thr2446) Antibody. The lane on the right is blocked with the phospho peptide.



Immunohistochemical analysis of paraffin-embedded human Breast cancer. 1, Antibody was diluted at 1:200(4° overnight). 2, Tris-EDTA,pH9.0 was used for antigen retrieval. 3,Secondary antibody was diluted at 1:200(room temperature, 45min).