

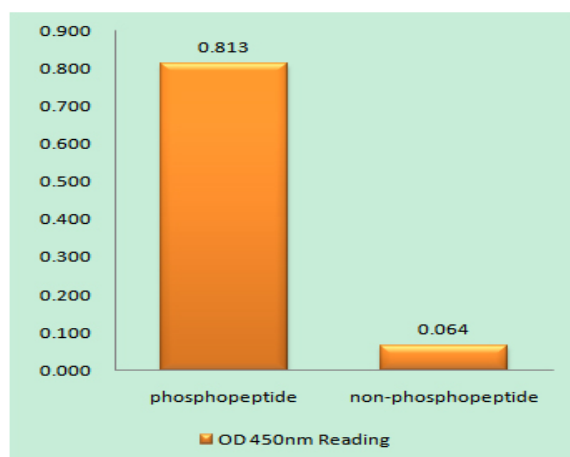
eNOS (phospho Ser615) Polyclonal Antibody

| | |
|------------------------------|--|
| Catalog No : | YP0381 |
| Reactivity : | Human;Mouse;Rat |
| Applications : | WB;ELISA |
| Target : | NOS3 |
| Fields : | >>Arginine biosynthesis;>>Arginine and proline metabolism;>>Metabolic pathways;>>Calcium signaling pathway;>>cGMP-PKG signaling pathway;>>HIF-1 signaling pathway;>>Sphingolipid signaling pathway;>>PI3K-Akt signaling pathway;>>VEGF signaling pathway;>>Apelin signaling pathway;>>Platelet activation;>>Estrogen signaling pathway;>>Oxytocin signaling pathway;>>Relaxin signaling pathway;>>Insulin resistance;>>AGE-RAGE signaling pathway in diabetic complications;>>Diabetic cardiomyopathy;>>Lipid and atherosclerosis;>>Fluid shear stress and atherosclerosis |
| Gene Name : | NOS3 |
| Protein Name : | Nitric oxide synthase endothelial |
| Human Gene Id : | 4846 |
| Human Swiss Prot No : | P29474 |
| Mouse Gene Id : | 18127 |
| Mouse Swiss Prot No : | P70313 |
| Rat Gene Id : | 24600 |
| Rat Swiss Prot No : | Q62600 |
| Immunogen : | The antiserum was produced against synthesized peptide derived from human eNOS around the phosphorylation site of Ser615. AA range:581-630 |
| Specificity : | Phospho-NOS3 (S615) Polyclonal Antibody detects endogenous levels of NOS3 protein only when phosphorylated at S615. |

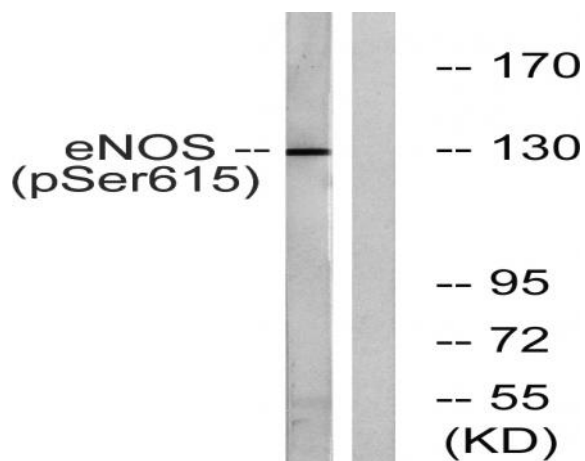
| | |
|-------------------------------|--|
| Formulation : | Liquid in PBS containing 50% glycerol, 0.5% BSA and 0.02% sodium azide. |
| Source : | Polyclonal, Rabbit,IgG |
| Dilution : | WB 1:500 - 1:2000. ELISA: 1:40000. Not yet tested in other applications. |
| Purification : | The antibody was affinity-purified from rabbit antiserum by affinity-chromatography using epitope-specific immunogen. |
| Concentration : | 1 mg/ml |
| Storage Stability : | -15°C to -25°C/1 year(Do not lower than -25°C) |
| Observed Band : | 130-140kD |
| Cell Pathway : | Regulates Angiogenesis; AMPK; Akt_PKB; Protein_Acetylation |
| Background : | Nitric oxide is a reactive free radical which acts as a biologic mediator in several processes, including neurotransmission and antimicrobial and antitumoral activities. Nitric oxide is synthesized from L-arginine by nitric oxide synthases. Variations in this gene are associated with susceptibility to coronary spasm. Multiple transcript variants encoding different isoforms have been found for this gene. [provided by RefSeq, May 2009], |
| Function : | catalytic activity:L-arginine + n NADPH + n H(+) + m O(2) = citrulline + nitric oxide + n NADP(+).,cofactor:binds 1 FAD.,cofactor:binds 1 FMN.,cofactor:heme group.,cofactor:tetrahydrobiopterin (BH4). May stabilize the dimeric form of the enzyme.,enzyme regulation:stimulated by calcium/calmodulin. inhibited by NOSIP and NOSTRIN.,function:produces nitric oxide (NO) which is implicated in vascular smooth muscle relaxation through a cGMP-mediated signal transduction pathway. NO mediates vascular endothelial growth factor (VEGF)-induced angiogenesis in coronary vessels and promotes blood clotting through the activation of platelets.,online information:nitric oxide synthase entry,polymorphism:variation in NOS3 seem to be associated with susceptibility to coronary spasm.,similarity:belongs to the NOS family.,similarity:contains 1 FAD-binding FR-type domain.,similarity:contains 1 flavodoxin-like |
| Subcellular Location : | Cell membrane. Membrane, caveola. Cytoplasm, cytoskeleton. Golgi apparatus. Specifically associates with actin cytoskeleton in the G2 phase of the cell cycle; which is favored by interaction with NOSIP and results in a reduced enzymatic activity. |
| Expression : | Platelets, placenta, liver and kidney. |
| Tag : | orthogonal |

| | |
|------------------------|---------|
| Sort : | 589 |
| No4 : | 1 |
| Host : | Rabbit |
| Modifications : | Phospho |

Products Images



Enzyme-Linked Immunosorbent Assay (Phospho-ELISA) for Immunogen Phosphopeptide (Phospho-left) and Non-Phosphopeptide (Phospho-right), using eNOS (Phospho-Ser615) Antibody



Western blot analysis of lysates from K562 cells treated with EGF 40nM 30', using eNOS (Phospho-Ser615) Antibody. The lane on the right is blocked with the phospho peptide.