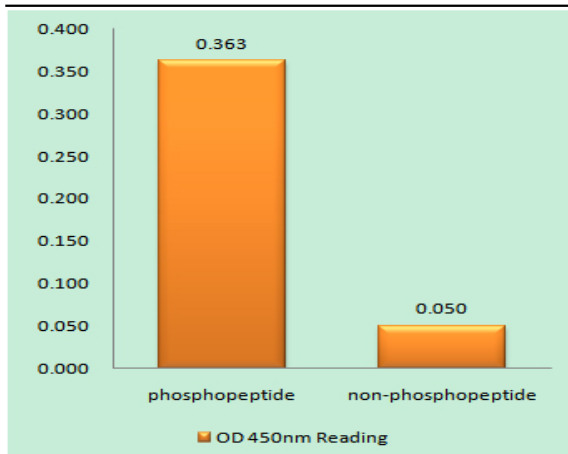


IL-10R α (phospho Tyr496) Polyclonal Antibody

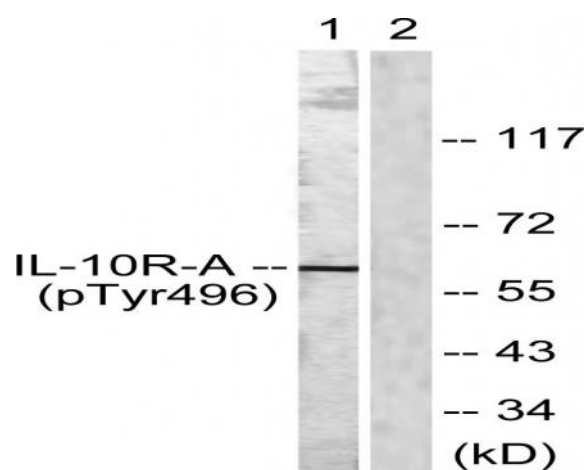
Catalog No :	YP0368
Reactivity :	Human;Rat;Mouse;
Applications :	WB;ELISA
Target :	IL-10R α
Fields :	>>Cytokine-cytokine receptor interaction;>>Viral protein interaction with cytokine and cytokine receptor;>>JAK-STAT signaling pathway;>>Toxoplasmosis;>>Tuberculosis;>>Human cytomegalovirus infection
Gene Name :	IL10RA
Protein Name :	Interleukin-10 receptor subunit alpha
Human Gene Id :	3587
Human Swiss Prot No :	Q13651
Mouse Swiss Prot No :	Q61727
Immunogen :	The antiserum was produced against synthesized peptide derived from human IL-10R alpha around the phosphorylation site of Tyr496. AA range:462-511
Specificity :	Phospho-IL-10R α (Y496) Polyclonal Antibody detects endogenous levels of IL-10R α protein only when phosphorylated at Y496.
Formulation :	Liquid in PBS containing 50% glycerol, 0.5% BSA and 0.02% sodium azide.
Source :	Polyclonal, Rabbit,IgG
Dilution :	WB 1:500 - 1:2000. ELISA: 1:20000. Not yet tested in other applications.
Purification :	The antibody was affinity-purified from rabbit antiserum by affinity-chromatography using epitope-specific immunogen.
Concentration :	1 mg/ml

Storage Stability :	<u>-15°C to -25°C/1 year(Do not lower than -25°C)</u>
Observed Band :	<u>63kD</u>
Cell Pathway :	<u>Cytokine-cytokine receptor interaction;Jak_STAT;</u>
Background :	<u>The protein encoded by this gene is a receptor for interleukin 10. This protein is structurally related to interferon receptors. It has been shown to mediate the immunosuppressive signal of interleukin 10, and thus inhibits the synthesis of proinflammatory cytokines. This receptor is reported to promote survival of progenitor myeloid cells through the insulin receptor substrate-2/PI 3-kinase/AKT pathway. Activation of this receptor leads to tyrosine phosphorylation of JAK1 and TYK2 kinases. Two transcript variants, one protein-coding and the other not protein-coding, have been found for this gene. [provided by RefSeq, Jan 2009],</u>
Function :	<u>function:Receptor for IL10; binds IL10 with a high affinity.,similarity:Belongs to the type II cytokine receptor family.,tissue specificity:Spleen, thymus, and PBMC. Weak expression in pancreas, skeletal muscle, brain, heart, and kidney. Placenta, lung, and liver showed intermediate levels. Monocytes, B-cells, large granular lymphocytes, and T-cells express high levels.,</u>
Subcellular Location :	<u>Cell membrane ; Single-pass type I membrane protein. Cytoplasm .</u>
Expression :	<u>Primarily expressed in hematopoietic cells including B-cells, T-cells, NK cells, monocytes and macrophages. Not expressed in non-hematopoietic cells such as fibroblasts or endothelial cells.</u>
Sort :	<u>8416</u>
No4 :	<u>1</u>
Host :	<u>Rabbit</u>
Modifications :	<u>Phospho</u>

Products Images



Enzyme-Linked Immunosorbent Assay (Phospho-ELISA) for Immunogen Phosphopeptide (Phospho-left) and Non-Phosphopeptide (Phospho-right), using IL-10R alpha (Phospho-Tyr496) Antibody



Western blot analysis of lysates from HUVEC cells, using IL-10R alpha (Phospho-Tyr496) Antibody. The lane on the right is blocked with the phospho peptide.