

**MCM4 (phospho Ser54) Polyclonal Antibody**

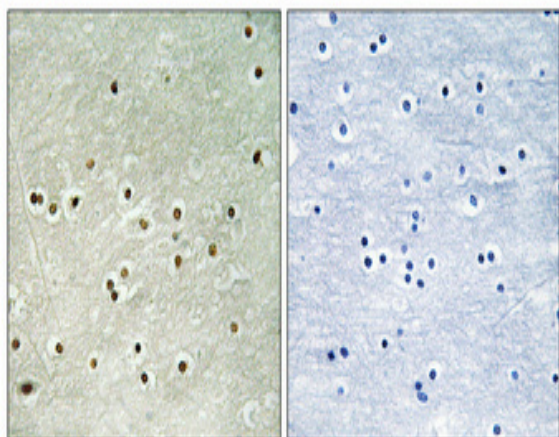
<b>Catalog No :</b>	YP0354
<b>Reactivity :</b>	Human;Mouse;Monkey
<b>Applications :</b>	WB;IHC;IF;ELISA
<b>Target :</b>	MCM4
<b>Fields :</b>	>>DNA replication;>>Cell cycle
<b>Gene Name :</b>	MCM4
<b>Protein Name :</b>	DNA replication licensing factor MCM4
<b>Human Gene Id :</b>	4173
<b>Human Swiss Prot No :</b>	P33991
<b>Mouse Gene Id :</b>	17217
<b>Mouse Swiss Prot No :</b>	P49717
<b>Immunogen :</b>	The antiserum was produced against synthesized peptide derived from human MCM4 around the phosphorylation site of Ser54. AA range:20-69
<b>Specificity :</b>	Phospho-MCM4 (S54) Polyclonal Antibody detects endogenous levels of MCM4 protein only when phosphorylated at S54.
<b>Formulation :</b>	Liquid in PBS containing 50% glycerol, 0.5% BSA and 0.02% sodium azide.
<b>Source :</b>	Polyclonal, Rabbit,IgG
<b>Dilution :</b>	WB 1:500 - 1:2000. IHC 1:100 - 1:300. ELISA: 1:20000.. IF 1:50-200
<b>Purification :</b>	The antibody was affinity-purified from rabbit antiserum by affinity-chromatography using epitope-specific immunogen.
<b>Concentration :</b>	1 mg/ml

---

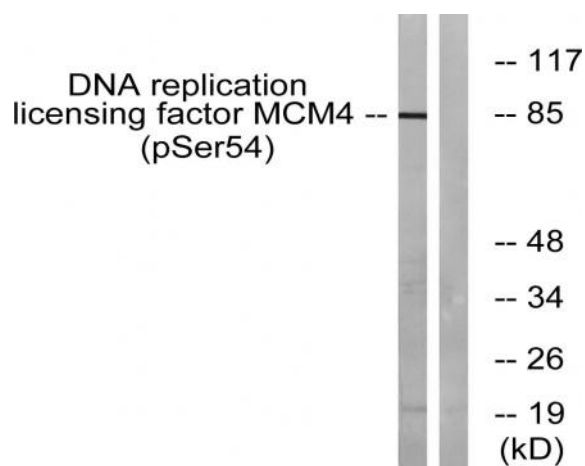
<b>Storage Stability :</b>	-15°C to -25°C/1 year(Do not lower than -25°C)
<b>Observed Band :</b>	85kD
<b>Cell Pathway :</b>	DNA replication;Cell_Cycle_G1S;Cell_Cycle_G2M_DNA;
<b>Background :</b>	<p>The protein encoded by this gene is one of the highly conserved mini-chromosome maintenance proteins (MCM) that are essential for the initiation of eukaryotic genome replication. The hexameric protein complex formed by MCM proteins is a key component of the pre-replication complex (pre_RC) and may be involved in the formation of replication forks and in the recruitment of other DNA replication related proteins. The MCM complex consisting of this protein and MCM2, 6 and 7 proteins possesses DNA helicase activity, and may act as a DNA unwinding enzyme. The phosphorylation of this protein by CDC2 kinase reduces the DNA helicase activity and chromatin binding of the MCM complex. This gene is mapped to a region on the chromosome 8 head-to-head next to the PRKDC/DNA-PK, a DNA-activated protein kinase involved in the repair of DNA double-strand breaks. Alternatively spliced transcri</p>
<b>Function :</b>	function:Involved in the control of DNA replication.,similarity:Belongs to the MCM family.,similarity:Contains 1 MCM domain.,
<b>Subcellular Location :</b>	Nucleus . Chromosome . Associated with chromatin before the formation of nuclei and detaches from it as DNA replication progresses. .
<b>Expression :</b>	Cervix,Epithelium,Testis,
<b>Tag :</b>	orthogonal
<b>Sort :</b>	9466
<b>No4 :</b>	1
<b>Host :</b>	Rabbit
<b>Modifications :</b>	Phospho

---

## Products Images



Immunohistochemical analysis of paraffin-embedded Human brain. Antibody was diluted at 1:100(4° overnight). High-pressure and temperature Tris-EDTA,pH8.0 was used for antigen retrieval. Negative contrl (right) obtained from antibody was pre-absorbed by immunogen peptide.



Western blot analysis of lysates from COS7 cells treated with nocodazole 1ug/ml 16h, using MCM4 (Phospho-Ser54) Antibody. The lane on the right is blocked with the phospho peptide.