

Ron (phospho Ser1394) Polyclonal Antibody

Catalog No :	YP0346
Reactivity :	Human;Mouse
Applications :	WB;IHC
Target :	Ron
Fields :	>>Calcium signaling pathway
Gene Name :	MST1R
Protein Name :	Macrophage-stimulating protein receptor
Human Gene Id :	4486
Human Swiss Prot No :	Q04912
Mouse Gene Id :	19882
Mouse Swiss Prot No :	Q62190
Immunogen :	The antiserum was produced against synthesized peptide derived from human CD136/RON around the phosphorylation site of Ser1394. AA range:1351-1400
Specificity :	Phospho-Ron (S1394) Polyclonal Antibody detects endogenous levels of Ron protein only when phosphorylated at S1394.
Formulation :	Liquid in PBS containing 50% glycerol, 0.5% BSA and 0.02% sodium azide.
Source :	Polyclonal, Rabbit,IgG
Dilution :	WB 1:500-2000;IHC 1:50-300
Purification :	The antibody was affinity-purified from rabbit antiserum by affinity-chromatography using epitope-specific immunogen.
Concentration :	1 mg/ml

Storage Stability : -15°C to -25°C/1 year(Do not lower than -25°C)

Observed Band : 152kD

Background : This gene encodes a cell surface receptor for macrophage-stimulating protein (MSP) with tyrosine kinase activity. The mature form of this protein is a heterodimer of disulfide-linked alpha and beta subunits, generated by proteolytic cleavage of a single-chain precursor. The beta subunit undergoes tyrosine phosphorylation upon stimulation by MSP. This protein is expressed on the ciliated epithelia of the mucociliary transport apparatus of the lung, and together with MSP, thought to be involved in host defense. Alternative splicing generates multiple transcript variants encoding different isoforms that may undergo similar proteolytic processing. [provided by RefSeq, Jan 2016],

Function : catalytic activity:ATP + a [protein]-L-tyrosine = ADP + a [protein]-L-tyrosine phosphate.,function:Receptor for macrophage stimulating protein (MSP). Has a tyrosine-protein kinase activity.,PTM:Phosphorylated in response to ligand binding.,PTM:Proteolytic processing yields the two subunits.,similarity:Belongs to the protein kinase superfamily. Tyr protein kinase family.,similarity:Contains 1 protein kinase domain.,similarity:Contains 1 Sema domain.,similarity:Contains 3 IPT/TIG domains.,subunit:Heterodimer formed of an alpha chain and a beta chain which are disulfide linked. Binds PLXNB1. Associates with and is negatively regulated by HYAL2.,tissue specificity:Keratinocytes and lung.,

Subcellular Location : Membrane; Single-pass type I membrane protein.

Expression : Expressed in colon, skin, lung and bone marrow.

Tag : orthogonal,hot

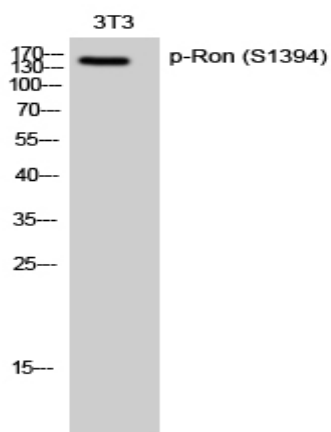
Sort : 14576

No4 : 1

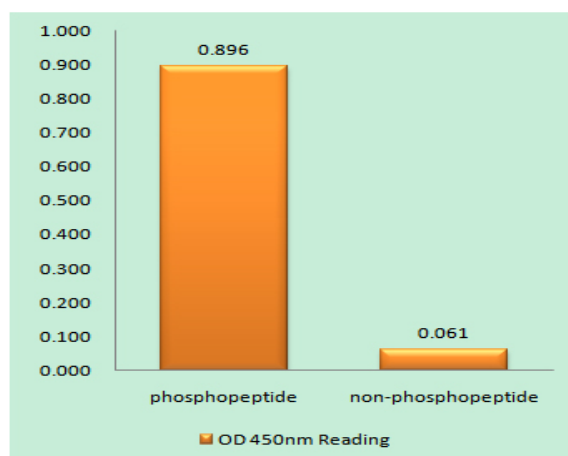
Host : Rabbit

Modifications : Phospho

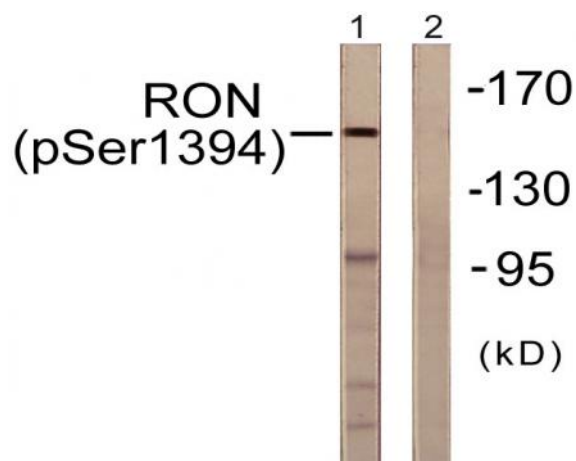
Products Images



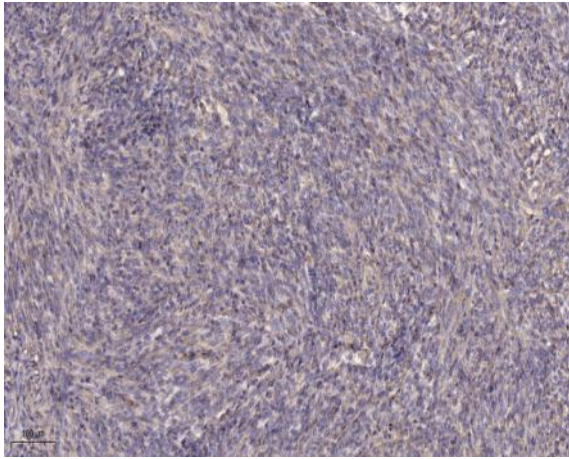
Western Blot analysis of 3T3 cells using Phospho-Ron (S1394) Polyclonal Antibody diluted at 1:500



Enzyme-Linked Immunosorbent Assay (Phospho-ELISA) for Immunogen Phosphopeptide (Phospho-left) and Non-Phosphopeptide (Phospho-right), using CD136/RON (Phospho-Ser1394) Antibody



Western blot analysis of lysates from HeLa cells treated with TNF- α 20ng/ml 2', using CD136/RON (Phospho-Ser1394) Antibody. The lane on the right is blocked with the phospho peptide.



Immunohistochemical analysis of paraffin-embedded human Colon cancer. 1, Antibody was diluted at 1:200(4° overnight). 2, Tris-EDTA,pH9.0 was used for antigen retrieval. 3,Secondary antibody was diluted at 1:200(room temperature, 45min).