

## IKK $\alpha$ (phospho Thr23) Polyclonal Antibody

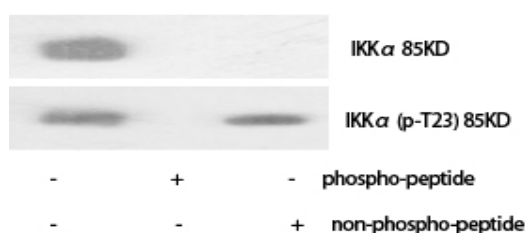
<b>Catalog No :</b>	YP0140
<b>Reactivity :</b>	Human;Mouse;Rat
<b>Applications :</b>	WB;IHC;IF;ELISA
<b>Target :</b>	IKK $\alpha$
<b>Fields :</b>	>>Antifolate resistance;>>MAPK signaling pathway;>>Ras signaling pathway;>>Chemokine signaling pathway;>>NF-kappa B signaling pathway;>>FoxO signaling pathway;>>mTOR signaling pathway;>>PI3K-Akt signaling pathway;>>Apoptosis;>>Osteoclast differentiation;>>Toll-like receptor signaling pathway;>>NOD-like receptor signaling pathway;>>RIG-I-like receptor signaling pathway;>>Cytosolic DNA-sensing pathway;>>C-type lectin receptor signaling pathway;>>IL-17 signaling pathway;>>Th1 and Th2 cell differentiation;>>Th17 cell differentiation;>>T cell receptor signaling pathway;>>B cell receptor signaling pathway;>>TNF signaling pathway;>>Adipocytokine signaling pathway;>>Alcoholic liver disease;>>Alzheimer disease;>>Epithelial cell signaling in Helicobacter pylori infection;>>Pathogenic Escherichia coli infection;>>Shigellosis;>>Salmonella infection;>>Yersinia infection;>>Chagas disease;>>Toxoplasmosis;>>Hepatitis C;>>Hepatitis B;>>Measles;>>Human cytomegalovirus infection;>>Influenza A;>>Human pap
<b>Gene Name :</b>	CHUK
<b>Protein Name :</b>	Inhibitor of nuclear factor kappa-B kinase subunit alpha
<b>Human Gene Id :</b>	1147
<b>Human Swiss Prot No :</b>	O15111
<b>Mouse Swiss Prot No :</b>	Q60680
<b>Immunogen :</b>	The antiserum was produced against synthesized peptide derived from human IKK-alpha around the phosphorylation site of Thr23. AA range:15-64
<b>Specificity :</b>	Phospho-IKK $\alpha$ (T23) Polyclonal Antibody detects endogenous levels of IKK $\alpha$ protein only when phosphorylated at T23.
<b>Formulation :</b>	Liquid in PBS containing 50% glycerol, 0.5% BSA and 0.02% sodium azide.

<b>Source :</b>	Polyclonal, Rabbit,IgG
<b>Dilution :</b>	WB 1:500 - 1:2000. IHC 1:100 - 1:300. ELISA: 1:5000.. IF 1:50-200
<b>Purification :</b>	The antibody was affinity-purified from rabbit antiserum by affinity-chromatography using epitope-specific immunogen.
<b>Concentration :</b>	1 mg/ml
<b>Storage Stability :</b>	-15°C to -25°C/1 year(Do not lower than -25°C)
<b>Molecularweight :</b>	85kD
<b>Cell Pathway :</b>	T_Cell_Receptor; Insulin Receptor; B_Cell_Antigen; Stem cell pathway; Toll_Like; MAPK_ERK_Growth;MAPK_G_Protein; PI3K/Akt; NF_kappaB; Protein_Acetylation
<b>Background :</b>	This gene encodes a member of the serine/threonine protein kinase family. The encoded protein, a component of a cytokine-activated protein complex that is an inhibitor of the essential transcription factor NF-kappa-B complex, phosphorylates sites that trigger the degradation of the inhibitor via the ubiquination pathway, thereby activating the transcription factor. [provided by RefSeq, Jul 2008],
<b>Function :</b>	catalytic activity:ATP + [I-kappa-B protein] = ADP + [I-kappa-B phosphoprotein].,enzyme regulation:Activated when phosphorylated and inactivated when dephosphorylated.,function:Acts as part of the IKK complex in the conventional pathway of NF-kappa-B activation and phosphorylates inhibitors of NF-kappa-B thus leading to the dissociation of the inhibitor/NF-kappa-B complex and ultimately the degradation of the inhibitor. As part of the non-canonical pathway of NF-kappa-B activation, the MAP3K14-activated CHUK/IKKA homodimer phosphorylates NFkB2/p100 associated with RelB, inducing its proteolytic processing to NFkB2/p52 and the formation of NF-kappa-B RelB-p52 complexes. Also phosphorylates NCOA3. Phosphorylates 'Ser-10' of histone H3 at NF-kappa-B-regulated promoters during inflammatory responses triggered by cytokines.,PTM:Phosphorylated by MAP3K14/NIK, AKT and to a lesser extent by MEKK
<b>Subcellular Location :</b>	Cytoplasm . Nucleus . Shuttles between the cytoplasm and the nucleus.
<b>Expression :</b>	Widely expressed.
<b>Tag :</b>	orthogonal
<b>Sort :</b>	8392

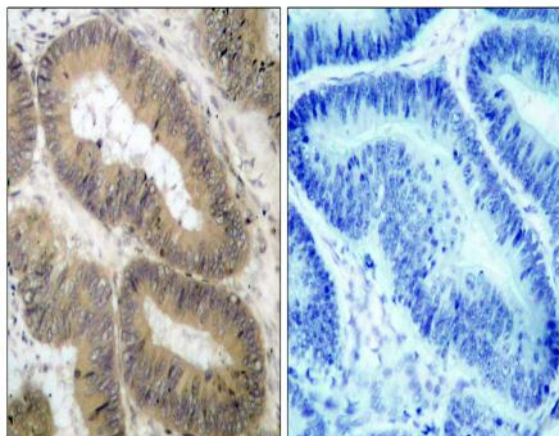
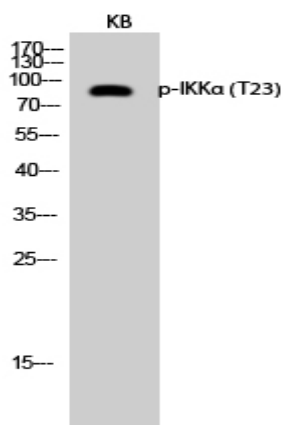
<b>No4 :</b>	1
<b>Host :</b>	Rabbit
<b>Modifications :</b>	Phospho

## Products Images

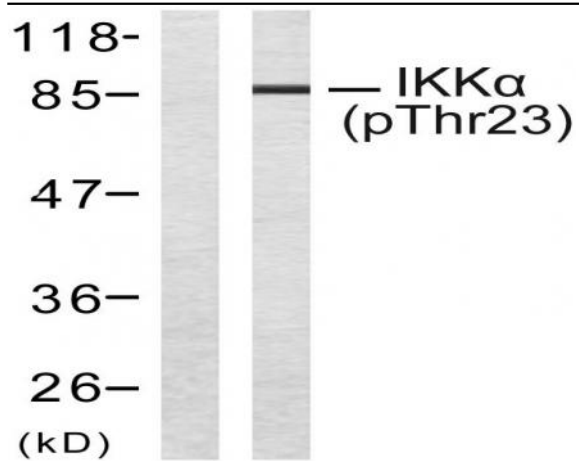
Western Blot analysis of various cells using Phospho-IKK $\alpha$  (T23) Polyclonal Antibody diluted at 1:1000



Western Blot analysis of KB cells using Phospho-IKK $\alpha$  (T23) Polyclonal Antibody diluted at 1:1000



Immunohistochemistry analysis of paraffin-embedded human colon carcinoma, using IKK-alpha (Phospho-Thr23) Antibody. The picture on the right is blocked with the phospho peptide.



Western blot analysis of lysates from MDA-MB-435 cells treated with EGF, using IKK-alpha (Phospho-Thr23) Antibody. The lane on the left is blocked with the phospho peptide.