

Flt3 (phospho Tyr599) Polyclonal Antibody

| | |
|------------------------------|--|
| Catalog No : | YP0304 |
| Reactivity : | Human;Mouse;Monkey |
| Applications : | WB;ELISA |
| Target : | Flt3 |
| Fields : | >>MAPK signaling pathway;>>Ras signaling pathway;>>PI3K-Akt signaling pathway;>>Hematopoietic cell lineage;>>Pathways in cancer;>>Transcriptional misregulation in cancer;>>Acute myeloid leukemia;>>Central carbon metabolism in cancer |
| Gene Name : | FLT3 |
| Protein Name : | Receptor-type tyrosine-protein kinase FLT3 |
| Human Gene Id : | 2322 |
| Human Swiss Prot No : | P36888 |
| Mouse Gene Id : | 14255 |
| Mouse Swiss Prot No : | Q00342 |
| Immunogen : | The antiserum was produced against synthesized peptide derived from human FLT3 around the phosphorylation site of Tyr599. AA range:565-614 |
| Specificity : | Phospho-Flt3 (Y599) Polyclonal Antibody detects endogenous levels of Flt3 protein only when phosphorylated at Y599. |
| Formulation : | Liquid in PBS containing 50% glycerol, 0.5% BSA and 0.02% sodium azide. |
| Source : | Polyclonal, Rabbit,IgG |
| Dilution : | WB 1:500 - 1:2000. ELISA: 1:5000. Not yet tested in other applications. |
| Purification : | The antibody was affinity-purified from rabbit antiserum by affinity- |

chromatography using epitope-specific immunogen.

Concentration : 1 mg/ml

Storage Stability : -15°C to -25°C/1 year(Do not lower than -25°C)

Observed Band : 160kD

Cell Pathway : Cytokine-cytokine receptor interaction;Hematopoietic cell lineage;Pathways in cancer;Acute myeloid leukemia;

Background : This gene encodes a class III receptor tyrosine kinase that regulates hematopoiesis. This receptor is activated by binding of the fms-related tyrosine kinase 3 ligand to the extracellular domain, which induces homodimer formation in the plasma membrane leading to autophosphorylation of the receptor. The activated receptor kinase subsequently phosphorylates and activates multiple cytoplasmic effector molecules in pathways involved in apoptosis, proliferation, and differentiation of hematopoietic cells in bone marrow. Mutations that result in the constitutive activation of this receptor result in acute myeloid leukemia and acute lymphoblastic leukemia. [provided by RefSeq, Jan 2015],

Function : catalytic activity:ATP + a [protein]-L-tyrosine = ADP + a [protein]-L-tyrosine phosphate.,function:Receptor for the FL cytokine. Has a tyrosine-protein kinase activity.,similarity:Belongs to the protein kinase superfamily. Tyr protein kinase family.,similarity:Belongs to the protein kinase superfamily. Tyr protein kinase family. CSF-1/PDGF receptor subfamily.,similarity:Contains 1 Ig-like C2-type (immunoglobulin-like) domain.,similarity:Contains 1 protein kinase domain.,subunit:Interacts with FIZ1 following ligand activation.,tissue specificity:Bone marrow cells.,

Subcellular Location : Membrane; Single-pass type I membrane protein. Endoplasmic reticulum lumen. Constitutively activated mutant forms with internal tandem duplications are less efficiently transported to the cell surface and a significant proportion is retained in an immature form in the endoplasmic reticulum lumen. The activated kinase is rapidly targeted for degradation.

Expression : Detected in bone marrow, in hematopoietic stem cells, in myeloid progenitor cells and in granulocyte/macrophage progenitor cells (at protein level). Detected in bone marrow, liver, thymus, spleen and lymph node, and at low levels in kidney and pancreas. Highly expressed in T-cell leukemia.

Tag : orthogonal

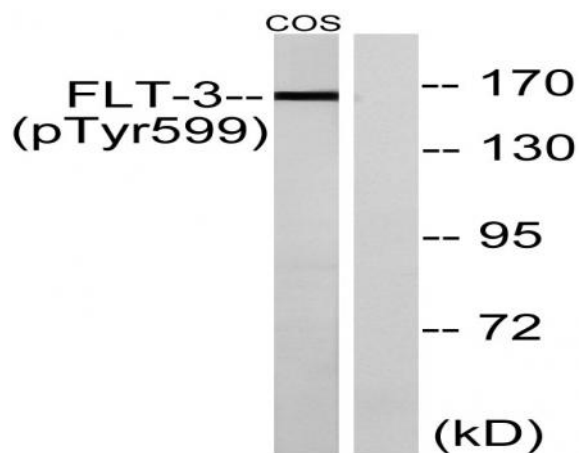
Sort : 6185

No4 : 1

Host : Rabbit

Modifications : Phospho

Products Images



Western blot analysis of lysates from COS7 cells treated with EGF 200ng/ml 30', using FLT3 (Phospho-Tyr599) Antibody. The lane on the right is blocked with the phospho peptide.