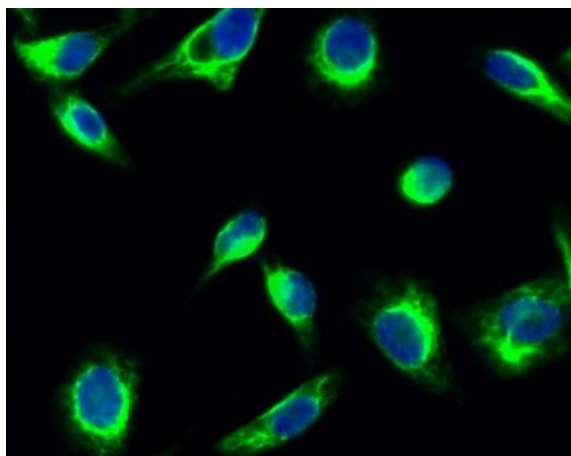


GSK3 α / β (phospho Tyr279/216) Polyclonal Antibody

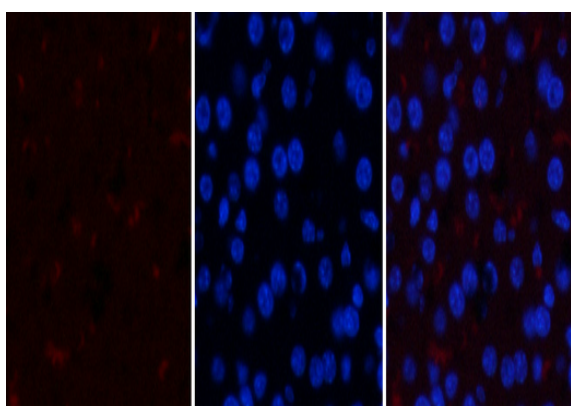
Catalog No :	YP0123
Reactivity :	Human;Mouse;Rat
Applications :	IF;WB;IHC;ELISA
Target :	GSK3 α / β
Fields :	>>Chemokine signaling pathway;>>Dopaminergic synapse;>>Non-alcoholic fatty liver disease;>>Shigellosis
Gene Name :	GSK3A/GSK3B
Protein Name :	Glycogen synthase kinase-3 alpha/beta
Human Gene Id :	2931
Human Swiss Prot No :	P49840/P49841
Mouse Gene Id :	606496/56637
Rat Gene Id :	50686/84027
Rat Swiss Prot No :	P18265/P18266
Immunogen :	The antiserum was produced against synthesized peptide derived from human GSK3 alpha/beta around the phosphorylation site of Tyr279/216. AA range:246-295
Specificity :	Phospho-GSK3 α / β (Y279/216) Polyclonal Antibody detects endogenous levels of GSK3 α / β protein only when phosphorylated at Y279/216.
Formulation :	Liquid in PBS containing 50% glycerol, 0.5% BSA and 0.02% sodium azide.
Source :	Polyclonal, Rabbit,IgG
Dilution :	IF 1:50-200 WB 1:500 - 1:2000. IHC 1:100 - 1:300. ELISA: 1:20000. Not yet tested in other applications.

Purification :	The antibody was affinity-purified from rabbit antiserum by affinity-chromatography using epitope-specific immunogen.
Concentration :	1 mg/ml
Storage Stability :	-15°C to -25°C/1 year(Do not lower than -25°C)
Observed Band :	51,46kD
Cell Pathway :	Chemokine;
Background :	glycogen synthase kinase 3 alpha(GSK3A) Homo sapiens This gene encodes a multifunctional Ser/Thr protein kinase that is implicated in the control of several regulatory proteins including glycogen synthase, and transcription factors, such as JUN. It also plays a role in the WNT and PI3K signaling pathways, as well as regulates the production of beta-amyloid peptides associated with Alzheimer's disease. [provided by RefSeq, Oct 2011],
Function :	catalytic activity:ATP + [tau protein] = ADP + [tau protein] phosphate.,function:Implicated in the hormonal control of several regulatory proteins including glycogen synthase, MYB and the transcription factor JUN.,similarity:Belongs to the protein kinase superfamily.,similarity:Belongs to the protein kinase superfamily. CMGC Ser/Thr protein kinase family. GSK-3 subfamily.,similarity:Contains 1 protein kinase domain.,subunit:Monomer.,
Subcellular Location :	apical dendrite;axon;beta-catenin destruction complex;cytoplasm;cytosol;mitochondrion;neuronal cell body;nucleus;postsynapse;proximal dendrite;
Expression :	Brain,Eye,Foreskin,Lung,Pancreas,Platelet,Testis,
Tag :	orthogonal,hot
Sort :	1
No3 :	ab68476
No4 :	1
Host :	Rabbit
Modifications :	Phospho

Products Images



Immunofluorescence analysis of Hela cell. 1, GSK3 α/β (phospho Tyr279/216) Polyclonal Antibody (green) was diluted at 1:200 (4 $^{\circ}$ C overnight). 2, Goat Anti Rabbit Alexa Fluor 488 Catalog: RS3211 was diluted at 1:1000 (room temperature, 50min). 3 DAPI (blue) 10min.

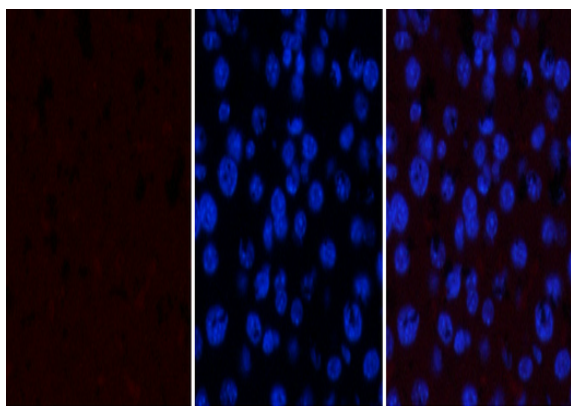


A

B

C

Immunofluorescence analysis of mouse-liver tissue. 1, GSK3 α/β (phospho Tyr279/216) Polyclonal Antibody (red) was diluted at 1:200 (4 $^{\circ}$ C, overnight). 2, Cy3 labeled Secondary antibody was diluted at 1:300 (room temperature, 50min). 3, Picture B: DAPI (blue) 10min. Picture A: Target. Picture C: merge of A+B

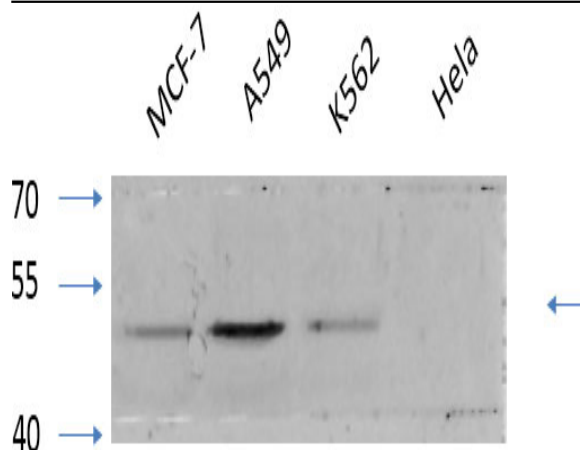


A

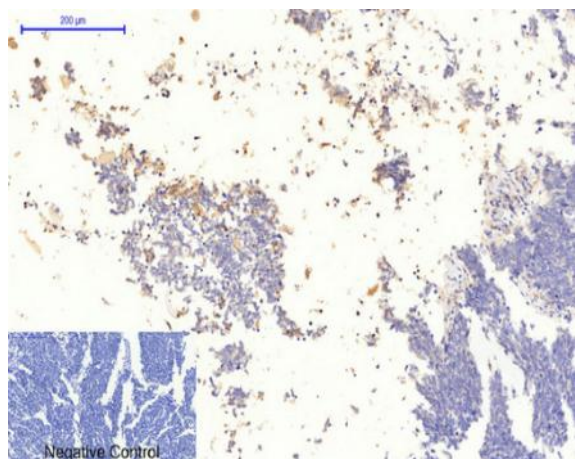
B

C

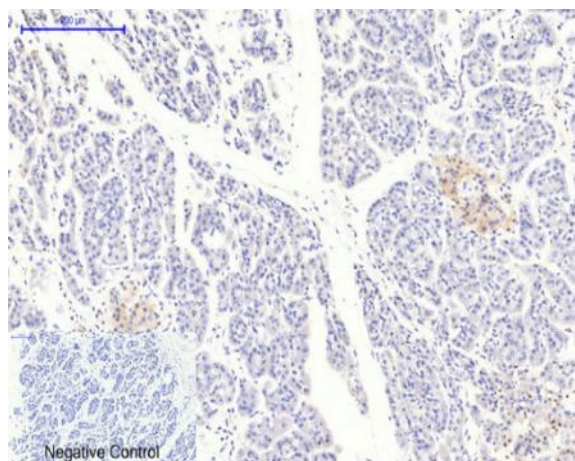
Immunofluorescence analysis of mouse-liver tissue. 1, GSK3 α/β (phospho Tyr279/216) Polyclonal Antibody (red) was diluted at 1:200 (4 $^{\circ}$ C, overnight). 2, Cy3 labeled Secondary antibody was diluted at 1:300 (room temperature, 50min). 3, Picture B: DAPI (blue) 10min. Picture A: Target. Picture C: merge of A+B



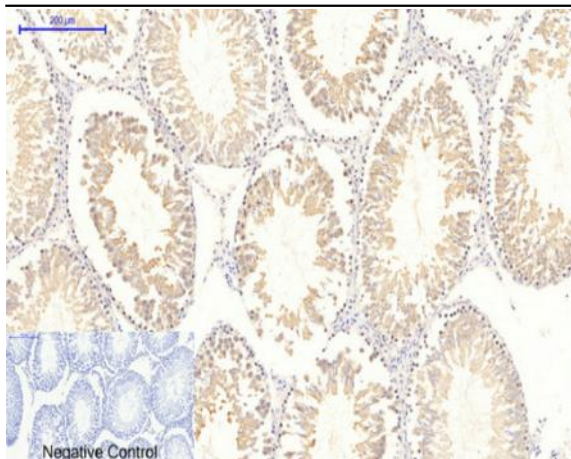
Western Blot analysis of various cells using primary antibody diluted at 1:1000(4 °C overnight). Secondary antibody:Goat Anti-rabbit IgG IRDye 800(diluted at 1:5000, 25 °C, 1 hour). Cell lysate was extracted by Minute™ Plasma Membrane Protein Isolation and Cell Fractionation Kit(SM-005, Inventbiotech,MN,USA).



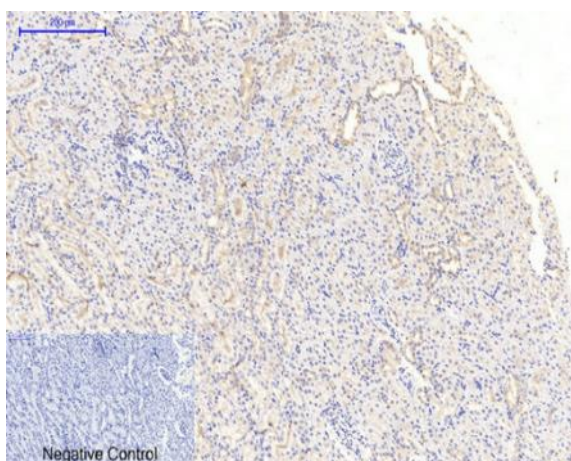
Immunohistochemical analysis of paraffin-embedded Human-lung-cancer tissue. 1,GSK3α/β (phospho Tyr279/216) Polyclonal Antibody was diluted at 1:200(4 °C,overnight). 2, Sodium citrate pH 6.0 was used for antibody retrieval(>98 °C,20min). 3,Secondary antibody was diluted at 1:200(room tempeRature, 30min). Negative control was used by secondary antibody only.



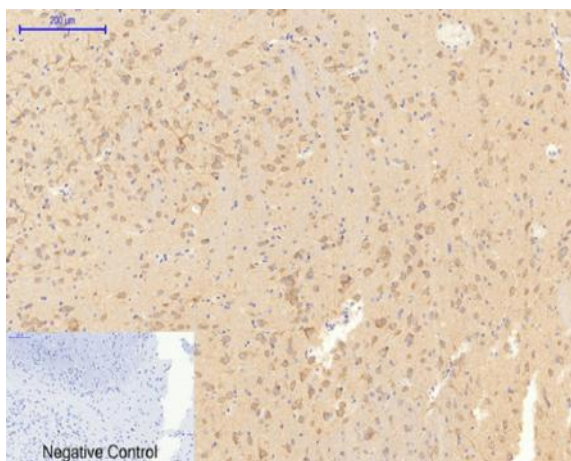
Immunohistochemical analysis of paraffin-embedded Human-stomach-cancer tissue. 1,GSK3α/β (phospho Tyr279/216) Polyclonal Antibody was diluted at 1:200(4 °C,overnight). 2, Sodium citrate pH 6.0 was used for antibody retrieval(>98 °C,20min). 3,Secondary antibody was diluted at 1:200(room tempeRature, 30min). Negative control was used by secondary antibody only.



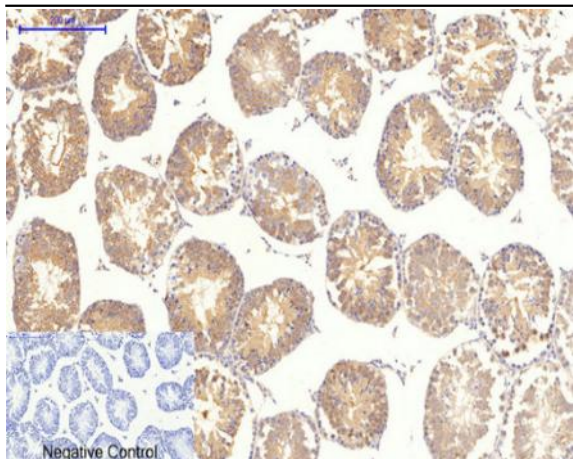
Immunohistochemical analysis of paraffin-embedded Rat-testis tissue. 1, GSK3 α/β (phospho Tyr279/216) Polyclonal Antibody was diluted at 1:200 (4 °C, overnight). 2, Sodium citrate pH 6.0 was used for antibody retrieval (>98 °C, 20min). 3, Secondary antibody was diluted at 1:200 (room temperature, 30min). Negative control was used by secondary antibody only.



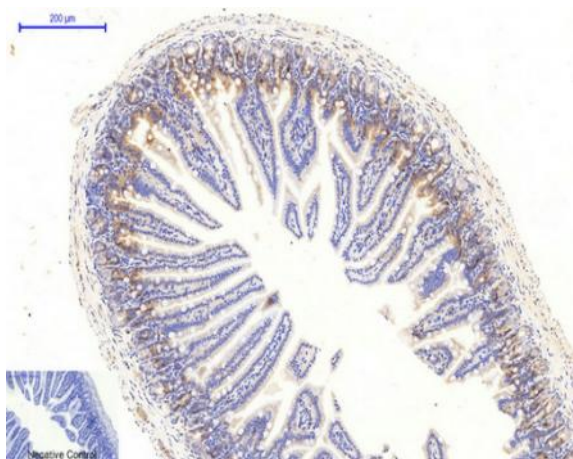
Immunohistochemical analysis of paraffin-embedded Rat-kidney tissue. 1, GSK3 α/β (phospho Tyr279/216) Polyclonal Antibody was diluted at 1:200 (4 °C, overnight). 2, Sodium citrate pH 6.0 was used for antibody retrieval (>98 °C, 20min). 3, Secondary antibody was diluted at 1:200 (room temperature, 30min). Negative control was used by secondary antibody only.



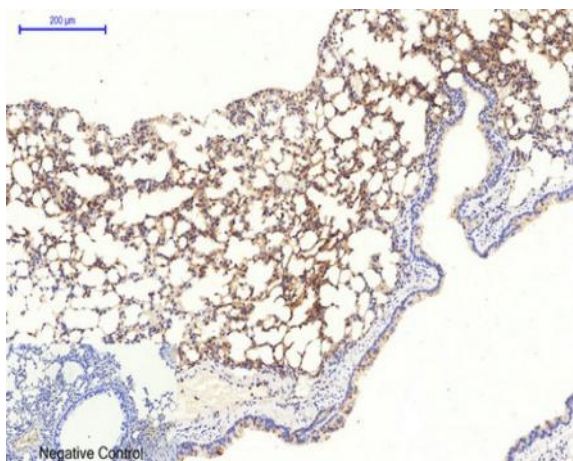
Immunohistochemical analysis of paraffin-embedded Rat-brain tissue. 1, GSK3 α/β (phospho Tyr279/216) Polyclonal Antibody was diluted at 1:200 (4 °C, overnight). 2, Sodium citrate pH 6.0 was used for antibody retrieval (>98 °C, 20min). 3, Secondary antibody was diluted at 1:200 (room temperature, 30min). Negative control was used by secondary antibody only.



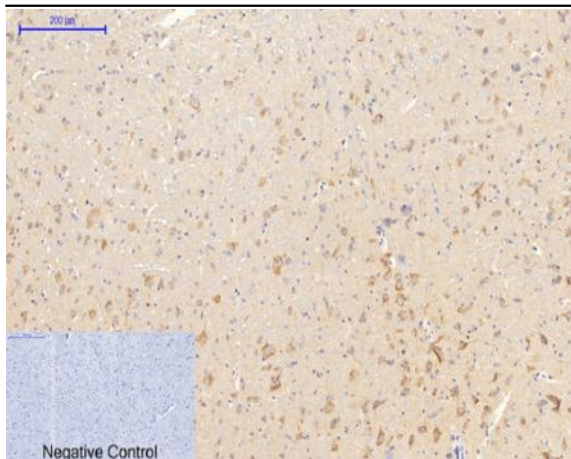
Immunohistochemical analysis of paraffin-embedded Mouse-testis tissue. 1, GSK3 α/β (phospho Tyr279/216) Polyclonal Antibody was diluted at 1:200 (4 °C, overnight). 2, Sodium citrate pH 6.0 was used for antibody retrieval (>98 °C, 20min). 3, Secondary antibody was diluted at 1:200 (room temperature, 30min). Negative control was used by secondary antibody only.



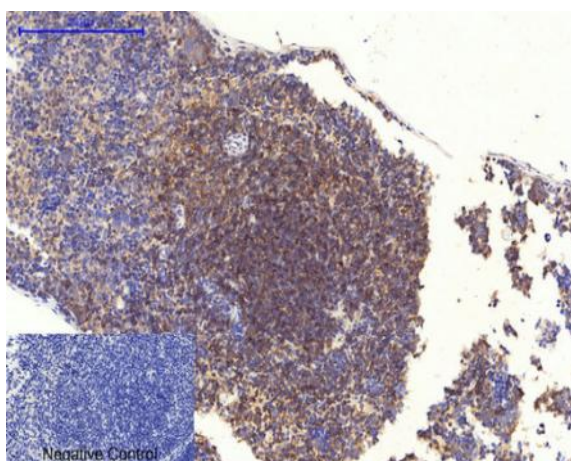
Immunohistochemical analysis of paraffin-embedded Mouse-colon tissue. 1, GSK3 α/β (phospho Tyr279/216) Polyclonal Antibody was diluted at 1:200 (4 °C, overnight). 2, Sodium citrate pH 6.0 was used for antibody retrieval (>98 °C, 20min). 3, Secondary antibody was diluted at 1:200 (room temperature, 30min). Negative control was used by secondary antibody only.



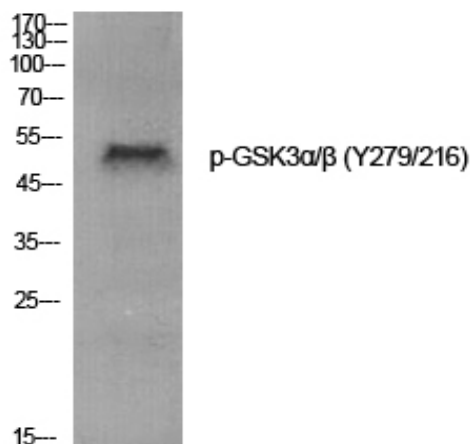
Immunohistochemical analysis of paraffin-embedded Mouse-lung tissue. 1, GSK3 α/β (phospho Tyr279/216) Polyclonal Antibody was diluted at 1:200 (4 °C, overnight). 2, Sodium citrate pH 6.0 was used for antibody retrieval (>98 °C, 20min). 3, Secondary antibody was diluted at 1:200 (room temperature, 30min). Negative control was used by secondary antibody only.



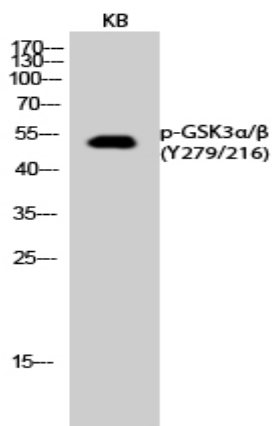
Immunohistochemical analysis of paraffin-embedded Mouse-brain tissue. 1, GSK3 α/β (phospho Tyr279/216) Polyclonal Antibody was diluted at 1:200 (4 °C, overnight). 2, Sodium citrate pH 6.0 was used for antibody retrieval (>98 °C, 20min). 3, Secondary antibody was diluted at 1:200 (room temperature, 30min). Negative control was used by secondary antibody only.



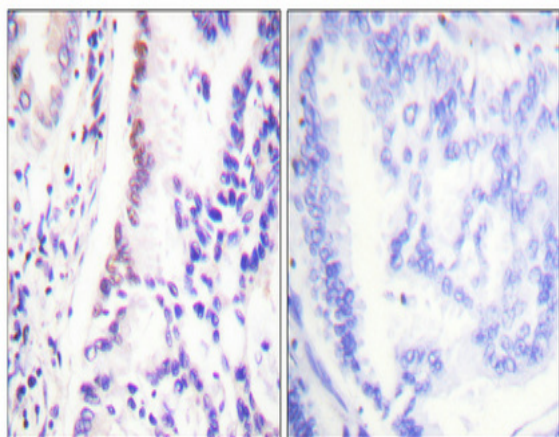
Immunohistochemical analysis of paraffin-embedded Mouse-spleen tissue. 1, GSK3 α/β (phospho Tyr279/216) Polyclonal Antibody was diluted at 1:200 (4 °C, overnight). 2, Sodium citrate pH 6.0 was used for antibody retrieval (>98 °C, 20min). 3, Secondary antibody was diluted at 1:200 (room temperature, 30min). Negative control was used by secondary antibody only.



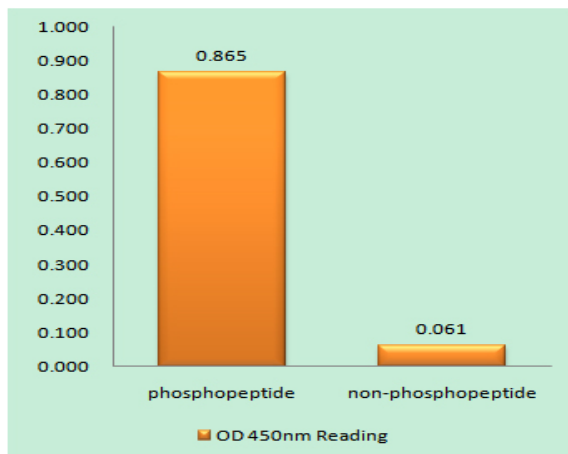
Western Blot analysis of various cells using Phospho-GSK3 α/β (Y279/216) Polyclonal Antibody



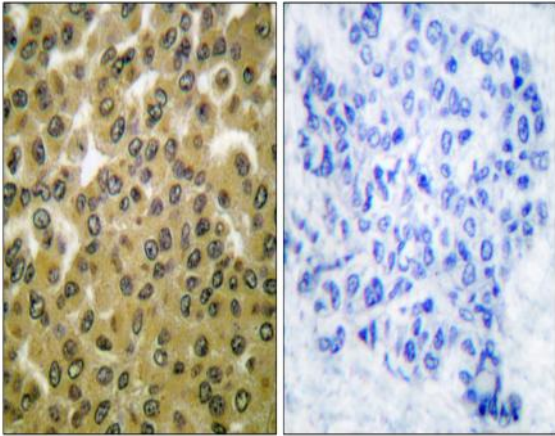
Western Blot analysis of KB cells using Phospho-GSK3α/β (Y279/216) Polyclonal Antibody



Immunohistochemical analysis of paraffin-embedded Human lung cancer. Antibody was diluted at 1:100(4° overnight). High-pressure and temperature Tris-EDTA, pH8.0 was used for antigen retrieval. Negative control (right) obtained from antibody was pre-absorbed by immunogen peptide.



Enzyme-Linked Immunosorbent Assay (Phospho-ELISA) for Immunogen Phosphopeptide (Phospho-left) and Non-Phosphopeptide (Phospho-right), using GSK3 alpha/beta (Phospho-Tyr279/216) Antibody



Immunohistochemistry analysis of paraffin-embedded human breast carcinoma, using GSK3 alpha/beta (Phospho-Tyr279/216) Antibody. The picture on the right is blocked with the phosphopeptide.