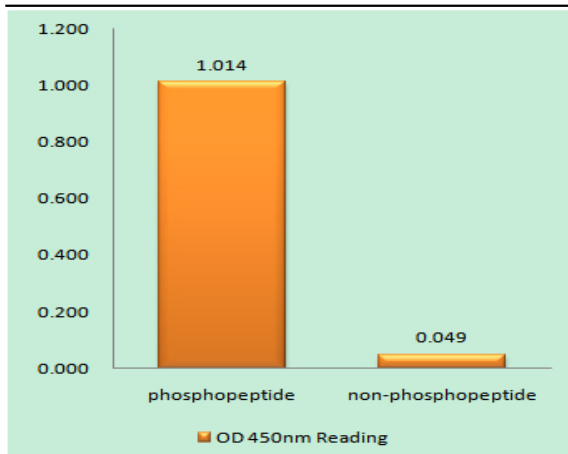


GAP-43 (phospho Ser41) Polyclonal Antibody

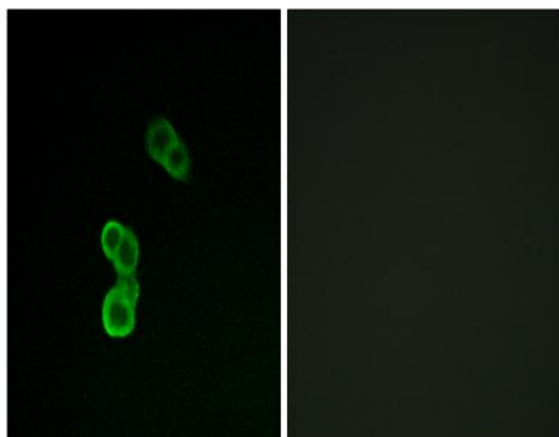
Catalog No :	YP0119
Reactivity :	Human;Mouse;Rat
Applications :	IF;ELISA
Target :	GAP-43
Gene Name :	GAP43
Protein Name :	Neuromodulin
Human Gene Id :	2596
Human Swiss Prot No :	P17677
Mouse Gene Id :	14432
Mouse Swiss Prot No :	P06837
Rat Gene Id :	29423
Rat Swiss Prot No :	P07936
Immunogen :	The antiserum was produced against synthesized peptide derived from human GAP43 around the phosphorylation site of Ser41. AA range:8-57
Specificity :	Phospho-GAP-43 (S41) Polyclonal Antibody detects endogenous levels of GAP-43 protein only when phosphorylated at S41.
Formulation :	Liquid in PBS containing 50% glycerol, 0.5% BSA and 0.02% sodium azide.
Source :	Polyclonal, Rabbit,IgG
Dilution :	IF 1:200 - 1:1000. ELISA: 1:20000. Not yet tested in other applications.
Purification :	The antibody was affinity-purified from rabbit antiserum by affinity-chromatography using epitope-specific immunogen.

Concentration :	1 mg/ml
Storage Stability :	-15°C to -25°C/1 year(Do not lower than -25°C)
Molecularweight :	25kD
Background :	The protein encoded by this gene has been termed a 'growth' or 'plasticity' protein because it is expressed at high levels in neuronal growth cones during development and axonal regeneration. This protein is considered a crucial component of an effective regenerative response in the nervous system. Alternatively spliced transcript variants encoding distinct isoforms have been found for this gene. [provided by RefSeq, Jul 2008],
Function :	function:This protein is associated with nerve growth. It is a major component of the motile "growth cones" that form the tips of elongating axons.,online information:Gap-43 entry,PTM:Phosphorylation of this protein by a protein kinase C is specifically correlated with certain forms of synaptic plasticity.,similarity:Belongs to the neuromodulin family.,similarity:Contains 1 IQ domain.,subcellular location:Cytoplasmic surface of growth cone and synaptic plasma membranes.,subunit:Binds calmodulin with a greater affinity in the absence of Ca(2+) than in its presence.,
Subcellular Location :	Cell membrane ; Peripheral membrane protein ; Cytoplasmic side . Cell projection, growth cone membrane ; Peripheral membrane protein ; Cytoplasmic side . Cell junction, synapse . Cell projection, filopodium membrane ; Peripheral membrane protein . Perikaryon . Cell projection, dendrite . Cell projection, axon . Cytoplasm . Cytoplasmic surface of growth cone and synaptic plasma membranes. .
Expression :	Alzheimer cortex,Brain,Subthalamic nucleus,
Sort :	6431
No4 :	1
Host :	Rabbit
Modifications :	Phospho

Products Images



Enzyme-Linked Immunosorbent Assay (Phospho-ELISA) for Immunogen Phosphopeptide (Phospho-left) and Non-Phosphopeptide (Phospho-right), using GAP43 (Phospho-Ser41) Antibody



Immunofluorescence analysis of MCF-7 cells, using GAP43 (Phospho-Ser41) Antibody. The picture on the right is blocked with the phospho peptide.