

**Gab 1 (phospho Tyr627) Polyclonal Antibody**

<b>Catalog No :</b>	YP0118
<b>Reactivity :</b>	Human;Mouse;Monkey
<b>Applications :</b>	WB;ELISA
<b>Target :</b>	Gab 1
<b>Fields :</b>	>>EGFR tyrosine kinase inhibitor resistance;>>ErbB signaling pathway;>>Ras signaling pathway;>>Phospholipase D signaling pathway;>>Neurotrophin signaling pathway;>>Bacterial invasion of epithelial cells;>>Proteoglycans in cancer;>>Renal cell carcinoma;>>Hepatocellular carcinoma;>>Gastric cancer
<b>Gene Name :</b>	GAB1
<b>Protein Name :</b>	GRB2-associated-binding protein 1
<b>Human Gene Id :</b>	2549
<b>Human Swiss Prot No :</b>	Q13480
<b>Mouse Gene Id :</b>	14388
<b>Mouse Swiss Prot No :</b>	Q9QYY0
<b>Immunogen :</b>	The antiserum was produced against synthesized peptide derived from human GAB1 around the phosphorylation site of Tyr627 AA range:611-643
<b>Specificity :</b>	Phospho-Gab 1 (Y627) Polyclonal Antibody detects endogenous levels of Gab 1 protein only when phosphorylated at Y627.
<b>Formulation :</b>	Liquid in PBS containing 50% glycerol, 0.5% BSA and 0.02% sodium azide.
<b>Source :</b>	Polyclonal, Rabbit,IgG
<b>Dilution :</b>	WB 1:500 - 1:2000. ELISA: 1:10000. Not yet tested in other applications.
<b>Purification :</b>	The antibody was affinity-purified from rabbit antiserum by affinity-

chromatography using epitope-specific immunogen.

---

**Concentration :** 1 mg/ml

---

**Storage Stability :** -15°C to -25°C/1 year(Do not lower than -25°C)

---

**Observed Band :** 110kD

---

**Cell Pathway :** ErbB\_HER;Neurotrophin;Renal cell carcinoma;

---

**Background :** GRB2 associated binding protein 1(GAB1) Homo sapiens The protein encoded by this gene is a member of the IRS1-like multisubstrate docking protein family. It is an important mediator of branching tubulogenesis and plays a central role in cellular growth response, transformation and apoptosis. Two transcript variants encoding different isoforms have been found for this gene. [provided by RefSeq, Aug 2008],

---

**Function :** function:Probably involved in EGF and insulin receptor signaling.,PTM:Phosphorylated on tyrosine residue(s) by the epidermal growth factor receptor (EGFR) and the insulin receptor (INSR). Tyrosine phosphorylation of GAB1 mediates interaction with several proteins that contain SH2 domains.,similarity:Belongs to the GAB family.,similarity:Contains 1 PH domain.,subunit:Interacts with GRB2 and with other SH2-containing proteins. Interacts with phosphorylated LAT2.,

---

**Subcellular Location :** cytosol,

---

**Expression :** Testis,Whole embryo,

---

**Sort :** 6346

---

**No2 :** 3233T

---

**No4 :** 1

---

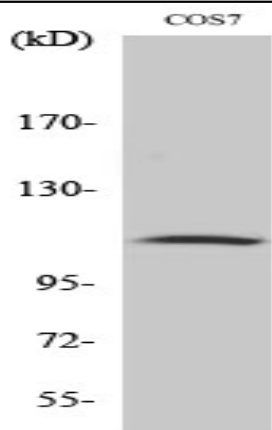
**Host :** Rabbit

---

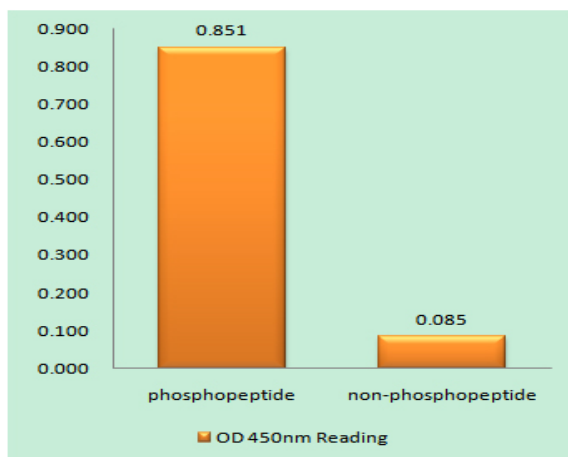
**Modifications :** Phospho

---

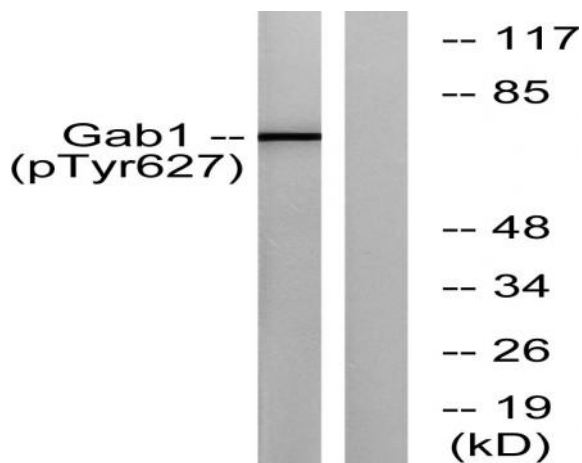
**Products Images**



Western Blot analysis of various cells using Phospho-Gab 1 (Y627) Polyclonal Antibody



Enzyme-Linked Immunosorbent Assay (Phospho-ELISA) for Immunogen Phosphopeptide (Phospho-left) and Non-Phosphopeptide (Phospho-right), using GAB1 (Phospho-Tyr627) Antibody



Western blot analysis of GAB1 (Phospho-Tyr627) Antibody. The lane on the right is blocked with the GAB1 (Phospho-Tyr627) peptide.