

## ZFP598 (phospho Tyr306) Polyclonal Antibody

<b>Catalog No :</b>	YP0278
<b>Reactivity :</b>	Human;Mouse
<b>Applications :</b>	WB;IHC;IF;ELISA
<b>Target :</b>	ZFP598
<b>Gene Name :</b>	ZNF598
<b>Protein Name :</b>	Zinc finger protein 598
<b>Human Gene Id :</b>	90850
<b>Human Swiss Prot No :</b>	Q86UK7
<b>Mouse Gene Id :</b>	213753
<b>Mouse Swiss Prot No :</b>	Q80YR4
<b>Immunogen :</b>	Synthesized phospho-peptide around the phosphorylation site of human ZFP598 (phospho Tyr306)
<b>Specificity :</b>	Phospho-ZFP598 (Y306) Polyclonal Antibody detects endogenous levels of ZFP598 protein only when phosphorylated at Y306.
<b>Formulation :</b>	Liquid in PBS containing 50% glycerol, 0.5% BSA and 0.02% sodium azide.
<b>Source :</b>	Polyclonal, Rabbit,IgG
<b>Dilution :</b>	WB 1:500 - 1:2000. IHC 1:100 - 1:300. ELISA: 1:10000.. IF 1:50-200
<b>Purification :</b>	The antibody was affinity-purified from rabbit antiserum by affinity-chromatography using epitope-specific immunogen.
<b>Concentration :</b>	1 mg/ml
<b>Storage Stability :</b>	-15°C to -25°C/1 year(Do not lower than -25°C)

**Observed Band :** 99kD

**Background :** zinc finger protein 598(ZNF598) Homo sapiens Zinc-finger proteins bind nucleic acids and play important roles in various cellular functions, including cell proliferation, differentiation, and apoptosis. This protein and Grb10-interacting GYF protein 2 have been identified as a components of the mammalian 4EHP (m4EHP) complex. The complex is thought to function as a translation repressor in embryonic development. [provided by RefSeq, Oct 2012],

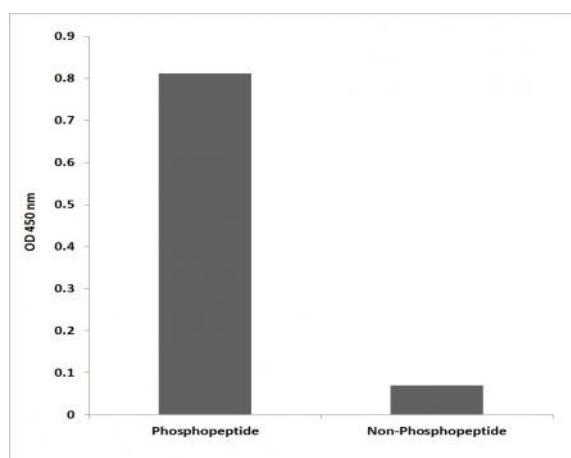
**Function :** similarity:Contains 1 C2H2-type zinc finger.,similarity:Contains 1 RING-type zinc finger.,

**Expression :** Lung,Melanoma,Skin,Spleen,T-cell,

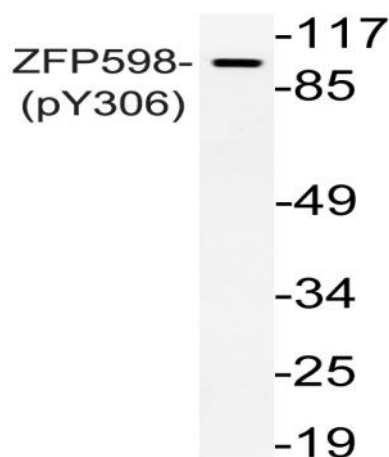
**Sort :** 24521

**No4 :** 1

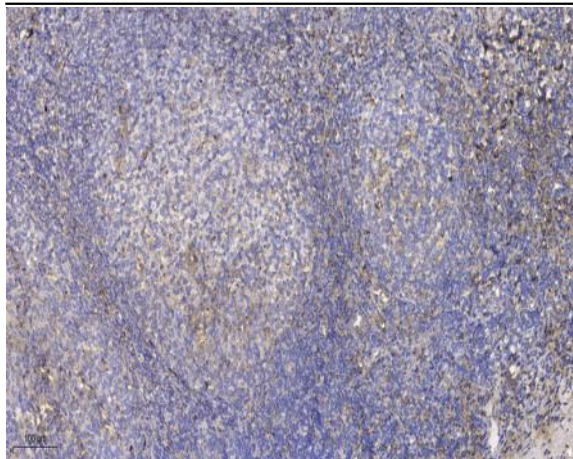
## Products Images



Enzyme-Linked Immunosorbent Assay (Phospho-ELISA) for Immunogen Phosphopeptide (Phospho-left) and Non-Phosphopeptide (Phospho-right), using ZFP598 (Phospho-Tyr306) Antibody



Western blot analysis of lysate from Jurkat cells, using phospho-ZFP598 (Phospho-Tyr306) antibody.



Immunohistochemical analysis of paraffin-embedded human tonsil. 1, Antibody was diluted at 1:200(4 ° overnight). 2, Tris-EDTA,pH9.0 was used for antigen retrieval. 3,Secondary antibody was diluted at 1:200(room temperature, 30min).