

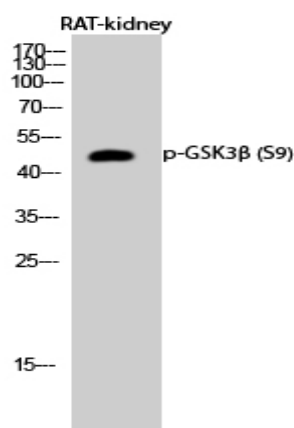
GSK3 β (phospho Ser9) Polyclonal Antibody

Catalog No :	YP0285
Reactivity :	Human;Mouse;Rat
Applications :	WB;IHC;IF;ELISA
Target :	GSK3 β
Fields :	>>EGFR tyrosine kinase inhibitor resistance;>>ErbB signaling pathway;>>Chemokine signaling pathway;>>Cell cycle;>>mTOR signaling pathway;>>PI3K-Akt signaling pathway;>>Wnt signaling pathway;>>Hedgehog signaling pathway;>>Axon guidance;>>Hippo signaling pathway;>>Focal adhesion;>>Signaling pathways regulating pluripotency of stem cells;>>IL-17 signaling pathway;>>T cell receptor signaling pathway;>>B cell receptor signaling pathway;>>Neurotrophin signaling pathway;>>Dopaminergic synapse;>>Insulin signaling pathway;>>Melanogenesis;>>Prolactin signaling pathway;>>Thyroid hormone signaling pathway;>>Insulin resistance;>>Non-alcoholic fatty liver disease;>>Cushing syndrome;>>Growth hormone synthesis, secretion and action;>>Alcoholic liver disease;>>Alzheimer disease;>>Prion disease;>>Pathways of neurodegeneration - multiple diseases;>>Shigellosis;>>Yersinia infection;>>Hepatitis C;>>Measles;>>Human cytomegalovirus infection;>>Human papillomavirus infection;>>Kaposi sarcoma-associated herpes
Gene Name :	GSK3B
Protein Name :	Glycogen synthase kinase-3 beta
Human Gene Id :	2932
Human Swiss Prot No :	P49841
Mouse Gene Id :	56637
Mouse Swiss Prot No :	Q9WV60
Rat Gene Id :	84027
Rat Swiss Prot No :	P18266

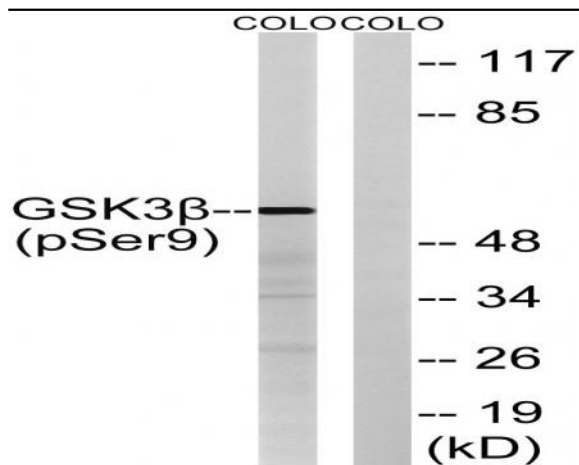
Immunogen :	Synthesized phospho-peptide around the phosphorylation site of human GSK3 β (phospho Ser9)
Specificity :	Phospho-GSK3 β (S9) Polyclonal Antibody detects endogenous levels of GSK3 β protein only when phosphorylated at S9.
Formulation :	Liquid in PBS containing 50% glycerol, 0.5% BSA and 0.02% sodium azide.
Source :	Polyclonal, Rabbit,IgG
Dilution :	WB 1:500 - 1:2000. IHC 1:100 - 1:300. ELISA: 1:10000.. IF 1:50-200
Purification :	The antibody was affinity-purified from rabbit antiserum by affinity-chromatography using epitope-specific immunogen.
Concentration :	1 mg/ml
Storage Stability :	-15°C to -25°C/1 year(Do not lower than -25°C)
Observed Band :	47kD
Cell Pathway :	ErbB_HER;Chemokine;Cell_Cycle_G1S;Cell_Cycle_G2M_DNA;WNT;WNT-T CELLHedgehog;Axon guidance;Focal adhesion;T_Cell_Receptor;B_Cell_Antigen ;Neurotrophin;Insulin_Receptor;Melanogenesis;Alzheimer's disease;
Background :	The protein encoded by this gene is a serine-threonine kinase, belonging to the glycogen synthase kinase subfamily. It is involved in energy metabolism, neuronal cell development, and body pattern formation. Polymorphisms in this gene have been implicated in modifying risk of Parkinson disease, and studies in mice show that overexpression of this gene may be relevant to the pathogenesis of Alzheimer disease. Alternatively spliced transcript variants encoding different isoforms have been found for this gene.[provided by RefSeq, Sep 2009],
Function :	catalytic activity:ATP + [tau protein] = ADP + [tau protein] phosphate.,enzyme regulation:Inhibited when phosphorylated by AKT1.,function:Participates in the Wnt signaling pathway. Implicated in the hormonal control of several regulatory proteins including glycogen synthase, MYB and the transcription factor JUN. Phosphorylates JUN at sites proximal to its DNA-binding domain, thereby reducing its affinity for DNA. Phosphorylates MUC1 in breast cancer cells, and decreases the interaction of MUC1 with CTNNB1/beta-catenin.,PTM:Phosphorylated by AKT1 and ILK1.,similarity:Belongs to the protein kinase superfamily.,similarity:Belongs to the protein kinase superfamily. CMGC Ser/Thr protein kinase family. GSK-3 subfamily.,similarity:Contains 1 protein kinase domain.,subunit:Monomer (By similarity). Interacts with CABYR, MUC1, NIN and PRUNE.,tissue specificity:Expressed in testis, thymus, prostate

Subcellular Location :	Cytoplasm . Nucleus . Cell membrane . The phosphorylated form shows localization to cytoplasm and cell membrane (PubMed:20937854). The MEMO1-RHOA-DIAPH1 signaling pathway controls localization of the phosphorylated form to the cell membrane (PubMed:20937854). .
Expression :	Expressed in testis, thymus, prostate and ovary and weakly expressed in lung, brain and kidney. Colocalizes with EIF2AK2/PKR and TAU in the Alzheimer disease (AD) brain.
Tag :	orthogonal
Sort :	1282
No2 :	9323T
No3 :	ab75814
No4 :	1
Host :	Rabbit
Modifications :	Phospho

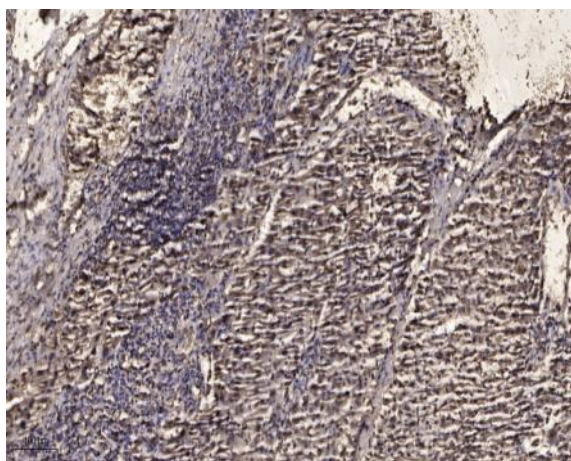
Products Images



Western Blot analysis of RAT-kidney cells using Phospho-GSK3 β (S9) Polyclonal Antibody diluted at 1:500



Western blot analysis of GSK3 β (Phospho-Ser9) Antibody. The lane on the right is blocked with the GSK3 β (Phospho-Ser9) peptide.



Immunohistochemical analysis of paraffin-embedded human liver cancer. 1, Antibody was diluted at 1:200(4° overnight). 2, Tris-EDTA,pH9.0 was used for antigen retrieval. 3,Secondary antibody was diluted at 1:200(room temperature, 45min).