

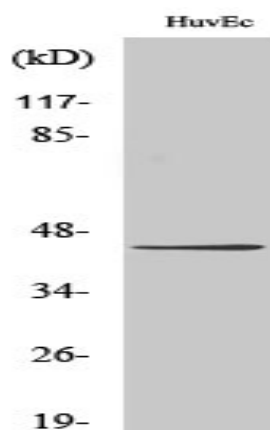
Connexin 43 (phospho Ser368) Polyclonal Antibody

Catalog No :	YP0071
Reactivity :	Human;Mouse;Rat
Applications :	WB;IHC;IF;ELISA
Target :	Connexin 43
Fields :	>>Gap junction;>>Arrhythmogenic right ventricular cardiomyopathy
Gene Name :	GJA1
Protein Name :	Gap junction alpha-1 protein
Human Gene Id :	2697
Human Swiss Prot No :	P17302
Mouse Gene Id :	14609
Mouse Swiss Prot No :	P23242
Rat Gene Id :	24392
Rat Swiss Prot No :	P08050
Immunogen :	The antiserum was produced against synthesized peptide derived from human Connexin 43 around the phosphorylation site of Ser367. AA range:332-381
Specificity :	Phospho-Connexin 43 (S368) Polyclonal Antibody detects endogenous levels of Connexin 43 protein only when phosphorylated at S368.
Formulation :	Liquid in PBS containing 50% glycerol, 0.5% BSA and 0.02% sodium azide.
Source :	Polyclonal, Rabbit,IgG
Dilution :	WB 1:500 - 1:2000. IHC 1:100 - 1:300. ELISA: 1:20000.. IF 1:50-200

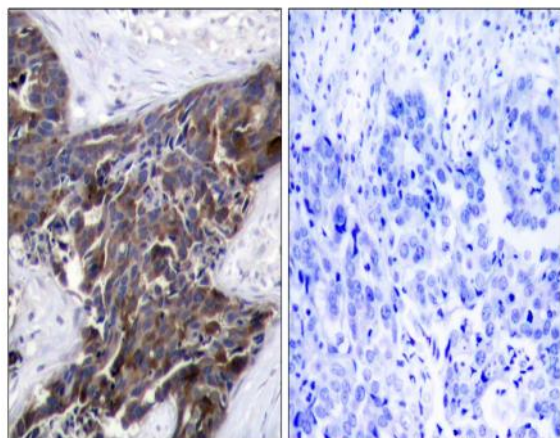
Purification :	The antibody was affinity-purified from rabbit antiserum by affinity-chromatography using epitope-specific immunogen.
Concentration :	1 mg/ml
Storage Stability :	-15°C to -25°C/1 year(Do not lower than -25°C)
Observed Band :	43kD
Cell Pathway :	Gap junction;Arrhythmogenic right ventricular cardiomyopathy (ARVC);
Background :	This gene is a member of the connexin gene family. The encoded protein is a component of gap junctions, which are composed of arrays of intercellular channels that provide a route for the diffusion of low molecular weight materials from cell to cell. The encoded protein is the major protein of gap junctions in the heart that are thought to have a crucial role in the synchronized contraction of the heart and in embryonic development. A related intronless pseudogene has been mapped to chromosome 5. Mutations in this gene have been associated with oculodentodigital dysplasia, autosomal recessive craniometaphyseal dysplasia and heart malformations. [provided by RefSeq, May 2014],
Function :	caution:PubMed:11741837 reported 2 mutations (Phe-11 and Ala-24) linked to non-syndromic autosomal recessive deafness (DFNBG). These mutations have subsequently been shown (PubMed:12457340) to involve the pseudogene of connexin-43 located on chromosome 5.,caution:PubMed:7715640 reported a mutation Pro-364 linked to congenital heart diseases. This was later shown (PubMed:8873667) to be an artifact.,disease:Defects in GJA1 are a cause of hypoplastic left heart syndrome (HLHS) [MIM:241550]. HLHS refers to the abnormal development of the left-sided cardiac structures, resulting in obstruction to blood flow from the left ventricular outflow tract. In addition, the syndrome includes underdevelopment of the left ventricle, aorta, and aortic arch, as well as mitral atresia or stenosis.,disease:Defects in GJA1 are the cause of autosomal dominant oculodentodigital dysplasia (ODDD) [MIM:164200]; al
Subcellular Location :	Cell membrane ; Multi-pass membrane protein . Cell junction, gap junction . Endoplasmic reticulum . Localizes at the intercalated disk (ICD) in cardiomyocytes and the proper localization at ICD is dependent on TMEM65. .
Expression :	Expressed in the heart and fetal cochlea.
Tag :	orthogonal,hot
Sort :	4417
No2 :	52559S

No4 :	1
Host :	Rabbit
Modifications :	Phospho

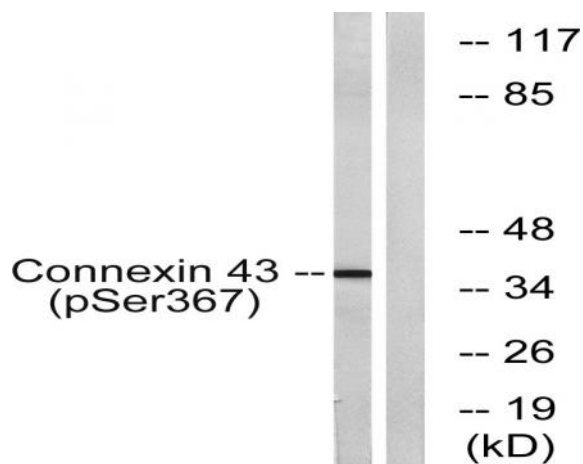
Products Images



Western Blot analysis of HuvEc cells using Phospho-Connexin 43 (S368) Polyclonal Antibody diluted at 1:2000



Immunohistochemistry analysis of paraffin-embedded human breast carcinoma, using Connexin 43 (Phospho-Ser367) Antibody. The picture on the right is blocked with the phospho peptide.



Western blot analysis of lysates from K562 cells treated with PMA 200ng/ml 10', using Connexin 43 (Phospho-Ser367) Antibody. The lane on the right is blocked with the phospho peptide.