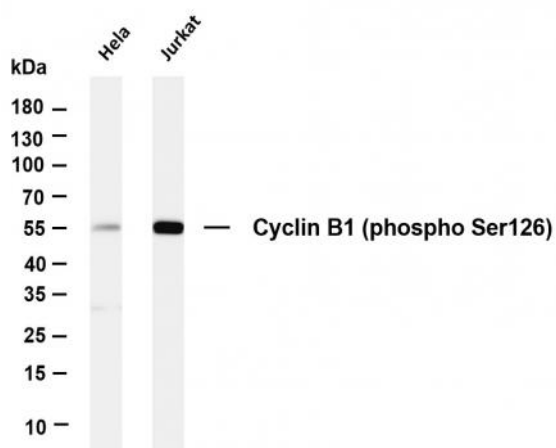


Cyclin B1 (phospho Ser126) (PT0070R) PT® Rabbit mAb

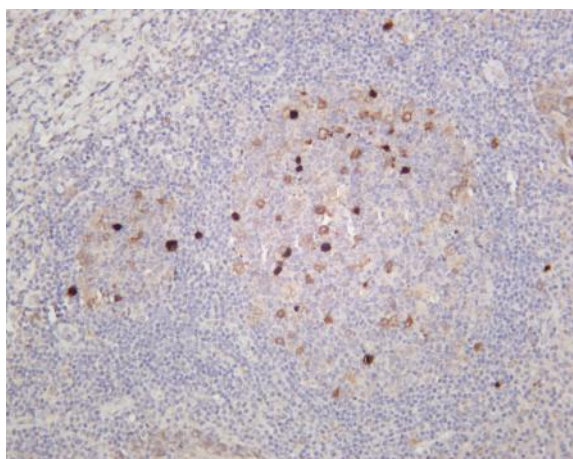
Catalog No :	YM8038
Reactivity :	Human;
Applications :	WB;IHC;IF;IP;ELISA
Gene Name :	>>FoxO signaling pathway;>>Cell cycle;>>Oocyte meiosis;>>p53 signaling pathway;>>Cellular senescence;>>Progesterone-mediated oocyte maturation;>>Human immunodeficiency virus 1 infection
Protein Name :	CCNB1
Sequence :	G2/mitotic-specific cyclin-B1
Human Gene Id :	891
Human Swiss Prot No :	P14635
Mouse Gene Id :	268697
Mouse Swiss Prot No :	P24860
Rat Gene Id :	25203
Rat Swiss Prot No :	P30277
Specificity :	endogenous
Formulation :	PBS, 50% glycerol, 0.05% Proclin 300, 0.05%BSA
Source :	Monoclonal, rabbit, IgG, Kappa
Dilution :	IHC 1:500-1:2000,WB 1:1000-1:5000,IF 1:200-1:1000,ELISA 1:5000-1:20000,IP 1:50-1:200,
Purification :	Protein A
Storage Stability :	-15°C to -25°C/1 year(Do not lower than -25°C)

Molecularweight :	48kD
Observed Band :	55kD
Cell Pathway :	AMPK
Background :	<p>The protein encoded by this gene is a regulatory protein involved in mitosis. The gene product complexes with p34(cdc2) to form the maturation-promoting factor (MPF). Two alternative transcripts have been found, a constitutively expressed transcript and a cell cycle-regulated transcript, that is expressed predominantly during G2/M phase. The different transcripts result from the use of alternate transcription initiation sites. [provided by RefSeq, Jul 2008],</p>
Function :	<p>developmental stage:Accumulates steadily during G2 and is abruptly destroyed at mitosis.,function:Essential for the control of the cell cycle at the G2/M (mitosis) transition.,PTM:Ubiquitinated by the SCF(NIPA) complex during interphase, leading to its destruction. Not ubiquitinated during G2/M phases.,similarity:Belongs to the cyclin family.,similarity:Belongs to the cyclin family. Cyclin AB subfamily.,subunit:Interacts with the CDC2 protein kinase to form a serine/threonine kinase holoenzyme complex also known as maturation promoting factor (MPF). The cyclin subunit imparts substrate specificity to the complex. Binds HEI10. Interacts with catalytically active RALBP1 and CDC2 during mitosis to form an endocytotic complex during interphase.,</p>
Subcellular Location :	Cytoplasm, Nuclear
Expression :	Breast adenocarcinoma,Lung,Placenta,
Tag :	hot,recombinant
Sort :	1
No3 :	ab32053
No4 :	1
Host :	Rabbit
Modifications :	Phospho

Products Images



Various whole cell lysates were separated by 4-20% SDS-PAGE, and the membrane was blotted with anti-Cyclin B1 (phospho Ser126) (PT0070R) antibody. The HRP-conjugated Goat anti-Rabbit IgG(H + L) antibody was used to detect the antibody. Lane 1: HeLa Lane 2: Jurkat Predicted band size: 48kDa Observed band size: 55kDa



Human tonsil was stained with anti-Cyclin B1 (phospho Ser126) (PT0070R) rabbit antibody