

Plasma Kallikrein LC (Cleaved-I391) rabbit pAb

Catalog No :	YC0205
Reactivity :	Human;Rat;Mouse;
Applications :	WB;ELISA;IHC
Target :	Plasma Kallikrein LC
Fields :	>>Complement and coagulation cascades
Gene Name :	KLKB1 KLK3
Protein Name :	Plasma Kallikrein LC (Cleaved-I391)
Human Gene Id :	3818
Human Swiss Prot No :	P03952
Mouse Gene Id :	16621
Mouse Swiss Prot No :	P26262
Rat Swiss Prot No :	P14272
Immunogen :	Synthesized peptide derived from human Plasma Kallikrein LC (Cleaved-I391)
Specificity :	This antibody detects endogenous levels of Human Cleaved-Plasma Kallikrein LC (I391, protein was cleaved amino acid sequence between 390-391)
Formulation :	Liquid in PBS containing 50% glycerol, 0.5% BSA and 0.02% sodium azide.
Source :	Polyclonal, Rabbit,IgG
Dilution :	WB 1:500-2000;IHC 1:50-300; ELISA 2000-20000
Purification :	The antibody was affinity-purified from rabbit serum by affinity-chromatography using specific immunogen.

Concentration : 1 mg/ml

Storage Stability : -15°C to -25°C/1 year(Do not lower than -25°C)

Observed Band : 28 70kD

Background : catalytic activity: Cleaves selectively Arg-|-Xaa and Lys-|-Xaa bonds, including Lys-|-Arg and Arg-|-Ser bonds in (human) kininogen to release bradykinin., disease: Defects in KLKB1 are the cause of prekallikrein deficiency (PKK deficiency) [MIM:612423]; also called Fletcher factor deficiency. This disorder is a blood coagulation defect., function: The enzyme cleaves Lys-Arg and Arg-Ser bonds. It activates, in a reciprocal reaction, factor XII after its binding to a negatively charged surface. It also releases bradykinin from HMW kininogen and may also play a role in the renin-angiotensin system by converting prorenin into renin., similarity: Belongs to the peptidase S1 family., similarity: Belongs to the peptidase S1 family. Plasma kallikrein subfamily., similarity: Contains 1 peptidase S1 domain., similarity: Contains 4 apple domains., subunit: The zymogen is activated by factor XIIa, which cleaves the molecule into a light chain, which contains the active site, and a heavy chain, which associates with HMW kininogen. These chains are linked by one or more disulfide bonds.,

Function : kinin cascade, plasma kallikrein-kinin cascade, acute inflammatory response, Factor XII activation, regulation of acute inflammatory response, proteolysis, defense response, inflammatory response, blood coagulation, hemostasis, response to wounding, positive regulation of macromolecule metabolic process, regulation of protein maturation by peptide bond cleavage, positive regulation of protein maturation by peptide bond cleavage, protein processing, regulation of proteolysis, regulation of blood coagulation, negative regulation of blood coagulation, zymogen activation, plasminogen activation, regulation of response to external stimulus, regulation of cellular protein metabolic process, positive regulation of cellular protein metabolic process, wound healing, fibrinolysis, positive regulation of proteolysis, regulation of inflammatory response, coagulation, regulation of coagulation, negativ

Subcellular Location : Secreted.

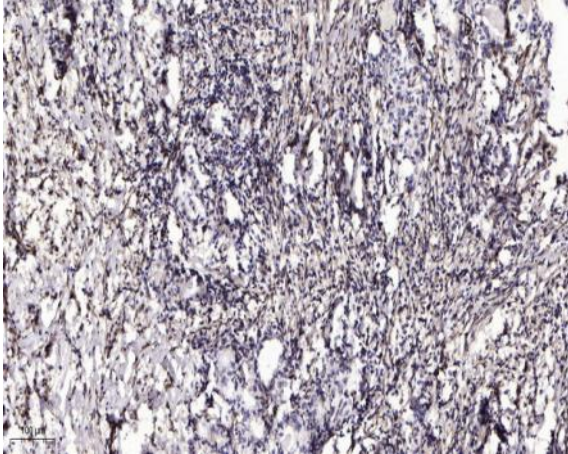
Sort : 12816

No4 : 1

Host : Rabbit

Modifications : Unmodified

Products Images



Immunohistochemical analysis of paraffin-embedded human Gastric adenocarcinoma. 1, Antibody was diluted at 1:200(4° overnight). 2, Tris-EDTA,pH9.0 was used for antigen retrieval. 3,Secondary antibody was diluted at 1:200(room temperature, 45min).