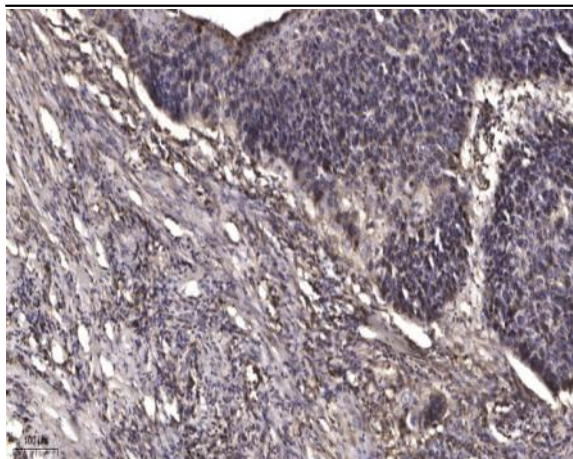


MMP8 (Cleaved-Leu101) rabbit pAb

Catalog No :	YC0193
Reactivity :	Human;Mouse;Rat
Applications :	WB;IHC
Target :	MMP-8
Gene Name :	MMP8 CLG1
Protein Name :	MMP8 (Cleaved-Leu101)
Human Gene Id :	4317
Human Swiss Prot No :	P22894
Mouse Gene Id :	17394
Mouse Swiss Prot No :	O70138
Rat Gene Id :	63849
Rat Swiss Prot No :	O88766
Immunogen :	Synthesized peptide derived from human MMP8 (Cleaved-Leu101)
Specificity :	This antibody detects endogenous levels of Human,Mouse,Rat MMP8 (Cleaved-Leu101, protein was cleaved amino acid sequence between 100-101)
Formulation :	Liquid in PBS containing 50% glycerol, 0.5% BSA and 0.02% sodium azide.
Source :	Polyclonal, Rabbit,IgG
Dilution :	WB 1:500-2000;IHC 1:50-300
Purification :	The antibody was affinity-purified from rabbit serum by affinity-chromatography using specific immunogen.

Concentration :	1 mg/ml
Storage Stability :	-15°C to -25°C/1 year(Do not lower than -25°C)
Observed Band :	40 53kD
Background :	<p>catalytic activity: Cleavage of interstitial collagens in the triple helical domain. Unlike EC 3.4.24.7, this enzyme cleaves type III collagen more slowly than type I., cofactor: Binds 2 zinc ions per subunit., cofactor: Binds 3 calcium ions per subunit., domain: The conserved cysteine present in the cysteine-switch motif binds the catalytic zinc ion, thus inhibiting the enzyme. The dissociation of the cysteine from the zinc ion upon the activation-peptide release activates the enzyme., enzyme regulation: Cannot be activated without removal of the activation peptide., function: Can degrade fibrillar type I, II, and III collagens., similarity: Belongs to the peptidase M10A family., similarity: Contains 4 hemopexin-like domains., subcellular location: Stored in intracellular granules., tissue specificity: Neutrophils.,</p>
Function :	<p>skeletal system development, ossification, proteolysis, collagen catabolic process, collagen metabolic process, multicellular organismal metabolic process, multicellular organismal catabolic process, multicellular organismal macromolecule metabolic process, bone development,</p>
Subcellular Location :	<p>Cytoplasmic granule. Secreted, extracellular space, extracellular matrix . Stored in intracellular granules.</p>
Expression :	Neutrophils.
Sort :	9713
No4 :	1
Host :	Rabbit
Modifications :	Unmodified

Products Images



Immunohistochemical analysis of paraffin-embedded human Squamous cell carcinoma of lung. 1, Antibody was diluted at 1:200(4° overnight). 2, Tris-EDTA,pH9.0 was used for antigen retrieval. 3,Secondary antibody was diluted at 1:200(room temperature, 45min).