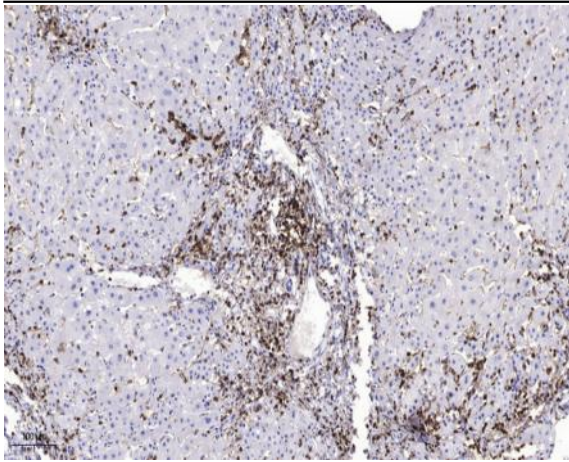


MMP7 (Cleaved-Tyr95) rabbit pAb

Catalog No :	YC0192
Reactivity :	Human;Mouse;Rat
Applications :	WB;ELISA;IHC
Target :	MMP-7
Fields :	>>Wnt signaling pathway;>>Human T-cell leukemia virus 1 infection
Gene Name :	MMP7 MP SL1 PUMP1
Protein Name :	MMP7 (Cleaved-Tyr95)
Human Gene Id :	4316
Human Swiss Prot No :	P09237
Mouse Swiss Prot No :	Q10738
Rat Gene Id :	25335
Rat Swiss Prot No :	P50280
Immunogen :	Synthesized peptide derived from human MMP7 (Cleaved-Tyr95)
Specificity :	This antibody detects endogenous levels of Human,Mouse,Rat MMP7 (Cleaved-Tyr95, protein was cleaved amino acid sequence between 94-95)
Formulation :	Liquid in PBS containing 50% glycerol, 0.5% BSA and 0.02% sodium azide.
Source :	Polyclonal, Rabbit,IgG
Dilution :	WB 1:500-2000;IHC 1:50-300; ELISA 2000-20000
Purification :	The antibody was affinity-purified from rabbit serum by affinity-chromatography using specific immunogen.

Concentration :	1 mg/ml
Storage Stability :	-15°C to -25°C/1 year(Do not lower than -25°C)
Observed Band :	19 29kD
Background :	<p>catalytic activity: Cleavage of 14-Ala- -Leu-15 and 16-Tyr- -Leu-17 in B chain of insulin. No action on collagen types I, II, IV, V. Cleaves gelatin chain alpha-2(I) > alpha-1(I)., cofactor: Binds 2 calcium ions per subunit., cofactor: Binds 2 zinc ions per subunit., domain: The conserved cysteine present in the cysteine-switch motif binds the catalytic zinc ion, thus inhibiting the enzyme. The dissociation of the cysteine from the zinc ion upon the activation-peptide release activates the enzyme., function: Degrades casein, gelatins of types I, III, IV, and V, and fibronectin. Activates procollagenase., similarity: Belongs to the peptidase M10A family.,</p>
Function :	<p>proteolysis, collagen catabolic process, collagen metabolic process, regulation of cell proliferation, multicellular organismal metabolic process, multicellular organismal catabolic process, multicellular organismal macromolecule metabolic process,</p>
Subcellular Location :	Secreted, extracellular space, extracellular matrix .
Sort :	9712
No4 :	1
Host :	Rabbit
Modifications :	Unmodified

Products Images



Immunohistochemical analysis of paraffin-embedded human liver cancer. 1, Antibody was diluted at 1:200(4° overnight). 2, Tris-EDTA,pH9.0 was used for antigen retrieval. 3,Secondary antibody was diluted at 1:200(room temperature, 45min).