

**MMP26 (Cleaved-Thr90) rabbit pAb**

<b>Catalog No :</b>	YC0190
<b>Reactivity :</b>	Human
<b>Applications :</b>	WB;ELISA;IHC
<b>Target :</b>	MMP26
<b>Gene Name :</b>	MMP26
<b>Protein Name :</b>	MMP26 (Cleaved-Thr90)
<b>Human Gene Id :</b>	56547
<b>Human Swiss Prot No :</b>	Q9NRE1
<b>Immunogen :</b>	Synthesized peptide derived from human MMP26 (Cleaved-Thr90)
<b>Specificity :</b>	This antibody detects endogenous levels of Human MMP26 (Cleaved-Thr90, protein was cleaved amino acid sequence between 89-90 )
<b>Formulation :</b>	Liquid in PBS containing 50% glycerol, 0.5% BSA and 0.02% sodium azide.
<b>Source :</b>	Polyclonal, Rabbit,IgG
<b>Dilution :</b>	WB 1:500-2000;IHC 1:50-300; ELISA 2000-20000
<b>Purification :</b>	The antibody was affinity-purified from rabbit serum by affinity-chromatography using specific immunogen.
<b>Concentration :</b>	1 mg/ml
<b>Storage Stability :</b>	-15°C to -25°C/1 year(Do not lower than -25°C)
<b>Observed Band :</b>	17 25kD
<b>Subcellular Location :</b>	Secreted, extracellular space, extracellular matrix.

**Expression :** Expressed specifically in uterus and placenta. Is also widely expressed in malignant tumors from different sources as well as in diverse tumor cell lines.

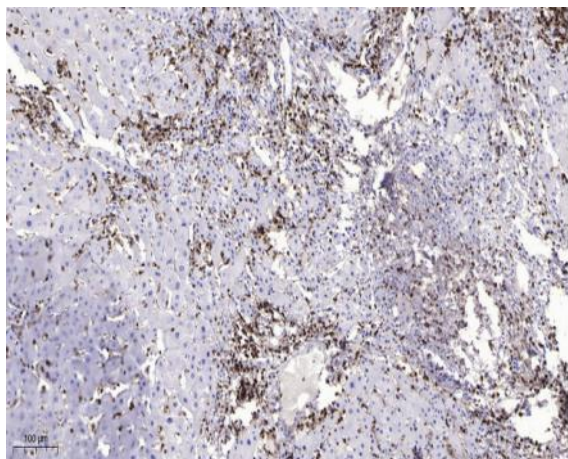
**Sort :** 9710

**No4 :** 1

**Host :** Rabbit

**Modifications :** Unmodified

## Products Images



Immunohistochemical analysis of paraffin-embedded human liver cancer. 1, Antibody was diluted at 1:200(4° overnight). 2, Tris-EDTA,pH9.0 was used for antigen retrieval. 3,Secondary antibody was diluted at 1:200(room temperature, 45min).