

MMP21 (Cleaved-Ser145) rabbit pAb

Catalog No :	YC0189
Reactivity :	Human;Mouse
Applications :	WB;IHC
Target :	MMP21
Gene Name :	MMP21
Protein Name :	MMP21 (Cleaved-Ser145)
Human Gene Id :	118856
Human Swiss Prot No :	Q8N119
Mouse Gene Id :	214766
Mouse Swiss Prot No :	Q8K3F2
Immunogen :	Synthesized peptide derived from human MMP21 (Cleaved-Ser145)
Specificity :	This antibody detects endogenous levels of Human, Mouse MMP21 (Cleaved-Ser145, protein was cleaved amino acid sequence between 144-145)
Formulation :	Liquid in PBS containing 50% glycerol, 0.5% BSA and 0.02% sodium azide.
Source :	Polyclonal, Rabbit,IgG
Dilution :	WB 1:500-2000;IHC 1:50-300
Purification :	The antibody was affinity-purified from rabbit serum by affinity-chromatography using specific immunogen.
Concentration :	1 mg/ml
Storage Stability :	-15°C to -25°C/1 year(Do not lower than -25°C)

Observed Band : 47 65kD

Background : This gene encodes a member of the matrix metalloproteinase family. Proteins in this family are involved in the breakdown of extracellular matrix for both normal physiological processes, such as embryonic development, reproduction, and tissue remodeling, and disease processes, such as asthma and tumor metastasis. The encoded protein may play an important role in embryogenesis, particularly in neuronal cells, as well as in lymphocyte development and survival. [provided by RefSeq, May 2013],

Function : cofactor: Binds 1 zinc ion per subunit., cofactor: Calcium., domain: The conserved cysteine present in the cysteine-switch motif binds the catalytic zinc ion, thus inhibiting the enzyme. The dissociation of the cysteine from the zinc ion upon the activation-peptide release activates the enzyme., function: May have an important and specific function in tumor progression and embryogenesis. Cleaves alpha-1-antitrypsin., PTM: The precursor is cleaved by a furin endopeptidase., similarity: Belongs to the peptidase M10A family., similarity: Contains 4 hemopexin-like domains., tissue specificity: Identified in fetal brain, kidney and liver. In adult tissues found primarily in ovary, kidney, liver, lung, placenta, brain and peripheral blood leukocytes. Expressed as well in various cancer cell lines.,

Subcellular Location : Secreted .

Expression : Identified in fetal brain, kidney and liver. In adult tissues found primarily in ovary, kidney, liver, lung, placenta, brain and peripheral blood leukocytes. Expressed as well in various cancer cell lines.

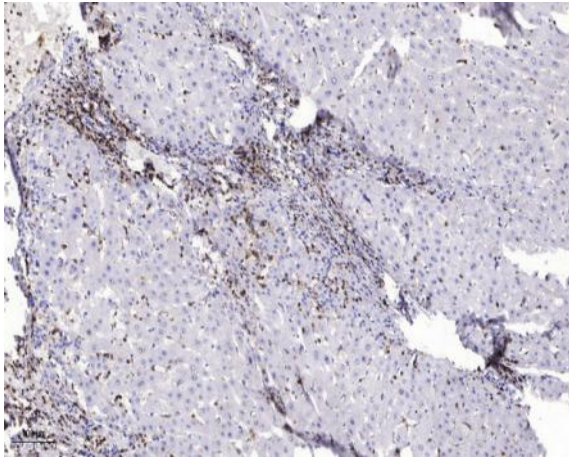
Sort : 9708

No4 : 1

Host : Rabbit

Modifications : Unmodified

Products Images



Immunohistochemical analysis of paraffin-embedded human liver cancer. 1, Antibody was diluted at 1:200(4° overnight). 2, Tris-EDTA,pH9.0 was used for antigen retrieval. 3,Secondary antibody was diluted at 1:200(room temperature, 45min).