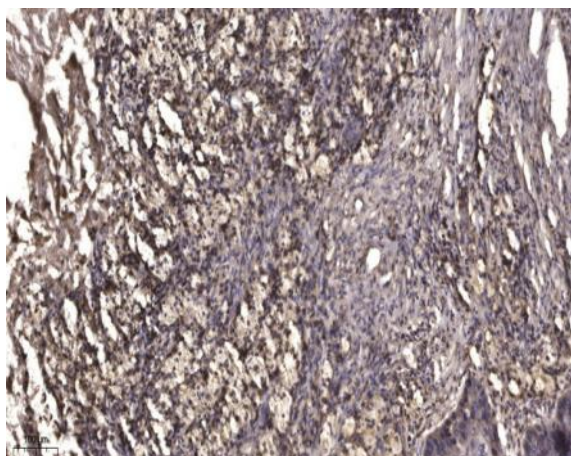


MMP20 (Cleaved-Tyr108) rabbit pAb

Catalog No :	YC0188
Reactivity :	Human;Mouse;Rat
Applications :	WB;IHC
Target :	MMP20
Gene Name :	MMP20
Protein Name :	MMP20 (Cleaved-Tyr108)
Human Gene Id :	9313
Human Swiss Prot No :	O60882
Mouse Gene Id :	30800
Mouse Swiss Prot No :	P57748
Immunogen :	Synthesized peptide derived from human MMP20 (Cleaved-Tyr108)
Specificity :	This antibody detects endogenous levels of Human,Mouse,Rat MMP20 (Cleaved-Tyr108, protein was cleaved amino acid sequence between 107-108)
Formulation :	Liquid in PBS containing 50% glycerol, 0.5% BSA and 0.02% sodium azide.
Source :	Polyclonal, Rabbit,IgG
Dilution :	WB 1:500-2000;IHC 1:50-300
Purification :	The antibody was affinity-purified from rabbit serum by affinity-chromatography using specific immunogen.
Concentration :	1 mg/ml
Storage Stability :	-15°C to -25°C/1 year(Do not lower than -25°C)

Observed Band :	42 53kD
Subcellular Location :	Secreted, extracellular space, extracellular matrix .
Expression :	Expressed specifically in the enamel organ.
Sort :	9707
No4 :	1
Host :	Rabbit
Modifications :	Unmodified

Products Images



Immunohistochemical analysis of paraffin-embedded human Squamous cell carcinoma of lung. 1, Antibody was diluted at 1:200(4° overnight). 2, Tris-EDTA,pH9.0 was used for antigen retrieval. 3,Secondary antibody was diluted at 1:200(room temperature, 45min).