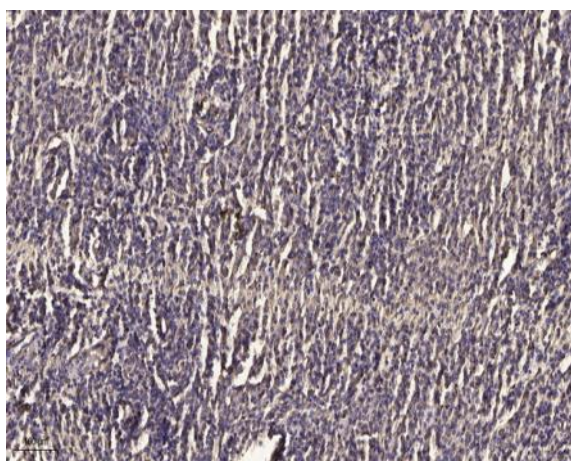


Kallikrein-7 (Cleaved-Ile30) rabbit pAb

Catalog No :	YC0183
Reactivity :	Human;Mouse;Rat
Applications :	WB;IHC
Target :	Kallikrein-7
Gene Name :	KLK7 PRSS6 SCCE
Protein Name :	Kallikrein-7 (Cleaved-Ile30)
Human Gene Id :	5650
Human Swiss Prot No :	P49862
Mouse Gene Id :	23993
Mouse Swiss Prot No :	Q91VE3
Rat Gene Id :	24523
Rat Swiss Prot No :	P36373
Immunogen :	Synthesized peptide derived from human Kallikrein-7 (Cleaved-Ile30)
Specificity :	This antibody detects endogenous levels of Human,Mouse,Rat Kallikrein-7 (Cleaved-Ile30, protein was cleaved amino acid sequence between 29-30)
Formulation :	Liquid in PBS containing 50% glycerol, 0.5% BSA and 0.02% sodium azide.
Source :	Polyclonal, Rabbit,IgG
Dilution :	WB 1:500-2000;IHC 1:50-300
Purification :	The antibody was affinity-purified from rabbit serum by affinity-chromatography using specific immunogen.

Concentration :	1 mg/ml
Storage Stability :	-15°C to -25°C/1 year(Do not lower than -25°C)
Observed Band :	25kD
Subcellular Location :	Secreted . In ovarian carcinoma, secreted and also observed at the apical membrane and in cytoplasm at the invasive front.
Expression :	Abundantly expressed in the skin and is expressed by keratinocytes in the epidermis. Also expressed in the brain, mammary gland, cerebellum, spinal cord and kidney. Lower levels in salivary glands, uterus, thymus, thyroid, placenta, trachea and testis. Up-regulated in ovarian carcinoma, especially late-stage serous carcinoma, compared with normal ovaries and benign adenomas (at protein level).
Sort :	8834
No4 :	1
Host :	Rabbit
Modifications :	Unmodified

Products Images



Immunohistochemical analysis of paraffin-embedded human meningioma. 1, Antibody was diluted at 1:200(4° overnight). 2, Tris-EDTA,pH9.0 was used for antigen retrieval. 3,Secondary antibody was diluted at 1:200(room temperature, 45min).