

**ITGA8 (heavy chain, Cleaved-Arg906) rabbit pAb**

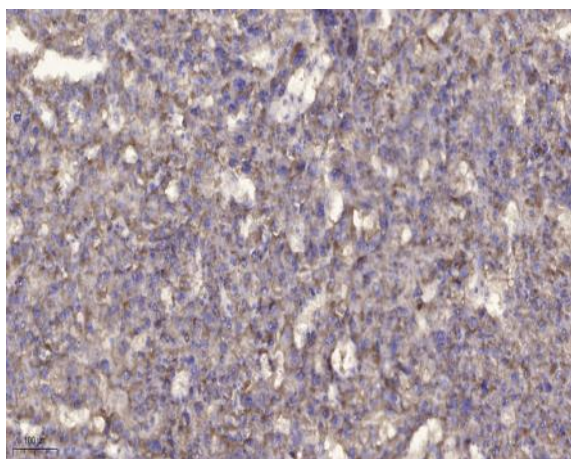
<b>Catalog No :</b>	YC0171
<b>Reactivity :</b>	Human;Mouse;Rat
<b>Applications :</b>	WB;IHC
<b>Target :</b>	ITGA8
<b>Fields :</b>	>>PI3K-Akt signaling pathway;>>Focal adhesion;>>ECM-receptor interaction;>>Cell adhesion molecules;>>Regulation of actin cytoskeleton;>>Human papillomavirus infection;>>Hypertrophic cardiomyopathy;>>Arrhythmogenic right ventricular cardiomyopathy;>>Dilated cardiomyopathy
<b>Gene Name :</b>	ITGA8
<b>Protein Name :</b>	ITGA8 (heavy chain, Cleaved-Arg906)
<b>Human Gene Id :</b>	8516
<b>Human Swiss Prot No :</b>	P53708
<b>Mouse Gene Id :</b>	241226
<b>Mouse Swiss Prot No :</b>	A2ARA8
<b>Immunogen :</b>	Synthesized peptide derived from human ITGA8 (heavy chain, Cleaved-Arg906)
<b>Specificity :</b>	This antibody detects endogenous levels of Human,Mouse,Rat ITGA8 (heavy chain, Cleaved-Arg906, protein was cleaved amino acid sequence between 906-907 )
<b>Formulation :</b>	Liquid in PBS containing 50% glycerol, 0.5% BSA and 0.02% sodium azide.
<b>Source :</b>	Polyclonal, Rabbit,IgG
<b>Dilution :</b>	WB 1:500-2000;IHC 1:50-300

---

<b>Purification :</b>	The antibody was affinity-purified from rabbit serum by affinity-chromatography using specific immunogen.
<b>Concentration :</b>	1 mg/ml
<b>Storage Stability :</b>	-15°C to -25°C/1 year(Do not lower than -25°C)
<b>Observed Band :</b>	95 115kD
<b>Subcellular Location :</b>	Membrane ; Single-pass type I membrane protein . Cell membrane .
<b>Expression :</b>	Expressed in mesenchymal cells, including alveolar myofibroblasts, kidney mesangial cells and hepatic stellar cells and vascular and visceral smooth muscle (at protein level).
<b>Sort :</b>	8723
<b>No4 :</b>	1
<b>Host :</b>	Rabbit
<b>Modifications :</b>	Unmodified

---

## Products Images



Immunohistochemical analysis of paraffin-embedded human liver cancer. 1, Antibody was diluted at 1:200(4° overnight). 2, Tris-EDTA,pH9.0 was used for antigen retrieval. 3,Secondary antibody was diluted at 1:200(room temperature, 45min).