

ITGA5 (heavy chain, Cleaved-Arg894) rabbit pAb

Catalog No :	YC0169
Reactivity :	Human;Mouse
Applications :	WB;ELISA;IHC
Target :	Integrin α 5
Fields :	>>Phagosome;>>PI3K-Akt signaling pathway;>>Focal adhesion;>>ECM-receptor interaction;>>Hematopoietic cell lineage;>>Regulation of actin cytoskeleton;>>Bacterial invasion of epithelial cells;>>Shigellosis;>>Pertussis;>>Yersinia infection;>>Human papillomavirus infection;>>Herpes simplex virus 1 infection;>>Proteoglycans in cancer;>>MicroRNAs in cancer;>>Hypertrophic cardiomyopathy;>>Arrhythmogenic right ventricular cardiomyopathy;>>Dilated cardiomyopathy
Gene Name :	ITGA5 FNRA
Protein Name :	ITGA5 (heavy chain, Cleaved-Arg894)
Human Gene Id :	3678
Human Swiss Prot No :	P08648
Mouse Gene Id :	16402
Mouse Swiss Prot No :	P11688
Immunogen :	Synthesized peptide derived from human ITGA5 (heavy chain, Cleaved-Arg894)
Specificity :	This antibody detects endogenous levels of Human,Mouse ITGA5 (heavy chain, Cleaved-Arg894, protein was cleaved amino acid sequence between 894-895)
Formulation :	Liquid in PBS containing 50% glycerol, 0.5% BSA and 0.02% sodium azide.
Source :	Polyclonal, Rabbit,IgG
	WB 1:500-2000;IHC 1:50-300; ELISA 2000-20000

Purification : The antibody was affinity-purified from rabbit serum by affinity-chromatography using specific immunogen.

Concentration : 1 mg/ml

Storage Stability : -15°C to -25°C/1 year(Do not lower than -25°C)

Observed Band : 94 110kD

Background : function:Integrin alpha-5/beta-1 is a receptor for fibronectin and fibrinogen. It recognizes the sequence R-G-D in its ligands. In case of HIV-1 infection, the interaction with extracellular viral Tat protein seems to enhance angiogenesis in Kaposi's sarcoma lesions.,similarity:Belongs to the integrin alpha chain family.,similarity:Contains 7 FG-GAP repeats.,subunit:Heterodimer of an alpha and a beta subunit. The alpha subunit is composed of an heavy and a light chain linked by a disulfide bond. Alpha-5 associates with beta-1. Interacts with HPS5 and NISCH. Interacts with HIV-1 Tat. Interacts with RAB21.,

Function : cell motion, cell-substrate junction assembly, cell adhesion, heterophilic cell adhesion, leukocyte adhesion, cell surface receptor linked signal transduction, integrin-mediated signaling pathway, behavior, learning or memory, memory,response to wounding, cell-cell adhesion, cell migration, biological adhesion, cell adhesion mediated by integrin, cell-cell adhesion mediated by integrin, cell junction assembly, cell junction organization, wound healing, spreading of epidermal cells, wound healing, cell motility, neurological system process, cognition, localization of cell,

Subcellular Location : Membrane; Single-pass type I membrane protein. Cell junction, focal adhesion . Cell surface .

Tag : orthogonal

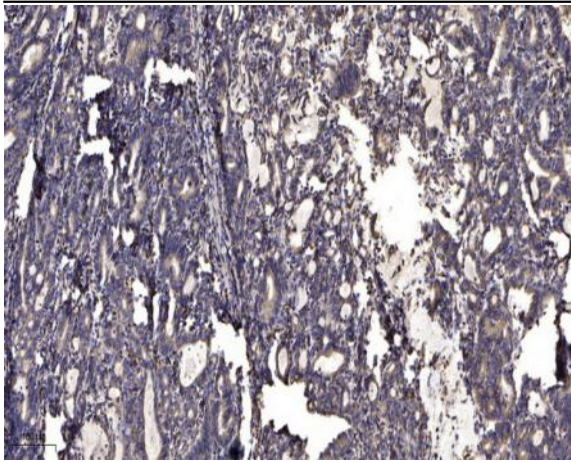
Sort : 8721

No4 : 1

Host : Rabbit

Modifications : Unmodified

Products Images



Immunohistochemical analysis of paraffin-embedded human Gastric adenocarcinoma. 1, Antibody was diluted at 1:200(4° overnight). 2, Tris-EDTA,pH9.0 was used for antigen retrieval. 3,Secondary antibody was diluted at 1:200(room temperature, 45min).