

**GSK3α (phospho Ser21) Polyclonal Antibody**

<b>Catalog No :</b>	YP0122
<b>Reactivity :</b>	Human;Mouse;Rat
<b>Applications :</b>	WB;IHC;IF;IP;ELISA
<b>Target :</b>	GSK3α
<b>Fields :</b>	>>Chemokine signaling pathway;>>Dopaminergic synapse;>>Non-alcoholic fatty liver disease;>>Shigellosis
<b>Gene Name :</b>	GSK3A
<b>Protein Name :</b>	Glycogen synthase kinase-3 alpha
<b>Human Gene Id :</b>	2931
<b>Human Swiss Prot No :</b>	P49840
<b>Mouse Gene Id :</b>	606496
<b>Mouse Swiss Prot No :</b>	Q2NL51
<b>Rat Gene Id :</b>	50686
<b>Rat Swiss Prot No :</b>	P18265
<b>Immunogen :</b>	The antiserum was produced against synthesized peptide derived from human GSK3 alpha around the phosphorylation site of Ser21. AA range:10-59
<b>Specificity :</b>	Phospho-GSK3α (S21) Polyclonal Antibody detects endogenous levels of GSK3α protein only when phosphorylated at S21.
<b>Formulation :</b>	Liquid in PBS containing 50% glycerol, 0.5% BSA and 0.02% sodium azide.
<b>Source :</b>	Polyclonal, Rabbit,IgG
<b>Dilution :</b>	WB 1:500 - 1:2000. IHC 1:100 - 1:300. Immunoprecipitation: 2-5 ug:mg lysate.

ELISA: 1:20000.. IF 1:50-200

---

**Purification :** The antibody was affinity-purified from rabbit antiserum by affinity-chromatography using epitope-specific immunogen.

---

**Concentration :** 1 mg/ml

---

**Storage Stability :** -15°C to -25°C/1 year(Do not lower than -25°C)

---

**Observed Band :** 55kD

---

**Cell Pathway :** Chemokine;

---

**Background :** glycogen synthase kinase 3 alpha(GSK3A) Homo sapiens This gene encodes a multifunctional Ser/Thr protein kinase that is implicated in the control of several regulatory proteins including glycogen synthase, and transcription factors, such as JUN. It also plays a role in the WNT and PI3K signaling pathways, as well as regulates the production of beta-amyloid peptides associated with Alzheimer's disease. [provided by RefSeq, Oct 2011],

---

**Function :** catalytic activity:ATP + [tau protein] = ADP + [tau protein] phosphate.,function:Implicated in the hormonal control of several regulatory proteins including glycogen synthase, MYB and the transcription factor JUN.,similarity:Belongs to the protein kinase superfamily.,similarity:Belongs to the protein kinase superfamily. CMGC Ser/Thr protein kinase family. GSK-3 subfamily.,similarity:Contains 1 protein kinase domain.,subunit:Monomer.,

---

**Subcellular Location :** mitochondrion,cytosol,beta-catenin destruction complex,postsynapse,

---

**Expression :** Brain,Eye,Foreskin,Lung,Pancreas,Platelet,Testis,

---

**Tag :** ip

---

**Sort :** 7161

---

**No2 :** 9316L

---

**No4 :** 1

---

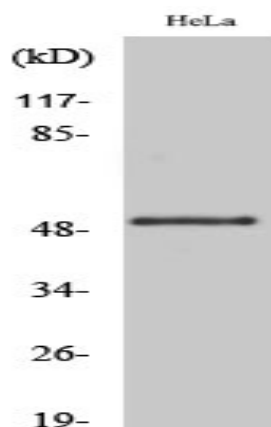
**Host :** Rabbit

---

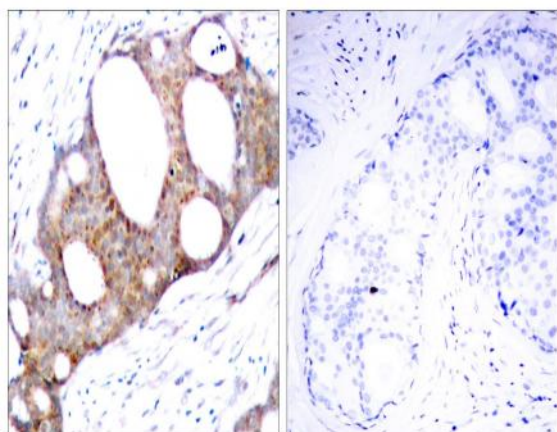
**Modifications :** Phospho

---

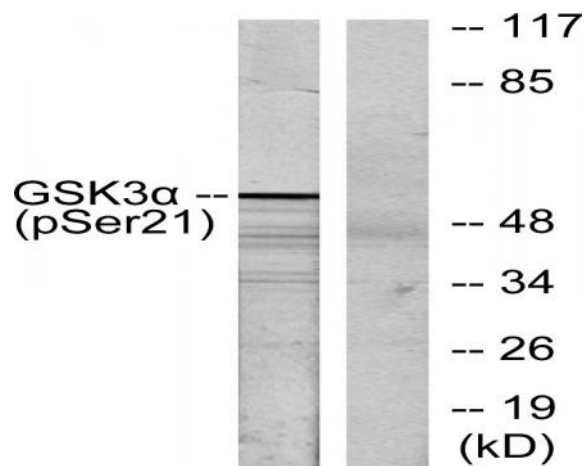
## Products Images



Western Blot analysis of various cells using Phospho-GSK3α (S21) Polyclonal Antibody



Immunohistochemistry analysis of paraffin-embedded human breast carcinoma, using GSK3 alpha (Phospho-Ser21) Antibody. The picture on the right is blocked with the phospho peptide.



Western blot analysis of lysates from ovary cancer, using GSK3 alpha (Phospho-Ser21) Antibody. The lane on the right is blocked with the phospho peptide.