

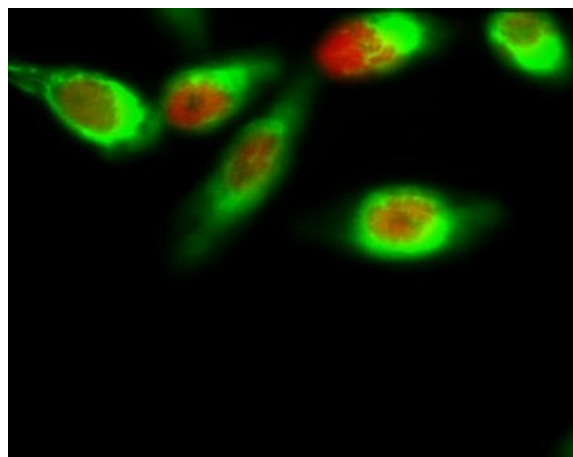
**FoxO1 (phospho Ser256) Polyclonal Antibody**

<b>Catalog No :</b>	YP0113
<b>Reactivity :</b>	Human;Mouse;Rat;Drosophila
<b>Applications :</b>	WB;IHC;IF;ELISA
<b>Target :</b>	FoxO1
<b>Fields :</b>	>>FoxO signaling pathway;>>AMPK signaling pathway;>>Longevity regulating pathway;>>Longevity regulating pathway - multiple species;>>Cellular senescence;>>Insulin signaling pathway;>>Thyroid hormone signaling pathway;>>Glucagon signaling pathway;>>Insulin resistance;>>AGE-RAGE signaling pathway in diabetic complications;>>Alcoholic liver disease;>>Shigellosis;>>Human papillomavirus infection;>>Pathways in cancer;>>Transcriptional misregulation in cancer;>>Prostate cancer
<b>Gene Name :</b>	FOXO1
<b>Protein Name :</b>	Forkhead box protein O1
<b>Human Gene Id :</b>	2308
<b>Human Swiss Prot No :</b>	Q12778
<b>Mouse Gene Id :</b>	56458
<b>Mouse Swiss Prot No :</b>	Q9R1E0
<b>Rat Gene Id :</b>	84482
<b>Rat Swiss Prot No :</b>	G3V7R4
<b>Immunogen :</b>	The antiserum was produced against synthesized peptide derived from human FKHR around the phosphorylation site of Ser256. AA range:223-272
<b>Specificity :</b>	Phospho-FoxO1 (S256) Polyclonal Antibody detects endogenous levels of FoxO1 protein only when phosphorylated at S256.  Liquid in PBS containing 50% glycerol, 0.5% BSA and 0.02% sodium azide.

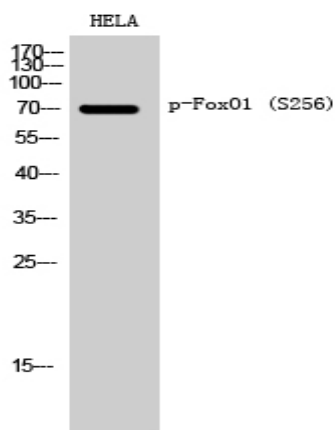
<b>Formulation :</b>	Polyclonal, Rabbit,IgG
<b>Dilution :</b>	WB 1:500 - 1:2000. IHC 1:100 - 1:300. IF 1:200 - 1:1000. ELISA: 1:20000. Not yet tested in other applications.
<b>Purification :</b>	The antibody was affinity-purified from rabbit antiserum by affinity-chromatography using epitope-specific immunogen.
<b>Concentration :</b>	1 mg/ml
<b>Storage Stability :</b>	-15°C to -25°C/1 year(Do not lower than -25°C)
<b>Observed Band :</b>	82kD
<b>Cell Pathway :</b>	Insulin Receptor; B Cell Receptor; Protein_Acetylation
<b>Background :</b>	This gene belongs to the forkhead family of transcription factors which are characterized by a distinct forkhead domain. The specific function of this gene has not yet been determined; however, it may play a role in myogenic growth and differentiation. Translocation of this gene with PAX3 has been associated with alveolar rhabdomyosarcoma. [provided by RefSeq, Jul 2008],
<b>Function :</b>	disease:Chromosomal aberrations involving FOXO1 are a cause of rhabdomyosarcoma 2 (RMS2) [MIM:268220]; also known as alveolar rhabdomyosarcoma. Translocation (2;13)(q35;q14) with PAX3; translocation t(1;13)(p36;q14) with PAX7. The resulting protein is a transcriptional activator.,function:Transcription factor.,PTM:Phosphorylated by AKT1; insulin-induced (By similarity). IGF1 rapidly induces phosphorylation of Ser-256, Thr-24, and Ser-319. Phosphorylation of Ser-256 decreases DNA-binding activity and promotes the phosphorylation of Thr-24, and Ser-319, permitting phosphorylation of Ser-322 and Ser-325, probably by CK1, leading to nuclear exclusion and loss of function. Phosphorylation of Ser-329 is independent of IGF1 and leads to reduced function. Phosphorylated upon DNA damage, probably by ATM or ATR.,similarity:Contains 1 fork-head DNA-binding domain.,subcellular location:Shuttles betw
<b>Subcellular Location :</b>	Cytoplasm . Nucleus . Shuttles between the cytoplasm and nucleus. Largely nuclear in unstimulated cells (PubMed:11311120, PubMed:12228231, PubMed:19221179, PubMed:21245099, PubMed:20543840, PubMed:25009184). In osteoblasts, colocalizes with ATF4 and RUNX2 in the nucleus (By similarity). Serum deprivation increases localization to the nucleus, leading to activate expression of SOX9 and subsequent chondrogenesis (By similarity). Insulin-induced phosphorylation at Ser-256 by PKB/AKT1 leads, via stimulation of Thr-24 phosphorylation, to binding of 14-3-3 proteins and nuclear export to the cytoplasm where it is degraded by the ubiquitin-proteosomal pathway (PubMed:11237865, PubMed:12228231). Phosphorylation at Ser-249 by CDK1 disrupts binding of 14-3-3 proteins and promotes nuclear accumulation

<b>Expression :</b>	Ubiquitous.
<b>Tag :</b>	orthogonal
<b>Sort :</b>	1
<b>No2 :</b>	84192S
<b>No3 :</b>	ab131339
<b>No4 :</b>	1
<b>Host :</b>	Rabbit
<b>Modifications :</b>	Phospho

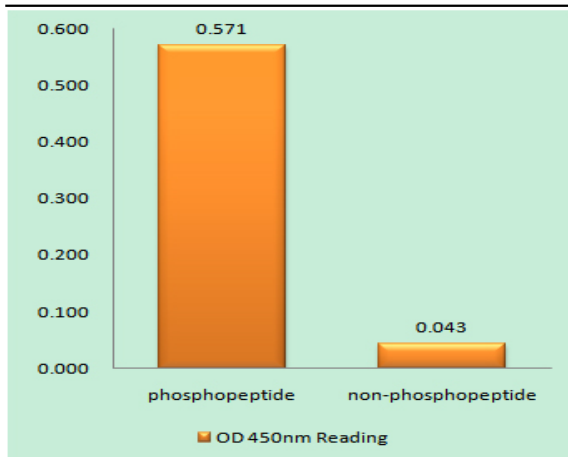
## Products Images



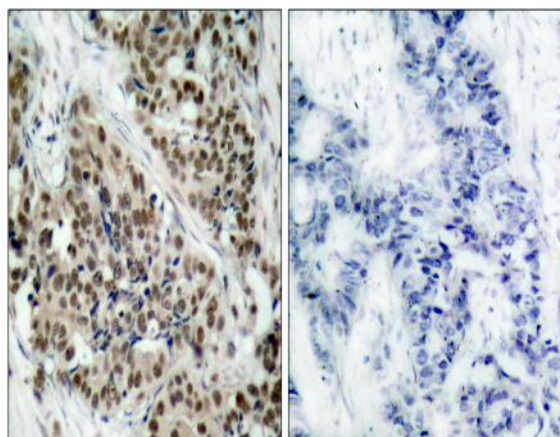
Immunofluorescence analysis of HeLa cell. 1, FoxO1 (phospho Ser256) Polyclonal Antibody (red) was diluted at 1:200 (4° overnight). Active Caspase-3 Monoclonal Antibody (5E1) (green) was diluted at 1:200 (4° overnight). 2, Goat Anti Rabbit Alexa Fluor 594 Catalog:RS3611 was diluted at 1:1000 (room temperature, 50min). Goat Anti Mouse Alexa Fluor 488 Catalog:RS3208 was diluted at 1:1000 (room temperature, 50min).



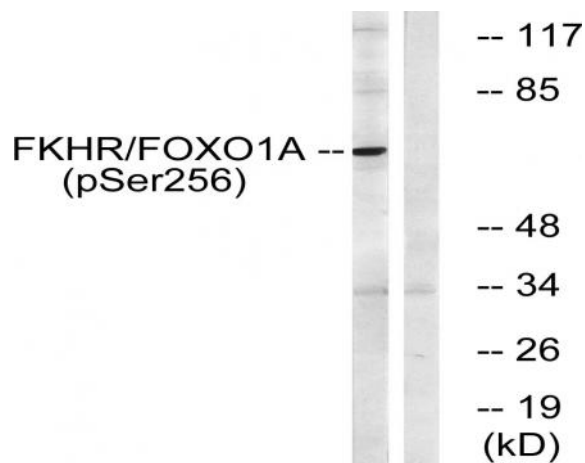
Western Blot analysis of HELA cells using Phospho-FoxO1 (S256) Polyclonal Antibody diluted at 1:1000



Enzyme-Linked Immunosorbent Assay (Phospho-ELISA) for Immunogen Phosphopeptide (Phospho-left) and Non-Phosphopeptide (Phospho-right), using FKHR (Phospho-Ser256) Antibody



Immunohistochemistry analysis of paraffin-embedded human breast carcinoma, using FKHR (Phospho-Ser256) Antibody. The picture on the right is blocked with the phospho peptide.



Western blot analysis of lysates from HeLa cells treated with EGF+Serum, using FKHR (Phospho-Ser256) Antibody. The lane on the right is blocked with the phospho peptide.