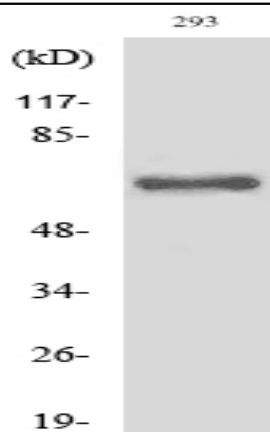


Cleaved-ITI-H2 (D702) Polyclonal Antibody

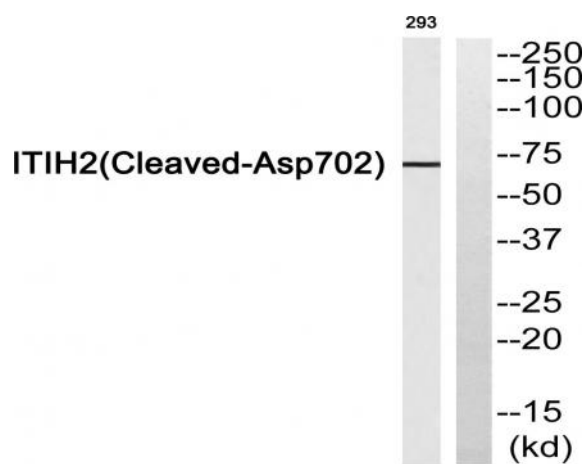
Catalog No :	YC0094
Reactivity :	Human;Rat;Mouse;
Applications :	WB;ELISA
Target :	ITI-H2
Gene Name :	ITIH2
Protein Name :	Inter-alpha-trypsin inhibitor heavy chain H2
Human Gene Id :	3698
Human Swiss Prot No :	P19823
Mouse Swiss Prot No :	Q61703
Immunogen :	The antiserum was produced against synthesized peptide derived from human ITIH2. AA range:653-702
Specificity :	Cleaved-ITI-H2 (D702) Polyclonal Antibody detects endogenous levels of fragment of activated ITI-H2 protein resulting from cleavage adjacent to D702.
Formulation :	Liquid in PBS containing 50% glycerol, 0.5% BSA and 0.02% sodium azide.
Source :	Polyclonal, Rabbit,IgG
Dilution :	WB 1:500 - 1:2000. ELISA: 1:10000. Not yet tested in other applications.
Purification :	The antibody was affinity-purified from rabbit antiserum by affinity-chromatography using epitope-specific immunogen.
Concentration :	1 mg/ml
Storage Stability :	-15°C to -25°C/1 year(Do not lower than -25°C)
Observed Band :	72kD

Background :	The inter-alpha-trypsin inhibitors (ITI) are a family of structurally related plasma serine protease inhibitors involved in extracellular matrix stabilization and in prevention of tumor metastasis. The ITI family contains multiple proteins made up of a light chain (see MIM 176870) and a variable number of heavy chains (Salier et al., 1987 [PubMed 2446322]; Himmelfarb et al., 2004 [PubMed 14744536]).[supplied by OMIM, Nov 2009],
Function :	function:May act as a carrier of hyaluronan in serum or as a binding protein between hyaluronan and other matrix protein, including those on cell surfaces in tissues to regulate the localization, synthesis and degradation of hyaluronan which are essential to cells undergoing biological processes.,mass spectrometry: PubMed:9677337,PTM:Heavy chains are linked to bikunin via chondroitin 4-sulfate esterified to the alpha-carboxyl of the C-terminal aspartate after propeptide cleavage.,similarity:Belongs to the ITIH family.,similarity:Contains 1 VWFA domain.,subunit:I-alpha-I plasma protease inhibitors are assembled from one or two heavy chains (H1, H2 or H3) and one light chain, bikunin. Inter-alpha-inhibitor (I-alpha-I) is composed of H1, H2 and bikunin, inter-alpha-like inhibitor (I-alpha-LI) of H2 and bikunin, and pre-alpha-inhibitor (P-alpha-I) of H3 and bikunin.,
Subcellular Location :	Secreted.
Expression :	Plasma.
Sort :	4223
No4 :	1
Host :	Rabbit
Modifications :	Unmodified

Products Images



Western Blot analysis of various cells using Cleaved-ITI-H2 (D702) Polyclonal Antibody



Western blot analysis of ITIH2 (Cleaved-Asp702) Antibody. The lane on the right is blocked with the ITIH2 (Cleaved-Asp702) peptide.