

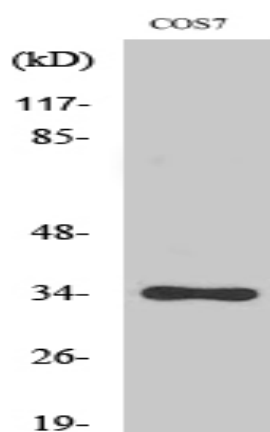
Cdk1/2/3 (phospho Thr14) Polyclonal Antibody

Catalog No :	YP0059
Reactivity :	Human;Mouse;Rat;Monkey
Applications :	WB;IF;ELISA
Target :	CDK1/CDC2
Fields :	>>Cell cycle;>>Oocyte meiosis;>>p53 signaling pathway;>>Cellular senescence;>>Gap junction;>>Progesterone-mediated oocyte maturation;>>Human immunodeficiency virus 1 infection;>>Viral carcinogenesis
Gene Name :	CDK1/CDK2/CDK3
Protein Name :	Cyclin-dependent kinase 1/2/3
Human Gene Id :	1017
Human Swiss Prot No :	P06493/P24941/Q00526
Mouse Gene Id :	12534/12566
Rat Gene Id :	54237
Rat Swiss Prot No :	P39951/Q63699
Immunogen :	The antiserum was produced against synthesized peptide derived from human CDK1/CDC2 around the phosphorylation site of Thr14. AA range:1-50
Specificity :	Phospho-Cdk1/2/3 (T14) Polyclonal Antibody detects endogenous levels of Cdk1/2/3 protein only when phosphorylated at T14.
Formulation :	Liquid in PBS containing 50% glycerol, 0.5% BSA and 0.02% sodium azide.
Source :	Polyclonal, Rabbit,IgG
Dilution :	WB 1:500 - 1:2000. IF 1:200 - 1:1000. ELISA: 1:5000. Not yet tested in other applications.

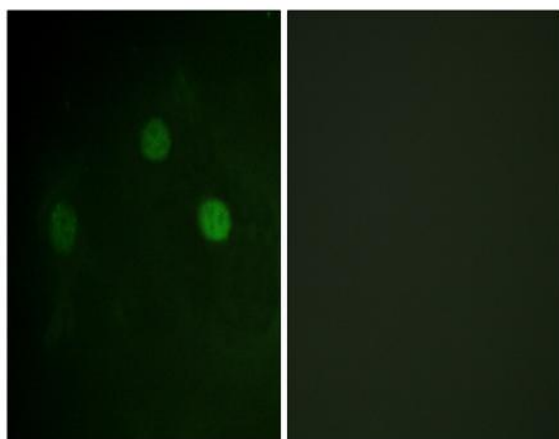
Purification :	The antibody was affinity-purified from rabbit antiserum by affinity-chromatography using epitope-specific immunogen.
Concentration :	1 mg/ml
Storage Stability :	-15°C to -25°C/1 year(Do not lower than -25°C)
Observed Band :	34kD
Cell Pathway :	Cell_Cycle_G1S;Cell_Cycle_G2M_DNA;Oocyte meiosis;p53;Gap junction;Progesterone-mediated oocyte maturation;
Background :	cyclin dependent kinase 1(CDK1) Homo sapiens The protein encoded by this gene is a member of the Ser/Thr protein kinase family. This protein is a catalytic subunit of the highly conserved protein kinase complex known as M-phase promoting factor (MPF), which is essential for G1/S and G2/M phase transitions of eukaryotic cell cycle. Mitotic cyclins stably associate with this protein and function as regulatory subunits. The kinase activity of this protein is controlled by cyclin accumulation and destruction through the cell cycle. The phosphorylation and dephosphorylation of this protein also play important regulatory roles in cell cycle control. Alternatively spliced transcript variants encoding different isoforms have been found for this gene. [provided by RefSeq, Mar 2009],
Function :	catalytic activity:ATP + [DNA-directed RNA polymerase] = ADP + [DNA-directed RNA polymerase] phosphate.,catalytic activity:ATP + a protein = ADP + a phosphoprotein.,enzyme regulation:Phosphorylation at Thr-14 or Tyr-15 inactivates the enzyme, while phosphorylation at Thr-161 activates it.,function:Plays a key role in the control of the eukaryotic cell cycle. It is required in higher cells for entry into S-phase and mitosis. p34 is a component of the kinase complex that phosphorylates the repetitive C-terminus of RNA polymerase II.,similarity:Belongs to the protein kinase superfamily.,similarity:Belongs to the protein kinase superfamily. CMGC Ser/Thr protein kinase family. CDC2/CDKX subfamily.,similarity:Contains 1 protein kinase domain.,subunit:Forms a stable but non-covalent complex with a regulatory subunit and with a cyclin. Interacts with DLGAP5. Isoform 2 is unable to complex with c
Subcellular Location :	Nucleus. Cytoplasm. Mitochondrion . Cytoplasm, cytoskeleton, microtubule organizing center, centrosome . Cytoplasm, cytoskeleton, spindle. Cytoplasmic during the interphase. Colocalizes with SIRT2 on centrosome during prophase and on spindle fibers during metaphase of the mitotic cell cycle. Reversibly translocated from cytoplasm to nucleus when phosphorylated before G2-M transition when associated with cyclin-B1. Accumulates in mitochondria in G2-arrested cells upon DNA-damage.
Expression :	Isoform 2 is found in breast cancer tissues.
Tag :	orthogonal

Sort :	3781
No4 :	1
Host :	Rabbit
Modifications :	Phospho

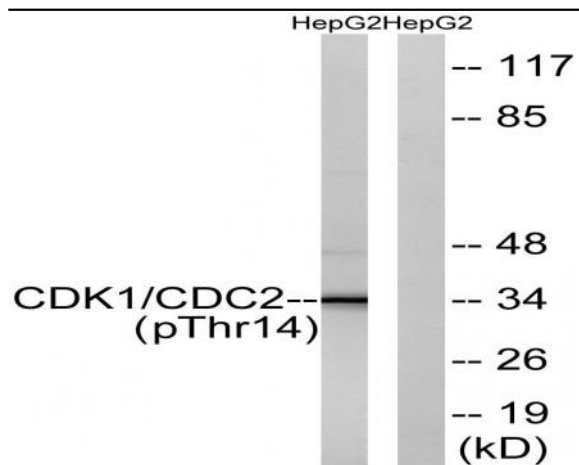
Products Images



Western Blot analysis of COS7 cells using Phospho-Cdk1/2/3 (T14) Polyclonal Antibody diluted at 1:2000



Immunofluorescence analysis of COS7 cells, using CDK1/CDC2 (Phospho-Thr14) Antibody. The picture on the right is blocked with the phospho peptide.



Western blot analysis of lysates from HepG2 cells treated with Forskolin 40nM 30', using CDK1/CDC2 (Phospho-Thr14) Antibody. The lane on the right is blocked with the phospho peptide.