

Cdc2 (phospho Tyr15) Polyclonal Antibody

Catalog No :	YP0054
Reactivity :	Human;Mouse;Rat;Monkey
Applications :	WB;ELISA
Target :	CDK1/CDC2
Fields :	>>Cell cycle;>>Oocyte meiosis;>>p53 signaling pathway;>>Cellular senescence;>>Gap junction;>>Progesterone-mediated oocyte maturation;>>Human immunodeficiency virus 1 infection;>>Viral carcinogenesis
Gene Name :	CDK1
Protein Name :	Cyclin-dependent kinase 1
Human Gene Id :	983
Human Swiss Prot No :	P06493
Mouse Gene Id :	12534
Mouse Swiss Prot No :	P11440
Rat Gene Id :	54237
Rat Swiss Prot No :	P39951
Immunogen :	The antiserum was produced against synthesized peptide derived from human CDC2 around the phosphorylation site of Tyr15. AA range:5-54
Specificity :	Phospho-Cdc2 (Y15) Polyclonal Antibody detects endogenous levels of Cdc2 protein only when phosphorylated at Y15.
Formulation :	Liquid in PBS containing 50% glycerol, 0.5% BSA and 0.02% sodium azide.
Source :	Polyclonal, Rabbit,IgG

Dilution : WB 1:500 - 1:2000. ELISA: 1:10000. Not yet tested in other applications.

Purification : The antibody was affinity-purified from rabbit antiserum by affinity-chromatography using epitope-specific immunogen.

Concentration : 1 mg/ml

Storage Stability : -15°C to -25°C/1 year(Do not lower than -25°C)

Observed Band : 34kD

Cell Pathway : Cell_Cycle_G1S;Cell_Cycle_G2M_DNA;Oocyte meiosis;p53;Gap junction;Progesterone-mediated oocyte maturation;

Background : cyclin dependent kinase 1(CDK1) Homo sapiens The protein encoded by this gene is a member of the Ser/Thr protein kinase family. This protein is a catalytic subunit of the highly conserved protein kinase complex known as M-phase promoting factor (MPF), which is essential for G1/S and G2/M phase transitions of eukaryotic cell cycle. Mitotic cyclins stably associate with this protein and function as regulatory subunits. The kinase activity of this protein is controlled by cyclin accumulation and destruction through the cell cycle. The phosphorylation and dephosphorylation of this protein also play important regulatory roles in cell cycle control. Alternatively spliced transcript variants encoding different isoforms have been found for this gene. [provided by RefSeq, Mar 2009],

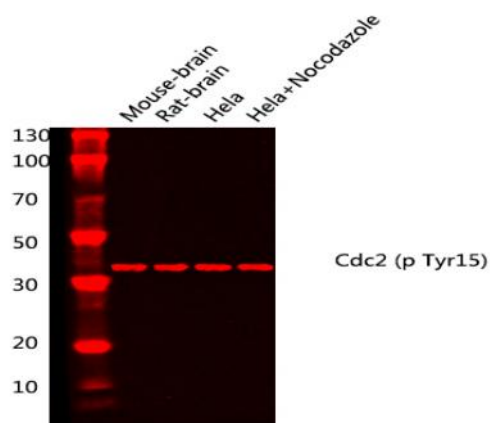
Function : catalytic activity:ATP + [DNA-directed RNA polymerase] = ADP + [DNA-directed RNA polymerase] phosphate.,catalytic activity:ATP + a protein = ADP + a phosphoprotein.,enzyme regulation:Phosphorylation at Thr-14 or Tyr-15 inactivates the enzyme, while phosphorylation at Thr-161 activates it.,function:Plays a key role in the control of the eukaryotic cell cycle. It is required in higher cells for entry into S-phase and mitosis. p34 is a component of the kinase complex that phosphorylates the repetitive C-terminus of RNA polymerase II.,similarity:Belongs to the protein kinase superfamily.,similarity:Belongs to the protein kinase superfamily. CMGC Ser/Thr protein kinase family. CDC2/CDKX subfamily.,similarity:Contains 1 protein kinase domain.,subunit:Forms a stable but non-covalent complex with a regulatory subunit and with a cyclin. Interacts with DLGAP5. Isoform 2 is unable to complex with c

Subcellular Location : Nucleus. Cytoplasm. Mitochondrion . Cytoplasm, cytoskeleton, microtubule organizing center, centrosome . Cytoplasm, cytoskeleton, spindle. Cytoplasmic during the interphase. Colocalizes with SIRT2 on centrosome during prophase and on spindle fibers during metaphase of the mitotic cell cycle. Reversibly translocated from cytoplasm to nucleus when phosphorylated before G2-M transition when associated with cyclin-B1. Accumulates in mitochondria in G2-arrested cells upon DNA-damage.

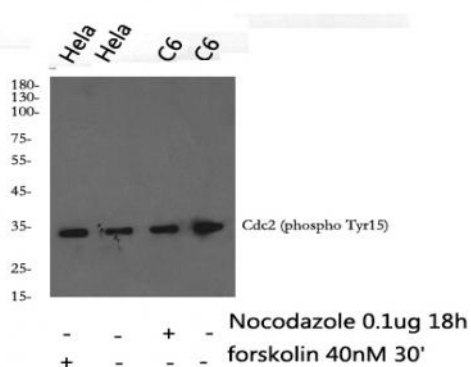
Expression : Isoform 2 is found in breast cancer tissues.

Tag :	hot,orthogonal
Sort :	755
No2 :	4539T
No4 :	1
Host :	Rabbit
Modifications :	Phospho

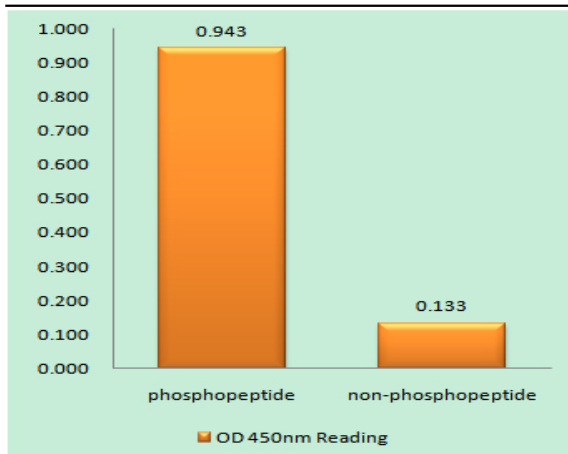
Products Images



Western blot analysis of lysates from Mouse-brain, Rat-brain, HeLa cells treated with nocodazole 1ug/ml 18h, using CDC2 p-Thr15 Antibody. Primary Antibody was diluted at 1:1000 4° over night, secondary antibody(Immunoway cat:RS23710)was diluted at 1:10000, 37° 1hour.



Western blot analysis of Cdc2 (phospho Tyr15) Polyclonal Antibody, using HeLa, C6 cell treated or untreated with forskolin 40nM 30', Nocodazole(Immunoway cat#:MC0250) 0.1ug/ml 18hour, 4° over night, secondary antibody(cat: RS0002) was diluted at 1:10000, 37° 1hour.



Enzyme-Linked Immunosorbent Assay (Phospho-ELISA) for Immunogen Phosphopeptide (Phospho-left) and Non-Phosphopeptide (Phospho-right), using CDC2 (Phospho-Tyr15) Antibody